



| Model      | Output Current | Input Current | Input Power | Output Power Range | PF  | Efficiency | Output Voltage | No load Voltage |
|------------|----------------|---------------|-------------|--------------------|-----|------------|----------------|-----------------|
| RC6W150A9  | 150mA          | 0.05A         | 8.5W        | 4.05-6W            | 0.9 | 81%        | 27-40V         | 55V             |
| RC6W500A9  | 500mA          | 0.05A         | 9W          | 4-6.5W             | 0.9 | 78%        | 8-13V          | 35V             |
| RC10W200A9 | 200mA          | 0.06A         | 11W         | 5.4-8W             | 0.9 | 82%        | 27-40V         | 55V             |
| RC10W250A9 | 250mA          | 0.07A         | 13.5W       | 6.75-10W           | 0.9 | 82%        | 27-40V         | 55V             |
| RC10W300A9 | 300mA          | 0.06A         | 12W         | 5.7-9W             | 0.9 | 82%        | 19-30V         | 45V             |
| RC10W350A9 | 350mA          | 0.07A         | 13.5W       | 6.65-10.5W         | 0.9 | 84%        | 19-30V         | 45V             |
| RC10W400A9 | 400mA          | 0.06A         | 10.5W       | 5.2-8.4W           | 0.9 | 84%        | 13-21V         | 35V             |
| RC10W500A9 | 500mA          | 0.07A         | 13.5W       | 6.5-10.5W          | 0.9 | 84%        | 13-21V         | 35V             |
| RC10W700A9 | 700mA          | 0.06A         | 10W         | 5.6-9.1W           | 0.9 | 80%        | 8-13V          | 35V             |
| RC12W300A9 | 300mA          | 0.08A         | 15.5W       | 8.1-12W            | 0.9 | 83%        | 27-40V         | 55V             |

\* Test result @230V, 50Hz, Full Load.

### 1. Parameters

| Category | Item                      | Technical Norm   |
|----------|---------------------------|--|
| Features | Output Type               | Constant Current   |
|          | IP Grade                  | IP44   |
|          | Insulation Class          | Class II   |
| Input    | Rated Input Voltage       | 220-240VAC   |
|          | Range of Input Voltage    | 198-264VAC or 220-280VDC   |
|          | Frequency                 | 50/60Hz  |
|          | Input Current             | ≤0.08A (230VAC, full load)   |
|          | Input Power               | ≤ 12W (230VAC, full load)  |
|          | Power Factor              | ≥0.9 (230VAC, full load)   |
|          | THD                       | ≤20% (230VAC, full load)   |
|          | No-load Power Consumption | ≤0.5W @230VAC  |
| Output   | Current Accuracy          | ±7%(150mA,200mA,250mA)<br>±5%(300mA,350mA,400mA,450mA,500mA,600mA,650mA,700mA) |
|          | Max. Output Power         | 12W  |
|          | Started Delay Time        | ≤0.5S (230VAC, full load)  |

|              |                           |  |
|--------------|---------------------------|--|
|              | Current Ripple (< 120 Hz) | $\pm 5\%$ (Imax-Imin) / (Imax+Imin)  |
|              | PstLM                     | $\leq 1$   |
|              | SVM                       | $\leq 0.4$   |
| Protection   | Short Circuit Protection  | Auto Recovery  |
|              | Overload Protection       | Auto Recovery  |
|              | No-load Protection        | /  |
|              | Insulation voltage        | 3750V 5mA 60S between P-S  |
|              | Insulation resistance     | >100M ohm @ 500VDC   |
|              | Leakage current           | I/P to O/P < 250 $\mu$ A   |
| Environment  | Ta/Operation Temperature  | -20....+60°C   |
|              | Ts/Storage Temperature    | -30....+85°C   |
|              | Tc/Enclosure Temperature  | 90 °C  |
|              | Humidity                  | 10%....90%RH   |
|              | Atmosphere                | 86-108KPa  |
| Construction | Connection Method         | Direct Lead  |
|              | Installation              | Built-in   |
|              | PRI Wire preparation      | 0.5-1.5 <sup>□</sup>   |
|              | SEC Wire preparation      | 0.5-1.5 <sup>□</sup>   |
|              | Dimension                 | $\Phi 42.5 \times 22.5$ mm (R*H)   |
| Standards    | Certification             | TUV/SAA/CCC/CE/CB  |
|              | Safety Standards          | EN61347-1:2015, EN61347-2-13:2014/A1:2017, EN62493:2015, AS61347.2.13:2018, AS/NZS61347.1:2016 Inc A1          |
|              | EMC Standards             | EN IEC 55015:2019, EN IEC 55015:2019/A11:2019, EN IEC 61000-3-2:2019, EN 61000-3-3:2013/A1:2019, EN61547:2009, |
|              | Performance               | EN62384  |
|              | Surge                     | L-N/2KV  |
|              |                           |  |
| Others       | RoHS                      | complied to 2011/65/EU   |
|              | Life Time                 | 50,000h @Ta=60°C   |
|              | Warranty                  | 5years   |
|              | Noise                     | $\leq 20$ dB @Background noise $\leq 15$ dB , Interval $\geq 20$ cm  |

**Remark**

- All Parameters, if not specified, are measured at 230VAC/50Hz and 25°C ambient temperature.
- LED Driver is a component of the luminaires, Luminaires and wire layout will affect the EMC, please check the EMC with end products again.

**2. Connected quantities of different current Breake**

| TYPE   | RC6W150A9 Connected quantities of different current Breaker |                    |                    |                    |                  |                  | Input Voltage | Inrush Current | Time  |
|--------|---|--------------------|--------------------|--------------------|------------------|------------------|---------------|----------------|-------|
|        | current (A)   | 10                 | 13                 | 16                 | 20               | 25               |               |                |       |
|        | Installation wire diameter                                  | 1.5mm <sup>2</sup> | 2.5mm <sup>2</sup> | 2.5mm <sup>2</sup> | 4mm <sup>2</sup> | 4mm <sup>2</sup> |               |                |       |
| TYPE B |   | 143                | 186                | 229                | 286              | 357              | @230VAC       | 4.2            | 5.8us |
| TYPE C |   | 229                | 297                | 366                | 457              | 571              |               |                |       |
| TYPE D |   | 366                | 475                | 585                | 731              | 914              |               |                |       |

| TYPE   | RC6W500A9 Connected quantities of different current Breaker |                    |                    |                    |                  |                  | Input Voltage | Inrush Current | Time  |
|--------|---|--------------------|--------------------|--------------------|------------------|------------------|---------------|----------------|-------|
|        | current (A)   | 10                 | 13                 | 16                 | 20               | 25               |               |                |       |
|        | Installation wire diameter                                  | 1.5mm <sup>2</sup> | 2.5mm <sup>2</sup> | 2.5mm <sup>2</sup> | 4mm <sup>2</sup> | 4mm <sup>2</sup> |               |                |       |
| TYPE B |   | 130                | 170                | 209                | 261              | 326              | @230VAC       | 4.6            | 7.8us |
| TYPE C |   | 209                | 271                | 334                | 417              | 522              |               |                |       |
| TYPE D |   | 334                | 434                | 534                | 668              | 835              |               |                |       |

| TYPE   | RC10W200A9 Connected quantities of different current Breaker |                    |                    |                    |                  |                  | Input Voltage | Inrush Current | Time  |
|--------|--|--------------------|--------------------|--------------------|------------------|------------------|---------------|----------------|-------|
|        | current (A)  | 10                 | 13                 | 16                 | 20               | 25               |               |                |       |
|        | Installation wire diameter                                   | 1.5mm <sup>2</sup> | 2.5mm <sup>2</sup> | 2.5mm <sup>2</sup> | 4mm <sup>2</sup> | 4mm <sup>2</sup> |               |                |       |
| TYPE B |  | 120                | 156                | 192                | 240              | 300              | @230VAC       | 5              | 3.2us |
| TYPE C |  | 192                | 250                | 307                | 384              | 480              |               |                |       |
| TYPE D |  | 307                | 399                | 492                | 614              | 768              |               |                |       |

| TYPE   | RC10W250A9 Connected quantities of different current Breaker |                    |                    |                    |                  |                  | Input Voltage | Inrush Current | Time  |
|--------|--|--------------------|--------------------|--------------------|------------------|------------------|---------------|----------------|-------|
|        | current (A)  | 10                 | 13                 | 16                 | 20               | 25               |               |                |       |
|        | Installation wire diameter                                   | 1.5mm <sup>2</sup> | 2.5mm <sup>2</sup> | 2.5mm <sup>2</sup> | 4mm <sup>2</sup> | 4mm <sup>2</sup> |               |                |       |
| TYPE B |  | 122                | 159                | 196                | 245              | 306              | @230VAC       | 4.9            | 4.3us |
| TYPE C |  | 196                | 255                | 313                | 392              | 490              |               |                |       |
| TYPE D |  | 313                | 408                | 502                | 627              | 784              |               |                |       |

| TYPE   | RC10W300A9 Connected quantities of different current Breaker |                    |                    |                    |                  |                  | Input Voltage | Inrush Current | Time  |
|--------|--|--------------------|--------------------|--------------------|------------------|------------------|---------------|----------------|-------|
|        | current (A)  | 10                 | 13                 | 16                 | 20               | 25               |               |                |       |
|        | Installation wire diameter                                   | 1.5mm <sup>2</sup> | 2.5mm <sup>2</sup> | 2.5mm <sup>2</sup> | 4mm <sup>2</sup> | 4mm <sup>2</sup> |               |                |       |
| TYPE B |  | 91                 | 118                | 145                | 182              | 227              | @230VAC       | 6.6            | 2.8us |
| TYPE C |  | 145                | 189                | 233                | 291              | 364              |               |                |       |
| TYPE D |  | 233                | 303                | 372                | 465              | 582              |               |                |       |

| TYPE   | RC10W350A9 Connected quantities of different current Breaker |                    |                    |                    |                  |                  | Input Voltage | Inrush Current | Time  |
|--------|--|--------------------|--------------------|--------------------|------------------|------------------|---------------|----------------|-------|
|        | current (A)  | 10                 | 13                 | 16                 | 20               | 25               |               |                |       |
|        | Installation wire diameter                                   | 1.5mm <sup>2</sup> | 2.5mm <sup>2</sup> | 2.5mm <sup>2</sup> | 4mm <sup>2</sup> | 4mm <sup>2</sup> |               |                |       |
| TYPE B |  | 102                | 132                | 163                | 203              | 254              | @230VAC       | 5.9            | 3.8us |
| TYPE C |  | 163                | 212                | 260                | 325              | 407              |               |                |       |
| TYPE D |  | 260                | 338                | 417                | 521              | 651              |               |                |       |

| TYPE   | RC10W400A9 Connected quantities of different current Breaker |                    |                    |                    |                  |                  | Input Voltage | Inrush Current | Time |
|--------|--|--------------------|--------------------|--------------------|------------------|------------------|---------------|----------------|------|
|        | current (A)  | 10                 | 13                 | 16                 | 20               | 25               |               |                |      |
|        | Installation wire diameter                                   | 1.5mm <sup>2</sup> | 2.5mm <sup>2</sup> | 2.5mm <sup>2</sup> | 4mm <sup>2</sup> | 4mm <sup>2</sup> |               |                |      |
| TYPE B | 95   | 124                | 152                | 190                | 238              | @230VAC          | 6.3           | 3.8us          |      |
| TYPE C | 152  | 198                | 244                | 305                | 381              |                  |               |                |      |
| TYPE D | 244  | 317                | 390                | 488                | 610              |                  |               |                |      |

| TYPE   | RC10W500A9 Connected quantities of different current Breaker |                    |                    |                    |                  |                  | Input Voltage | Inrush Current | Time |
|--------|--|--------------------|--------------------|--------------------|------------------|------------------|---------------|----------------|------|
|        | current (A)  | 10                 | 13                 | 16                 | 20               | 25               |               |                |      |
|        | Installation wire diameter                                   | 1.5mm <sup>2</sup> | 2.5mm <sup>2</sup> | 2.5mm <sup>2</sup> | 4mm <sup>2</sup> | 4mm <sup>2</sup> |               |                |      |
| TYPE B | 90   | 116                | 143                | 179                | 224              | @230VAC          | 6.7           | 2.9us          |      |
| TYPE C | 143  | 186                | 229                | 287                | 358              |                  |               |                |      |
| TYPE D | 229  | 298                | 367                | 459                | 573              |                  |               |                |      |

| TYPE   | RC10W700A9 Connected quantities of different current Breaker |                    |                    |                    |                  |                  | Input Voltage | Inrush Current | Time |
|--------|--|--------------------|--------------------|--------------------|------------------|------------------|---------------|----------------|------|
|        | current (A)  | 10                 | 13                 | 16                 | 20               | 25               |               |                |      |
|        | Installation wire diameter                                   | 1.5mm <sup>2</sup> | 2.5mm <sup>2</sup> | 2.5mm <sup>2</sup> | 4mm <sup>2</sup> | 4mm <sup>2</sup> |               |                |      |
| TYPE B | 85   | 110                | 135                | 169                | 211              | @230VAC          | 7.1           | 3.1us          |      |
| TYPE C | 135  | 176                | 216                | 270                | 338              |                  |               |                |      |
| TYPE D | 216  | 281                | 346                | 433                | 541              |                  |               |                |      |

| TYPE   | RC12W300A9 Connected quantities of different current Breaker |                    |                    |                    |                  |                  | Input Voltage | Inrush Current | Time |
|--------|--|--------------------|--------------------|--------------------|------------------|------------------|---------------|----------------|------|
|        | current (A)  | 10                 | 13                 | 16                 | 20               | 25               |               |                |      |
|        | Installation wire diameter                                   | 1.5mm <sup>2</sup> | 2.5mm <sup>2</sup> | 2.5mm <sup>2</sup> | 4mm <sup>2</sup> | 4mm <sup>2</sup> |               |                |      |
| TYPE B | 77   | 100                | 123                | 154                | 192              | @230VAC          | 7.8           | 3.4us          |      |
| TYPE C | 123  | 160                | 197                | 246                | 308              |                  |               |                |      |
| TYPE D | 197  | 256                | 315                | 394                | 492              |                  |               |                |      |

### 3. Label

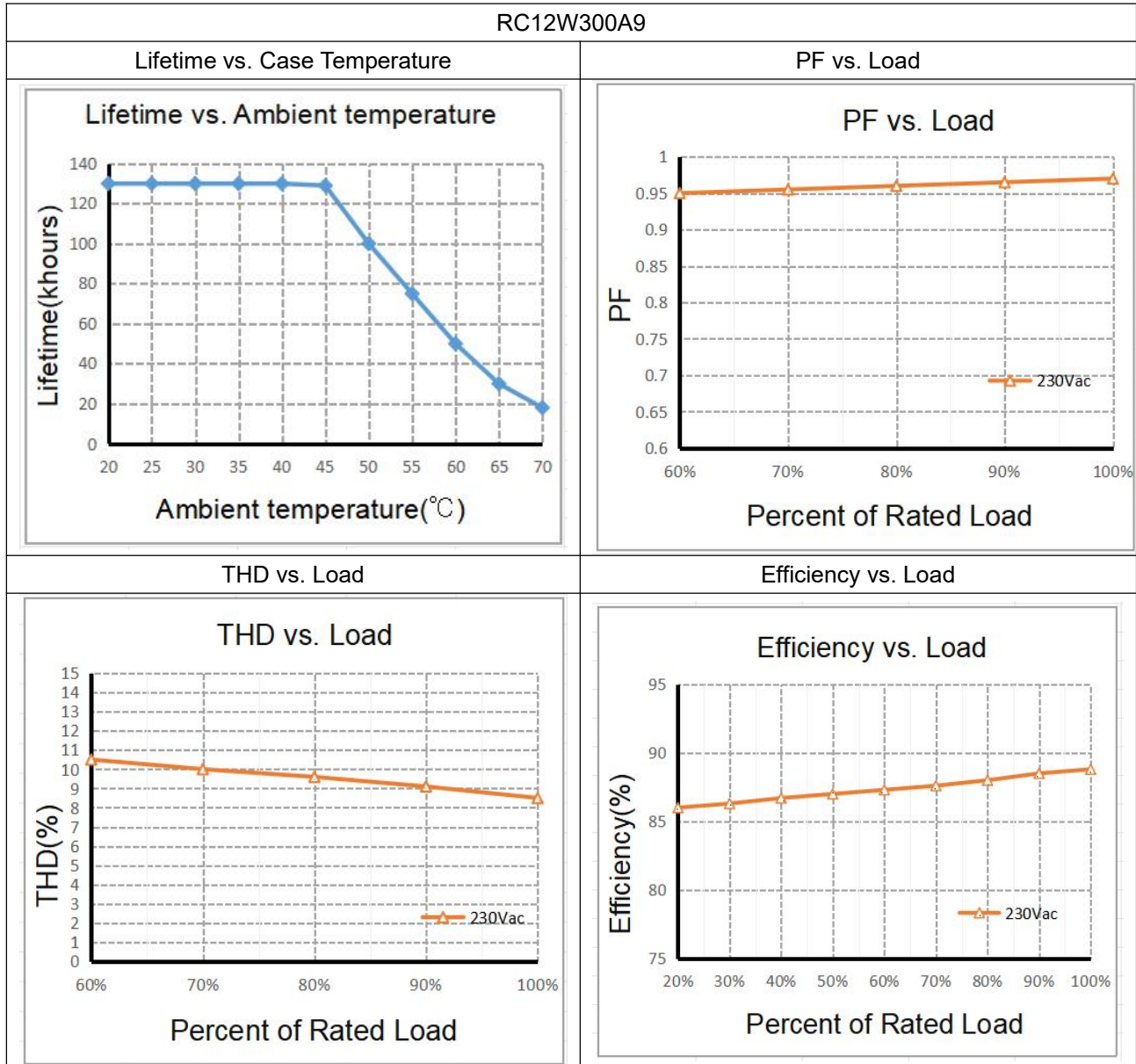




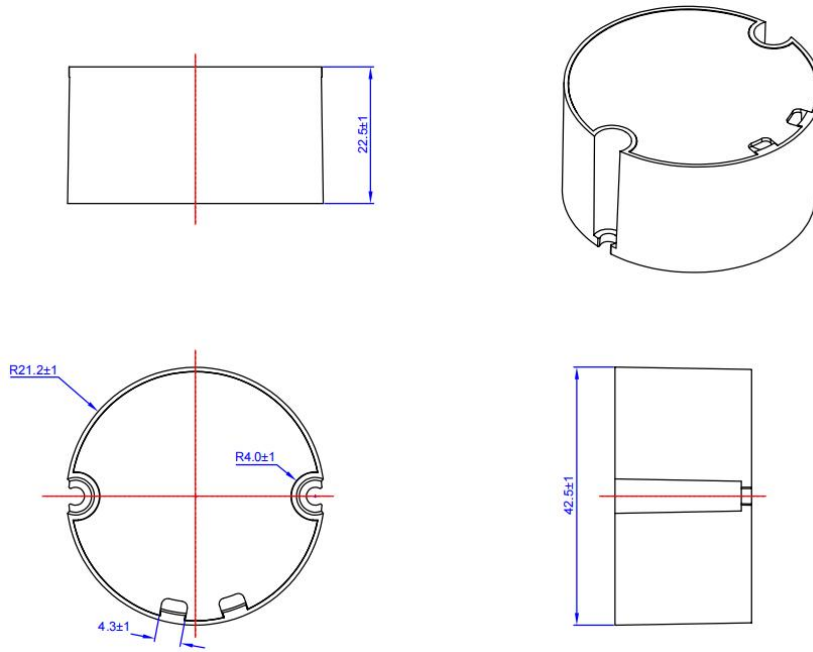
侧面



### 4. Electrical values



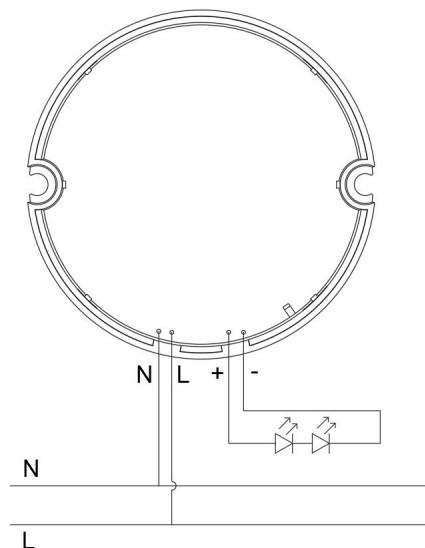
### 5. Dimension (Unit: mm)



### 6. Packing information

| Carton<br>L*W*H(mm) | Pcs/Carton | Net weight/<br>Pcs(kg) | Net weight/<br>Carton(kg) | Gross weight /<br>Carton(kg) |
|---------------------|------------|------------------------|---------------------------|------------------------------|
| 450*240*200         | 150        | 0.058                  | 8.7                       | 11.7                         |

### 7. Wiring Diagram



**8. Wiring instructions**

- All connections must be kept as short as possible to ensure good EMI behaviour
- Mains leads should be kept apart from LED Driver and other leads (ideally 5 – 10 cm distance)
- Advice the maximum length of output wires is 3 m
- Secondary switching is not permitted (Except for constant voltage)
- Incorrect wiring can damage LED modules.
- The wiring must be protected against short circuits to earth (sharp edged metals parts, metal cable clips, louver, etc.)

**9. REVISION HISTORY**

| <b>DATE</b> | <b>VER</b> | <b>REMARK</b>    |
|-------------|------------|------------------|
| 2024-6-18   | V1.0       | Initial release. |
|             |            |                  |
|             |            |                  |
|             |            |                  |
|             |            |                  |
|             |            |                  |
|             |            |                  |
|             |            |                  |