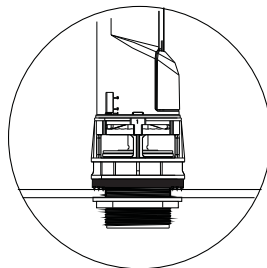
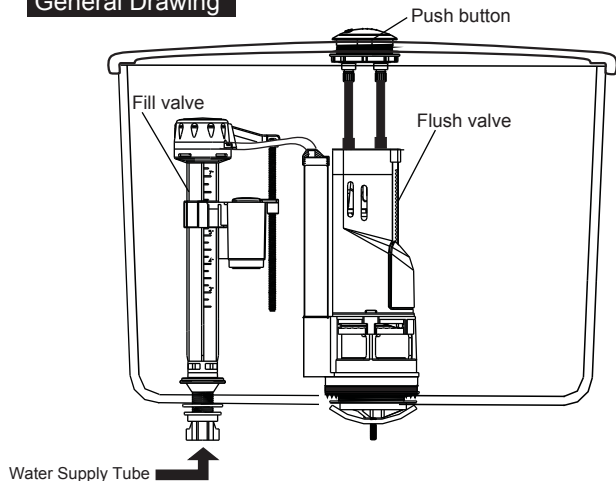


# Installation Manual of Tank Fitting

Please give the manual to the end user. Please read the manual thoroughly before using it.

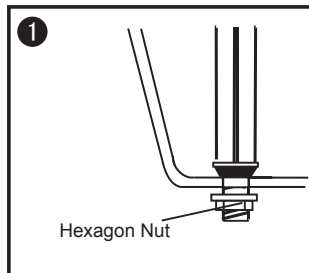
## General Drawing



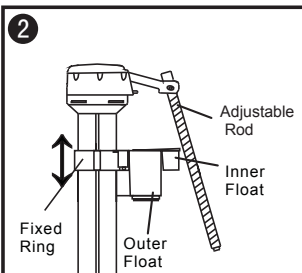
Flush valve can also be used in tow-piece tank.

## The installation Manual

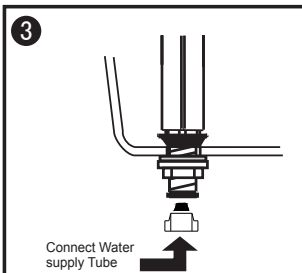
### 1.The Installation of fill Valve



Spin the hexagon nut open and put the fill valve into the water-in tank hole, make sure the filter are at the position as shown, screw the hexagon nut tight.

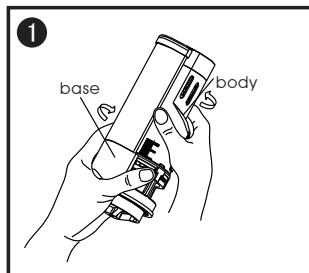


Rotate the adjustable rod 90 degree and draw out, move the fixed ring to adjust the float height and water level. Press the inner float, adjustable rod to the lowest position, put the rod back into the inner float, then rotate and fix it.

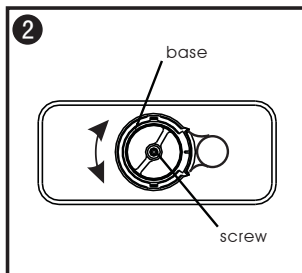


Drain out of the water supply tube clean and connect the water supply tube.

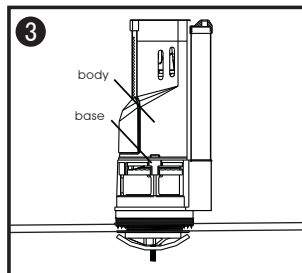
### 2.The Installation of flush valve



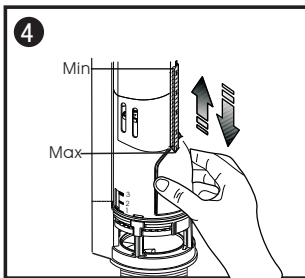
Rotate the flush valve body to separate the body from base as shown in the Fig.



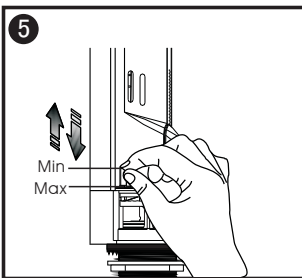
Install the flush valve base into the outlet to make the "U" clasp can clip on the tank properly. Rotate the base to choose proper angle and lock the screw.



Install the flush valve body on the base again, rotate it to a proper position and lock.

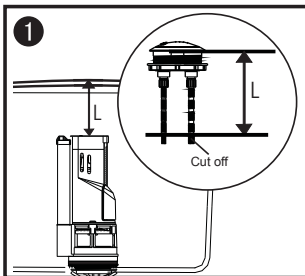


When moving the partial flush float from bottom to top, the partial flush volume decreases gradually. The adjustable distance is 60mm(2-1/4").

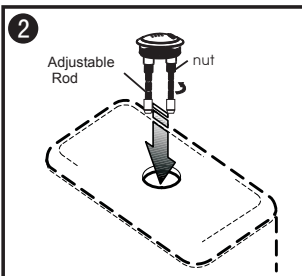


When moving the red adjusting piece from bottom to top, the full flush volume decreases gradually. The adjustable distance is 20mm(13-16").

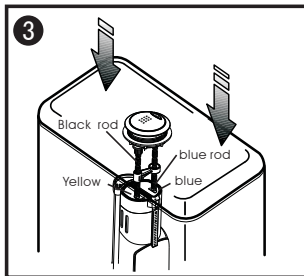
### 3.The Installation of push button



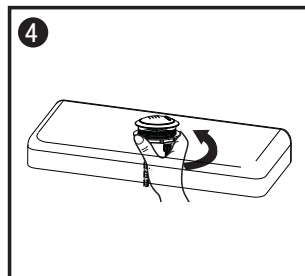
"L" must be measured just as showed in figure. To cut off the excess length of the rod.



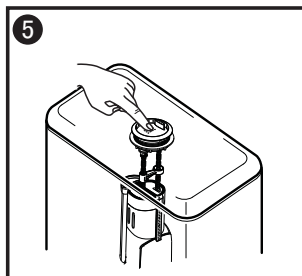
Cut the adjustable rod to a proper length, put the push button into the hole.



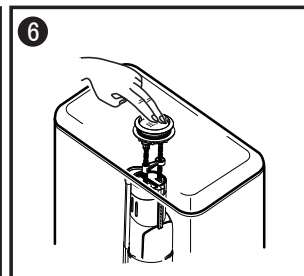
Adjust the direction of the push button.



Tighten the nut.



Whole flush.



Partial flush.

### Fault and Resolvent

Fault	Resolvent
No partial flush	Check the fill water level whether is higher than the partial float. If not, adjust the water level higher or adjust the float lower.
No flush or flush less after push down the button.	<ol style="list-style-type: none"> <li>1.Check the button whether is pushed to the proper position.</li> <li>2.Check the button rod whether is too short. If yes, adjust the adjustment rod's length.</li> </ol>

Note: It is normal that the water flow from the inside of toilet in a moment after flush.

Attention: Please cut down the syphon to suit the overflow level.

#### WARNING:

Do not use an in-tank type bowl cleaner in your toilet. In-tank cleaners containing chlorine(calcium hypochlorite) can seriously damage fittings in the tank. We shall not be responsible for any tank fitting damage caused by the use of cleaners containing chlorine(calcium hypochlorite).

We will not be liable for damages due to improper handling or installation, abuse, or alteration of the product. We disclaims any responsibility for incidental or consequential damages.

Attention: If the product is different from the drawing , Please take the object as right.