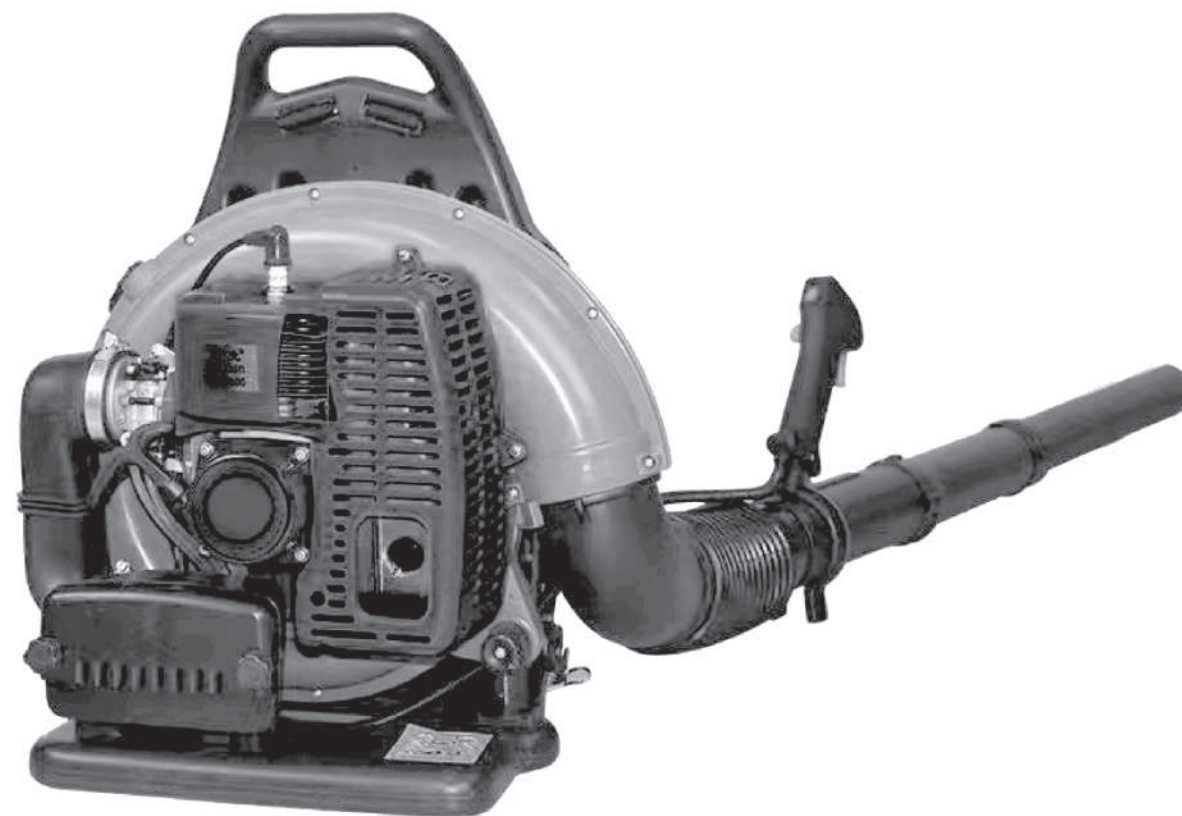


# Power Blower Operator's Manual

MODELS: EB-650/865/975/985



**WARNING**



**DANGER**

Read instructions carefully and follow rules for safe operation,

Failure to do so could result in serious injury.

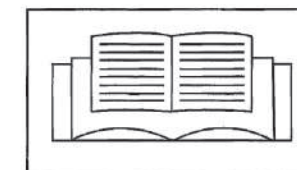


## INTRODUCTION

*The Back-Pack Blower model EB-650 was designed and manufactured to provide long life and on-the-job dependability. Read and understand this manual. You will find it easy to use and full of helpful operating tips and SAFETY messages.*

## THE OPERATOR'S MANUAL--

*contains specifications and information for operation, starting, stopping, maintenance, storage and assembly specific to this product.*



## TABLE OF CONTENTS

introduction.....	2
-The Operator' s Manual.....	2
Safety .....	3
-Decals.....	3
-Internal Symbols.....	4
Safety Instructions.....	4
-Personal Condition and Safety Equipment.....	4
-Equipment.....	5
-Safe Operation.....	5
Assembly.....	6
-Specifications.....	6
-Install Blower Pipes / Stick Handle.....	7
Pre-Operation.....	8
-Fuel.....	8
Operation.....	10
-Starting Cold Engine.....	10
-Starting Warm Engine.....	10
-Stopping Engine.....	11

-Operating Blower.....	11
Maintenance.....	11
-Skill Levels.....	12
-Maintenance Intervals.....	12
-Air Filter.....	13
-Spark Plug.....	13
Troubleshooting.....	13
Storage.....	15

*Specifications, descriptions and illustrative material in this literature are as accurate as known at the time of publication, but are subject to change without notice. Illustrations may include optional equipment and accessories, and may not include all standard equipment.*

## SAFETY DECALS

*Locate these safety decals on your unit. The complete unit Ulus Ira Hon, found in the "DESCRIPTION" section will help you locate them. Make sure the decals are legible and that you understand and follow the instructions on them. If a decal cannot be read, a new one can be ordered from your dealer. See PA - RTS ORDERING instructions for specific information.*

GENERAL WARNING DECAL (located on top of blower housing) HOT DECAL (near muffler)










## The Parts List of FIGURE2

Ser.NO.	Part NO.	Part Name	Qty.	Ser.NO.	Part NO.	Part Name	Qty.	Ser.NO.	Part NO.	Part Name	Qty.	Ser.NO.	Part NO.	Part Name	Qty.
2-1	EB-650.10 (B)	LEFT BAND	1	2-30	GB/T818 M5X20	BOLT	2	2-59	GB/T70.1 M5X35	BOLT	4	2-88	EB-650.7.2(A)-1	HANDLE	1
2-2	EB-650.10 (A)	RIGHT BAND	1	2-31	EB-650.1-4	RIGHT LOOP	1	2-60	EB-650.2.1	IMPELLER	1	2-89	3WF-16.5	EARTH LINE	1
2-3	EB-650-10	SHAFT	2	2-32	EB-650.3.1	FUEL TANK	1	2-61	GB845 ST4.8X16	SCREW	2	2-90	GB/T70.1 M5X30	SCREW	1
2-4	3WF-2.6B-2	BACK CUP	11	2-33	GB6170 M5	NUT	7	2-62	EB-650.2.2-2	LEFT LINK PLATE	1	2-91	GB/T845 ST2.9X18	SCREW	2
2-5	EB-650.11	BACK MAT	1	2-34	1E32FL 6.2-2	LID	1	2-63	EB-65a.2.2-1	RIGHT LINK PLATE	1	2-92	BL750.3-5	RIGHT MANIPULATOR	1
2-6	GB6177.1 M5	NUT	3	2-35	EB-415.41.1-1	AIRVALVE	1	2-64	EB-650.2.2-3	VOLUTE CASE	1	2-93	BL750.3-1	LONG SPRING	1
2-7	EB-650.1-2	FRAME	1	2-36	CG420.1.3.1	SEALING WASHER	1	2-65	EB-650.6	SUPPORT	2	2-94	8I750.3-4	HANDLE	1
2-8	EB-650-11	PROTECT NET	1	2-37	EB-650-CE.1-1	FUEL TANK LID	1	2-66	EB-650-2	BRACKET	1	2-95	BL750.3-3	HANDLE	1
2-9	GB845 ST4.2X14	SCREW	1	2-38	EB-415.4.1	FUEL TANK LID	1	2-67	3WF-20.9-1 M5X10	SCREW	1	2-96	BL750.3-2	SPRING	1
2-10	GB818M5X25	BOLT	7	2-39	EB-650.3-2	VITTA CONVENTION	1	2-68	GB97.1 6	WASHER	6	2-97	BL750.3-8	PIN	1
2-11	GB97.1 5	WASHER	12	2-40	EB-415.4.2-2	VITTAPLUG	1	2-69	GB859 6	WASHER	6	2-98	BL750.3-6	LEFT MANIPULATOR	1
2-12	EB-650-12	PROTECT NET	1	2-41	GB/T13527.1 LS-3	TUBE LS-3X1.5X680	1	2-70	GB70.1 M6X35	BOLT	6	2-99	BL750.3-7	SPRING	1
2-13	EB-650-4	SPNG	1	2-42	GB/T13527.1 LS-2	RUELTUBE LS-2X1.5X800	1	2-71	GB818M5X55	BOLT	2	2-100	BL750.3-9	PUSH BUTTON	1
2-14	GB/T9074.4 M5X30	BOLT	2	2-43	1E34F.9.2-3B	FILTER	1	2-72	GB845ST4.2X8.5	SCREW	2	2-101	GB/T846 ST2.9X13	SCREW	2
2-15	GB859 5	WASHER	4	2-44	EB-650-1	PIPE	1	2-73	EB-650-8 (A)-1	PLATE	1	2-102	3WF-16.3.2-1	TUBE	1
2-16	EB-650.1-1	LEFT LOOP	1	2-45	NO.( $\varnothing$ 46 ~ $\varnothing$ 70)	CLIP	1	2-74	EB-650-8 (A)-2	PLATE	1	2-103	3WF-16.3.2.2	FUEL THROTTLE	1
2-17	EB-6501.1	CONTROL	1	2-46	NO.( $\varnothing$ 32 ~ $\varnothing$ 50)	CLIP	1	2-75	EB450-8	PROTECTION	1	2-104	3WF-16.3.2.1	STOP SWITCH	1
2-18	GB6183 M6	NUT	1	2-47	EB-650.5.2	CLEANERSIDE COVER	1	2-76	3WF-20.9-2 M5X16	SCREW	11	2-105	GB/T899.1 M5	NUT	1
2-19	EB415.22-2	CONTROLLER	1	2-48	EB-650.5.1	PLATE	1	2-77	EB-6507-1	PAN JOINT	1	2-106	3WF-16.3.2	MANIPULATOR ASSEM	1
2-20	EB415.22.1	FRAM ROD	1	2-49	EB-650.5-4	ELEMENT	1	2-78	NO. ( $\varnothing$ 78- $\varnothing$ 101)	CLIP	1	2-107	EB-650.5-3A	ELEMENT	1
2-21	EB-650.4.2	STOP SWITCH	1	2-50	EB-650.5-3	ELEMENT	1	2-79	EB-650.7-2	HOSE	1	2-108	3WF-3C.1.2-3	PLASTIC CLIP	1
2-22	EB-415.22-1	SWITCH	1	2-51	EB-650.5-2	FRAM	1	2-80	NO. ( $\varnothing$ 59 ~ $\varnothing$ 82)	CLIP	1	2-109	3WF-3C.1.2-2	CHAIN	1
2-23	EB-650-3	PIN	1	2-52	EB-650.5-1	CLEANER OUTSIDE COVER	1	2-81	EB-650.7.1	PIPE	1	2-110	GBT 848 ST4.8X25	SCREW	2
2-24	EB-650.4.1	FUEL THROTTLE	1	2-53	EB-650.5.3	SCREW	2	2-82	GB62M6	NUT	1				
2-25	GB9074.4 M6X35	SCREW	1	2-54	GB9074.4 M5X14	SCREW	4	2-83	EB-650.7.2-1	HANDLE	1				
2-26	EB-650.4.1	TUBE	1	2-55	EB-650.8	RUBBER PILLAR	1	2-84	GB5783 M6X45	SCREW BOLT	1				
2-27	BC415-1	WIPE CLAMP BAND	1	2-56	EB-650.9	SAFETY BELT	1	2-85	EB-650.7-3	PIPE	1				
2-28	GB818M5X16	BOLT	9	2-57	EB-650.2.3	VOLUTE CASE	1	2-86	EB-6507-4	PIPE	1				
2-29	GB98 5	WASHER	20	2-58	EB-650.2-1	PLUG	1	2-87	EB-650.7-4(A)	PIPE	1				

## INTERNATIONAL SYMBOLS

Symbol Form/shape					
Symbol description/application	Read and understand Operator's Manual	Wear eyes, ears and head protection	Hot Surface	Safety/Alert	Finger Severing

## SAFETY INSTRUCTIONS

### PERSONAL CONDITION AND SAFETY EQUIPMENT

WARNING  DANGER

Power Blower users risk injury to themselves and others if the power blower is used improperly and or safety precautions are not followed. Proper clothing and safety gear must be worn when operating a blower.

**physical condition--**

Your judgment and physical dexterity may not be good ;  
if you are tired or sick,  
if you are taking medication,  
if you have Men alcohol or drugs.

Operate unit only if you are physically and mentally well

### Eye Protection--

Wear eye protection that meets ANS/Z87.1 or CE requirement's whenever you operate the blower.

## Hand Protection--

Wear no-slip, heavy duty work gloves to improve your grip on the blower handle. Gloves also reduce the transmission of machine vibration to your hands.

### Breathing Protection--

Wear a face mask to protect against dust.

**Hearing Protection--**

We recommend wearing hearing protection whenever unit is used.



## Proper Clothing--

Wear snug fitting durable clothing;

Pants should have long legs, shirts with long sleeves.

DONOTWEARSHORTS,

DONOTWEARTIES,SCARVES,JEWELRY.

Wear sturdy work shoes with nonskid soles;

DONOTWEAROPEN-TOEDSHOES,

DONOTOPERATEUNITBAREFOOTED.

Keep long hair away from engine and blower intake. Tie hair with cap or net.

## Hot Humid Weather--

Heavy protective clothing can increase operator fatigue which may lead to heat stroke. Schedule heavy work for early morning or late afternoon hours when temperatures are cooler.

## EQUIPMENT

Before operation a complete check of the unit must be performed:

Check unit for loose/missing nuts, bolts and screws. Tighten and/or replace as needed.

Inspect fuel lines, tank and area around carburetor for fuel leaks. DO NOT operate unit if leaks are found.

Keep exhaust area clear of flammable debris. Avoid contact during and immediately after operation



## SAFE OPERATION

### Determine Operation Area--

Review area to be cleared. Look for potential hazards such as stones or metal objects.

Spectators and fellow workers must be warned, and children and animals prevented from coming nearer than 15m while the blower is in use.

Take wind conditions into account. Avoid open doors and windows.

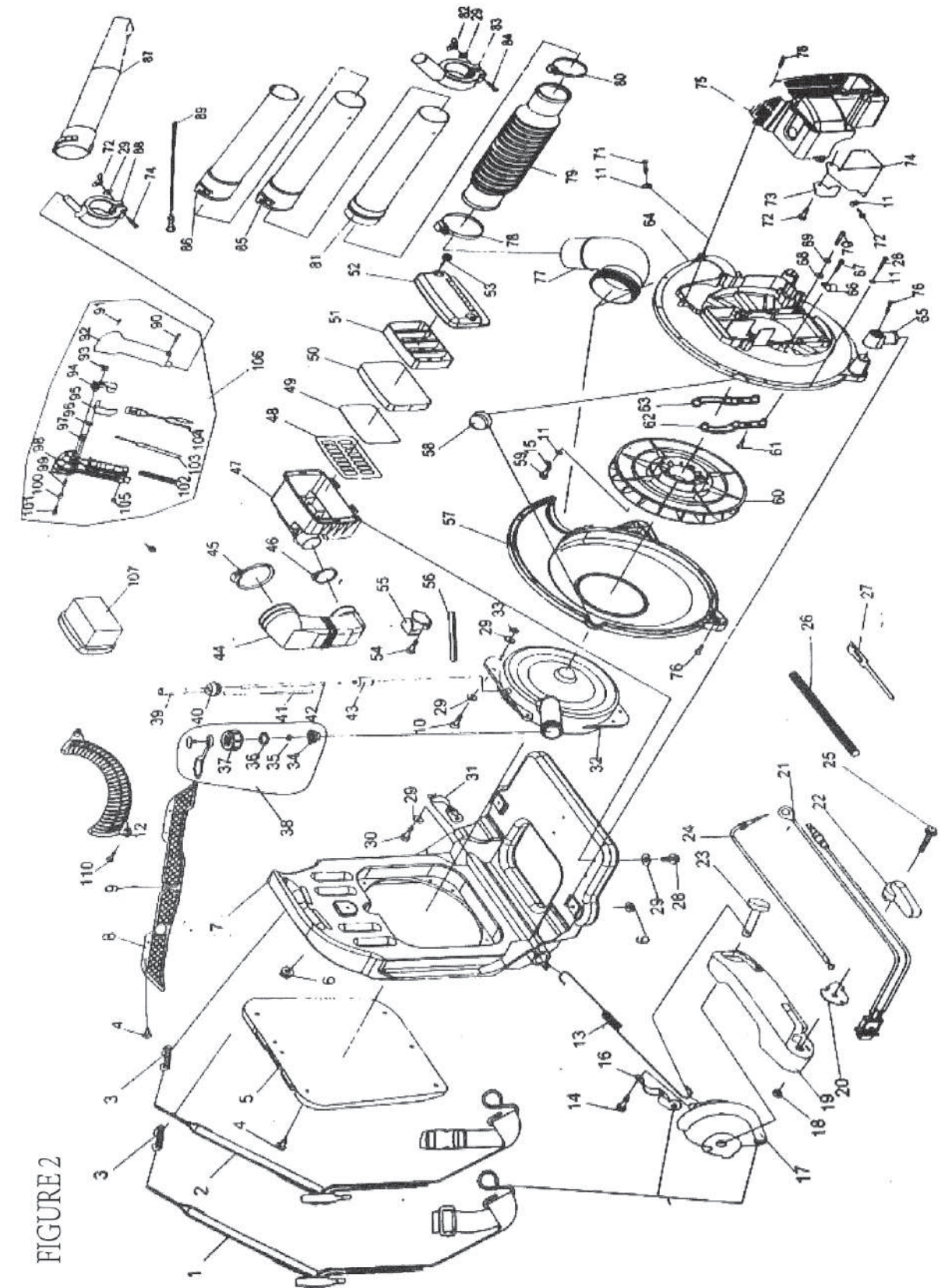


FIGURE 2



附图1 零部件清单 (1E48FP) Appendix List of Attached Fig.1(1E48FP)

序号 Ser.NO.	代号 Part NO.	名称 Part Name	数量 Qty.	序号 Ser.NO.	代号 Part NO.	名称 Part Name	数量 Qty.	序号 Ser.NO.	代号 Part NO.	名称 Part Name	数量 Qty.
1-1	GB/F70.1 M5X16	螺栓 BOLT	5	1-30	GB/T9074.4 M5X20	螺栓 BOLT	5	1-59	1E48FP-3-2	阻风门 CHOKER	1
1-2	GB93 5	垫圈 WASHER	13	1-31	1E46FP-2	定子盖板 RETAINER	1	1-60	1E48FP-3-1	空滤器连接罩 COVER	1
1-3	GB97.1 5	垫圈 WASHER	3	1-32	1E48FP-4.1	停车线 STOP WIRE	1	1-61	1E48FP-7	化油器垫 SEALING GASKET	1
1-4	1E48FP-1	消音器 MUFFLER	1	1-33	GB1099 3X13	半圆键 KEY	1	1-62	1E48FP-3-3	阻风门手柄 HANDLE	1
1-5	1E48FP-1	消音器垫 MUFFLER GASKET	1	1-34	1E48FP-5.1	曲轴连杆组 CRANKSHAFT	1	1-63	GB845 ST2.9X8.5	自攻螺钉 SCREW	1
1-6	GB97.1 6	垫圈 WASHER	2	1-35	1E48FP-5-1	止推垫圈 WASHER	2	1-64	1E48FP-2	化油器 CARBURATOR	1
1-7	GB93 6	垫圈 WASHER	2	1-36	1E46FP-6-2	小头零件轴承 BEARING	1	1-65	1E48FP-6	进气管垫 SEALING GASKET	1
1-8	GB/T70.1 M6X20-10.9	螺栓 BOLT	2	1-37	1E40F-03.02.01	活塞销轴环 RING	2	1-66	GB/T70.1 M5X30	螺钉 SCREW	2
1-9	GB848 5	垫圈 WASHER	11	1-38	1E48FP-5-2	活塞销 PISTON PIN	1	1-67	1E48FP-5	进气管 PIPE	1
1-10	GB/T70.1 M5X20	螺栓 BOLT	4	1-39	1E4SFP-5-5	活塞 PISTON	1	1-68	1E48FP-4	进气口垫 (二) GASKET	1
1-11	1E48FP-1-1	高压帽 CAP	1	1-40	1E48FP-5-4	第二道活塞环 PISTON RING	1	1-69	1E48FP-9	导风板 GUIDE AIR PLATE	1
1-12	1E40F-3A.8-2	火花塞卡簧 SPRING	1	1-41	1E48FP-5-3	第一道活塞环 PISTON RING	1	1-70	GB/T9074.4 M5X10	螺钉 SCREW	2
1-13	L4RTC	火花塞 PLUG	1	1-42	1E48FP-10	缸垫 GASKET	1	1-71	1E48FP-3	进气口垫 (一) GASKET	1
1-14	1E48FP-2	缸体 CYLINDER	1	1-43	1E48FP-6-3	后半曲轴箱 BACK CRANKCASE	1				
1-15	GB6171 M10X1.25	螺母 NUT	1	1-44	1E40FP-3Z-19	启动拨盘 RATCHET	1				
1-16	GB93 10	垫圈 WASHER	1	1-45	1E40FP-3Z-16	螺母 NUT	1				
1-17	GB97.1 10	垫圈 WASHER	2	1-46	GB67 M5X12	螺钉 SCREW	1				
1-18	1E48FP-1.1	磁电机转子 ROTOR	1	1-47	1E40FP-3Z.4-4	垫圈 WASHER	1				
1-19	1E40FP-3Z-11	小油封 SEAL	2	1-48	1E40FP-3Z.4-5	导向片 GUIDE SLICE	1				
1-20	GBH70.1 M5X35	螺栓 BOLT	4	1-49	GB860 8	垫圈 WASHER	1				
1-21	1E48FP-6-1	前半曲轴箱 FRONT CRANKCASE	1	1-50	1E40FP-3Z.4-8	启动轮 START WHEEL	1				
1-22	GB119 B4X10	销 PIN	2	1-51	1E40FP-3Z.4-9	拉绳 ROPE	1				
1-23	GB/T276 6302/P5	轴承 BEARING	2	1-52	1E40FP-3Z.4-6	启动滑轮 PULLEY	1				
1-24	1E48FP-6-2	曲轴箱衬垫 GASKET	1	1-53	1E40FP-3Z.4-7	平衡弹簧 SPRING	1				
1-25	1E46FP-1.1	磁电机定子 ROTOR	1	1-54	1E40FP-3Z.4-1	启动弹簧壳 CASE	1				
1-26				1-55	1E40FP-3Z.4-2	启动把手 HANDLE	1				
1-27				1-56	1E40FP-3Z.4-10	垫圈 PACK	1				
1-28	GB/T9074.13M4X20	螺栓 BOLT	2	1-57	GB/T70.1 M5X50	螺钉 SCREW	1				
1-29	1E46FP-1-3	高压线绝缘 GROMMET	1	1-58	1E48FP-8	挡油板 BAFFLE	1				

Provide all operators of this equipment with the Operator's Manual and instructions for safe operation.

Do not point blower at people or animals.

Start unit on ground with throttle at idle. Check that blower pipe is not blocked by the ground or by any objects.

**WARNING**  **DANGER**

Do not operate this product indoors or in inadequately ventilated areas. Engine exhaust contains poisonous emissions and can cause serious injury or death

#### Keep A Firm Grip

Hold handle with fingers together encircling the handle.

#### Keep A Solid Stance

Maintain footing and balance at all times. Do not stand on slippery, uneven or unstable surfaces. Do not work in odd positions or on ladders.

Do not perform Maintenance or Assembly procedures with engine running.

#### Noise Control

Follow local noise regulations on sound levels and hours of operations. Use only during appropriate hours.

Never use a higher speed setting than necessary to perform a task. The higher the engine speed the louder the blower noise.

Be a good neighbor.

#### Avoid Hot Surfaces

During operation, the muffler or catalytic muffler and surrounding cover may become extremely hot. Avoid contact during and immediately after operation. Always keep exhaust area clear of flammable debris. Allow the engine and muffler to completely cool before performing any maintenance activity.



## ASSEMBLY SPECIFICATIONS



MODLE	EB-650
Length	465mm
Width	365mm
Height	525mm
Weight	11kg
Engine Type	Air cooled, two-stroke, single cylinder gasoline engine
Carburetor	Walbro Diaphragm, modle WYK w/primer bulb
Lgnition System	Flywheel Magneto, capacitor discharge ignition type
Spark plug	L 4R TC Gap (0.6~0.7) mm
Exhaust System	Spark Arrestor Muffler
Fuel	Mixed (Gasoline and Two-stroke Oil)
Oil	30 : 1 High Performance, two-s troke air cooled engine oil
Idle Speed	(2250-2750) rpm
Wide Open Throttle Speed	≥6800rpm
Displacement	63.3cc(3.68 cu.in)
Bore	48.0mm(1.89in)
Stroke	35.0mm (1.38in.)

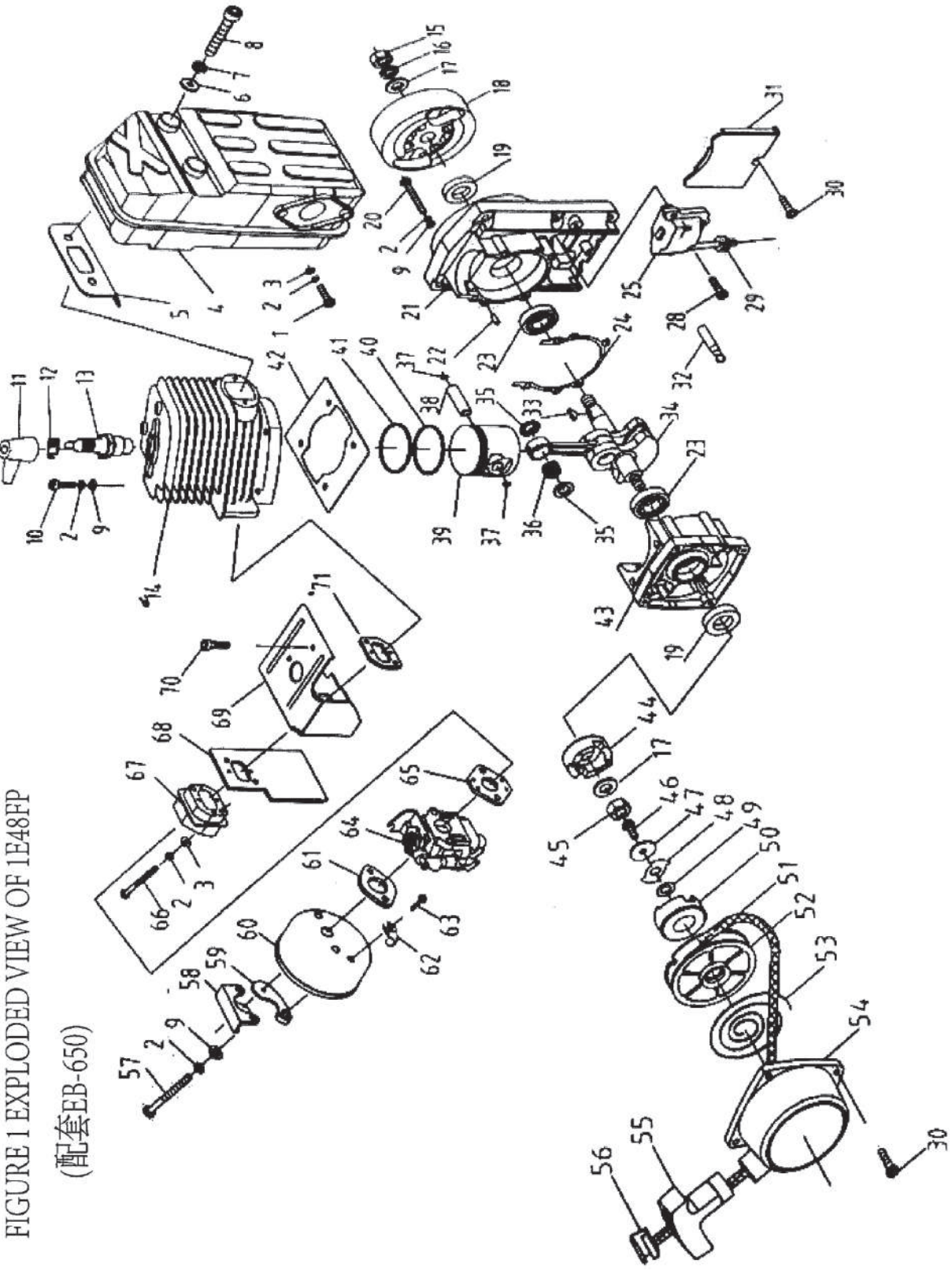
# **WARNING** **DANGER**

Never perform maintenance assembly procedures with engine running or serious personal injury may result.

## **INSTALL BLOWER PIPES/STICK HANDLE**

1. Assemble straight pipe with swivel (D) into flexible pipe (C).
2. Assemble flexible pipe (C) to elbow (A) on blower.
3. Assemble dumps (B) onto both ends of flexible pipe (C) and tighten
4. Loosen wing nut (J) completely and expand open, stick handle clamp (J)
5. Align notches (H) .n handle clamp with pipe pegs (G) . stick handle should be angled away from operator.
6. Slide stick handle onto pipe with swivel (D).

附图1 1E48FP 爆炸图  
FIGURE 1 EXPLODED VIEW OF 1E48FP  
(配套EB-650)





## STORAGE

### WARNING DANGER

During operation the muffler or catalytic muffler and surrounding cover become hot. Always keep exhaust area clear of flammable debris during transportation or when storing, otherwise serious property damage or personal injury may result.

### Long Term Storage (Over 30 Days)

Do not store your unit for a prolonged period of time (30 days or longer) without performing protective storage maintenance which includes the following:

1. Store unit in a dry, dust free place, out of the reach of children.

### WARNING DANGER

Do not store in enclosure where fuel fumes may accumulate or reach an open flame or spark.

2. Place the stop switch (A) in the "STOP" position.

3. Remove accumulation of grease, oil, dirt and debris from exterior of unit.

4. Perform all periodic lubrication and services that are required.

5. Tighten all screws and nuts.

6. Drain the fuel tank completely and pull the recoil starter handle several times to remove fuel from the carburetor.

7. Remove the spark plug and pour 7cc (1/4 oz, 1/2 tablespoon) of fresh, clean 2-stroke engine oil into the cylinder through the spark plug hole.

A. Place a clean cloth over the spark plug hole.

B. Pull the recoil starter handle 2-3 times to distribute the oil inside the engine.

C. Observe the piston location through the spark plug hole. Pull the recoil handle slowly until the piston reaches the top of its travel and leave it there.

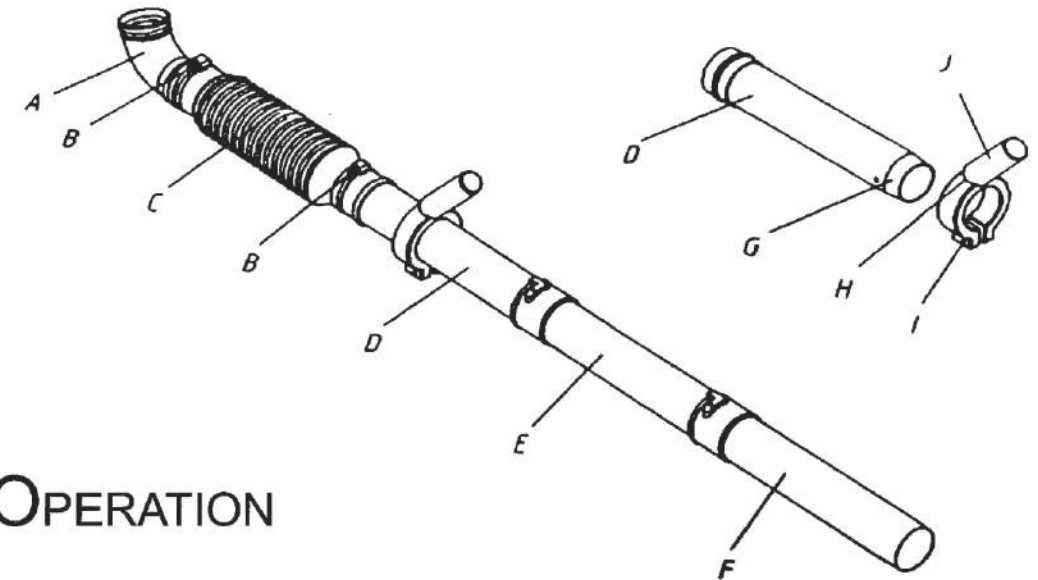
8. Install the spark plug (do not connect ignition cable).

9. Remove blower pipe assembly from unit.

7. Position stick handle for comfortable operation and tighten wing nut (I).

8. Assemble straight pipe (E) to pipe with swivel (D), turning straight pipe counter-clockwise to lock in place.

9. Assemble straight pipe (F) to straight pipe (E) turning straight pipe (F) counter-clockwise to lock in place.



## PRE-OPERATION

### FUEL

#### Fuel Requirements

Use only fresh, clean fuel

Mix all fuels with premium 2-cycle engine oil at a gasoline/oil ratio of 30 : 1

#### Mixing Instructions

1. Fill an approved fuel container with half of the required amount of gasoline.
2. Add 2-stroke oil to gasoline.
3. Close container and shake to mix oil with gasoline.
4. Add remaining gasoline and remix.
5. Install fuel container cap and wipe any spilled fuel from container and surrounding area.

### Handling Fuel



## WARNING DANGER

Fuel is VERY flammable. Use extreme care when mixing, storing or handling or serious personal injury may result.

Use an approved fuel container.

DO NOT smoke near fuel.

DO NOT allow flames or sparks near fuel.

Fuel tanks/cans may be under pressure. Always loosen fuel caps slowly allowing pressure to equalize.

NEVER refuel a unit when the engine is HOT.

NEVER refuel a unit with the engine running.

DO NOT fill fuel tanks indoors. ALWAYS fill fuel tanks outdoors over bare ground.

Securely tighten fuel cap after refueling.

Inspect for fuel leakage. If fuel leakage is found, do not start or operate unit until leakage is repaired.

### IMPORTANT

Spilled fuel is a leading cause of hydrocarbon emissions. Some states may require the use of automatic fuel shut-off containers to reduce fuel spillage. Contact your dealer for ordering information.

### After Refueling-

Wipe any spilled fuel from the unit.

Move at least 3m from refueling location before starting.

### After use-

DO NOT store a unit with fuel in its tank. Leaks can occur.

Return unused fuel to an approved fuel storage container.

### Storage-

Fuel storage laws vary by locality. Contact your local government for the laws affecting your area. As a precaution, store fuel in an approved, air tight container. Store in a well ventilated, unoccupied building, away from sparks and flames. Do not store fuel longer than 30 days.

Problem			Cause	Remedy
<i>Engine-starts hard</i> <i>Engine-does not start</i>				
Engine Cranks	Fuel at carburetor	No fuel at carburetor	Fuel strainer clogged Fuel Une clogged Carburetor	Clean Clean See your dealer
	Fuel at cylinder	No fuel at cylinder	Carburetor	See your dealer
		Muffler wet with fuel	Fuel Mixture is too rich	Open choke Clean/replace air filter Adjust carburetor See your dealer
	Spark at end of plug wire	No spark at end of plug wire	Stop switch off Electrical problem Interlock switch	Turn switch on See your dealer See your dealer
	Spark at plug	No spark at plug	Spark gap incorrect Co vered with carbon Fouled with fuel Spark plug defective	Adjust 0.65mm Clean or replace Clean or replace Replace plug
Engine does not crank			Internal engine problem	See your dealer
Engine runs	Dies or accelerates poorly		Air filter dirty Fuel filter dirty Fuel vent plugged Spark plug Carburetor Cooling sys fem plugged Exhaust porf/spark arrestor screen plugged	Clean or replace Replace Replace Clean and adjust/replace Adjust Clean Clean
Engine runs properly	Blower does not work, is weak or une ven		Blower Pipe clogged, loose or damaged	Unclog Tighten Replace



## AIR FILTER

1. Close choke (Cold Start Position). This prevents dirt from entering the carburetor throat when the air filter is removed.

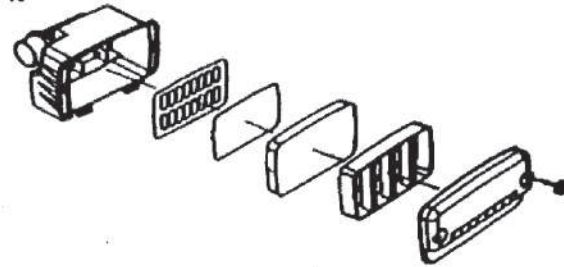
Brush accumulated dirt from the air cleaner area.

2. Remove the air cleaner cover. Clean and inspect the element for damage. If element is fuel soaked and very dirty, replace.

3. If element can be cleaned and reused, be certain it

-still fits the cavity in the air cleaner cover.

-is installed with the original side out.



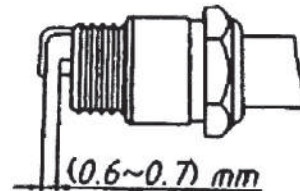
## SPARKPLUG

1. Remove spark plug and check for fouling, worn and rounded center electrode.

2. Clean the plug or replace with a new one. DO NOT sand blast to clean. Remaining sand will damage engine.

3. Adjust spark plug gap by bending outer electrode.

4. Tighten spark plug to (145-155) kg/cm.



## TROUBLESHOOTING

### WARNING ! DANGER

Fuel vapors are extremely flammable and/or explosion. Never test for ignition spark near an open spark plug opening, otherwise serious personal injury may result.

### IMPORTANT

Stored fuel ages. Do not mix more fuel than you expect to use in thirty days, ninety days when a fuel stabilizer is added.

Stored two-stroke fuel may separate. ALWAYS shake fuel container thoroughly before each use.

## OPERATION

Recoil starter: Use short pulls-only 1/2-2/3 of rope length for starting. Do not allow the rope to snap back in. Always hold the unit firmly.

Rotate spring loaded throttle handle downward to a comfortable operating position.

### STARTING COLD ENGINE

1. Move throttle lever (A) to START/IDLE DETENT position.

2. Close Choke-Cold Start.

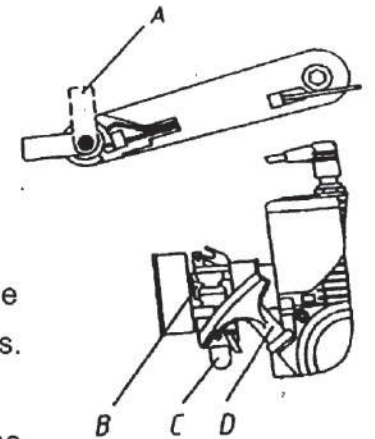
Move choke (B) up to 'Cold Start' position.

3. Primer Bulb-Prime.

Pump primer bulb (C) until fuel is visible and flows freely in the clear fuel tank return line. Pump bulb an additional 4 or 5 times.

4. Pull recoil starter handle (D) until engine fires (5 or 6 pulls)

5. Move choke (B) to run position and if necessary restart engine.



### NOTE

If engine does not start after 5 pulls use cold start procedures.

### NOTE

Allow engine to warm up before use.

### STARTING WARM ENGINE

1. Move throttle lever (A) to start/idle detent position.

2. Pull recoil starter handle (D) and engine should start. Do not use choke (B).

### NOTE

If engine does not start after 5 pulls, use cold start procedures.



STOPPING ENGINE

- 1.Move the throttle lever (E) to the idling position and press the stop switch until the engine comes to a complete stop.



OPERATING BLOWER

WARNING

DANGER

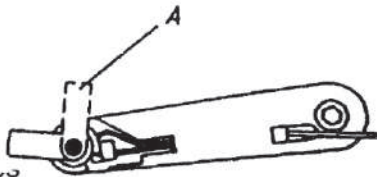
Always wear safety glasses, hearing protection, a face shield mask and take all safety precautions or serious personal injury may result. Do not point the blower pipe in the direction of people or pets.

Read the Safety Section on pages 3 and 6 carefully.

IMPORTANT

To avoid engine damage due to over revving, do not block blower pipe opening.

- 1.Use only during appropriate hours.
- 2.Allow the engine to warm up at a fast idle for a few minutes,
- 3.Set engine speed with throttle lever (A).
- 4.Use lower speed to blow dry leaves from walks, patios and driveways.
- 5.Additional speed may be necessary to clean grass and leaves from a lawn or flower bed.
- 6.Higher speed may be necessary to move gravel, dirt, snow, bottles or cans from a driveway, street, parking lot or stadium.



NOTE

Never use a higher speed setting than necessary to perform a task. Remember, the higher the engine speed the louder the blower noise. Minimize dust by using blower at lower speeds and by dampening material with water/mist when necessary. Keep debris on your property. Be Smart-be a good neighbor.

MAINTENANCE

Your blower is designed to provide many hours of trouble free service. Regular scheduled maintenance will help your blower achieve that goal. If you are unsure or are not equipped with the necessary tools, you may want to take your unit to an Service Dealer for maintenance. To help you decide whether you want to DO-IT- YOURSELF or have the Dealer do it, each maintenance task has been graded. If task is not listed, see your Dealer for repairs.

SKILL LEVEL

- Level1=Easy to do. Most required tools come with unit.
- Level2=Moderate difficulty. Some specialized tools may be required.
- Level3=Experience required, Specialized tools are required. we recommend the unit be returned to your Dealer for servicing.

MAINTENANCE INTERVALS

Component/System	Maintenance Procedure	Before Use	Every Refuel	Daily Every 4 Hours	3 Months or 90 Hours	6 Months or 270 Hours	Yearly
Air Filter	Inspect/Replace	I/C		I/C		R*	
Fuel Strainer	Inspect/Replace				I		R
Fuel Line	Inspect/Replace	I	I				R*
Carburetor	Inspect/Replace					I (1)	R (1)
Choke System	Inspect/Replace		I				
Cooling System	Inspect/Clean	I/C		I/C			
Cylinder Exhaust Port	Inspect/Clean/Decarbon				I/C		
Muffler Spark Arrestor	Inspect/Clean/Replace				I*		R*
Recoil Rope	Inspect/Clean	I					I*
Fuel Leaks	Inspect /Repair	I					I
Spark Plug	Clean/Replace				I/C*	R	
Ignition System	Clean/Replace	No Maintenance required for coil and flywheel					
Screws/Nuts/Bolts	Inspect/Tighten/Replace	I*					

I=Inspect, C=Clean R=Replace

IMPORTANT

Time Intervals shown are maximum. Actual use and your experience will determine the frequency of required maintenance,

All recommendations to replace are based on finding damaged or wear during inspection.

(1) Replacement will be required for Commercial use after 600 hours. For Consumer use, cleaning every 6 months is required.

Cleaning includes rebuild kits.