

PRODUCT SELECTION REPORT

Model: ABK120
Name: Stainless Steel Centrifugal
Pump



LEO GROUP PUMP CO.,LTD.

2024.9.30

Project Name: m

Personal Name: m
Company Address:

Company Name:

Website: www.leopump.com
Company Name:

Product Model: ABK120
LEO GROUP PUMP CO., LTD.

Product Recommendations

Power(kW): 0.9 Flow(m³/h): 12
Head(m): 10

Based on provided information and product parameters, LEO PUMP recommends model:
ABK120

Introduce

Application

Can be used to transfer liquids with light corrosive, requirement for health and containing impurities, etc. Suitable for industrial & domestic sewage system, food & beverage processing, farming, pumping water from river and lake, etc. Can be used at full head without overloading motor.

Pump

AISI 304 pump body;
AISI 304 shaft;
Liquid temperature: -15°C - +80°C;
Liquid PH value: 5 - 9;
Max. solid diameter: 19 mm;

Motor

IE2 motor;
Low noise & Long life bearing;
Motor with copper winding;
Built-in thermal protector for single phase motor;
Insulation class: F;
Protection class: IPX4;
Max. ambient temperature: +40°C.

Product Parameters

Nameplate

Pump flow rate(m³/h): 12 Total manometric head H(m): 10
Speed(rpm): 2900

Technical

Motor power(kW): 0.9 Pump power input(kW): 0.9

Curve tolerance: GB/T 3216 Appendix A
 Maximum use flow(m³/h): 18

Maximum lift(m): 13
 Impeller diameter(mm): 103

Material

Impeller: 06Cr19Ni10
 bracket: ZL102
 Chassis: ADC12
 Back cover: 06Cr19Ni10
 Fan2: PP-GF15
 Supporting foot: PA6-GF25

Pump body: 06Cr19Ni10
 Fan cover: PP-GF10
 Mechanical seal: 06Cr19Ni10
 Rear end cover: ZL102
 Cover box: PC/ABS

Working conditions

Max. ambient temperature(°C): 40 Max. liquid temperature(°C): 80
 Pumped medium:
 Water or other liquids similar to water in physical and chemical properties. Not flammable and explosive, low viscosity, do not contain solid particles or fibers.

Installation

Pipe Diameter(mm): 40×40
 Connection standard: Threaded connection

Motor

Motor phase: Three phase Protection class: IP×4
 Motor poles: 2 Insulation class: F
 Motor power(kW) : 0.9 Frequency(Hz): 50
 Rated voltage(V): 380 Rated current(A): 2.7
 Drive end bearing: 6302 Non-drive end bearing: 6202
 Starting current(A): 15

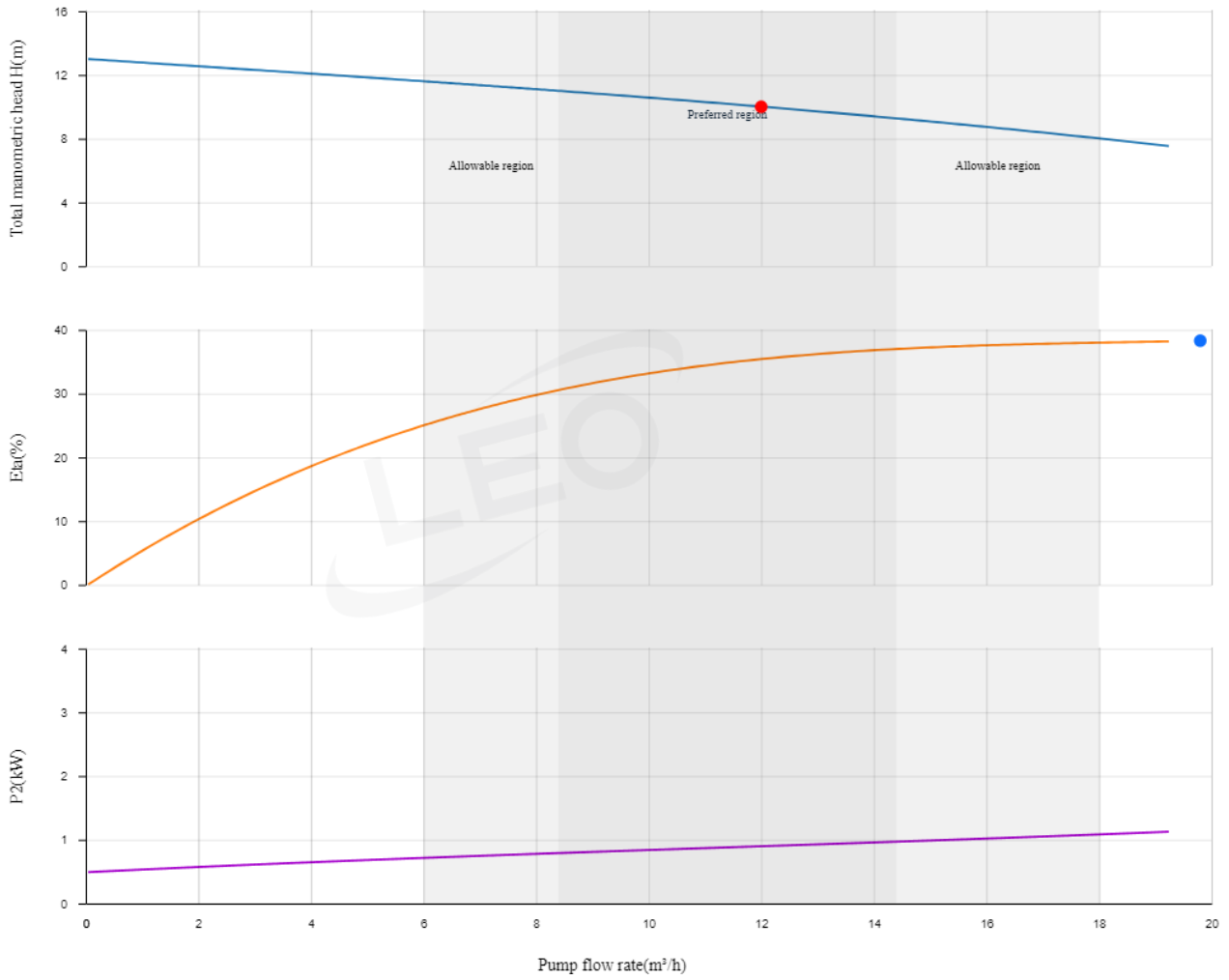
Weight/Packaging

Gross weight(kg): 10.7 Package size(mm): 360*200*250

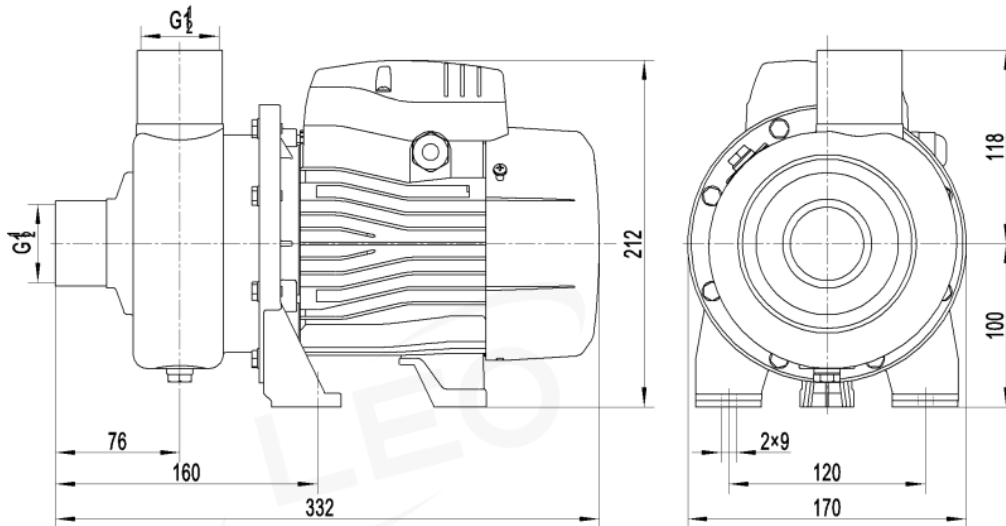
Area Range Parameters

Max Q(m³/h): Allowable Minimum (m³/h): 6
 Allowable Maximum (m³/h): 18 Min Value Optimal area (m³/h): 8.4
 Max Value Optimal area (m³/h): 14.4

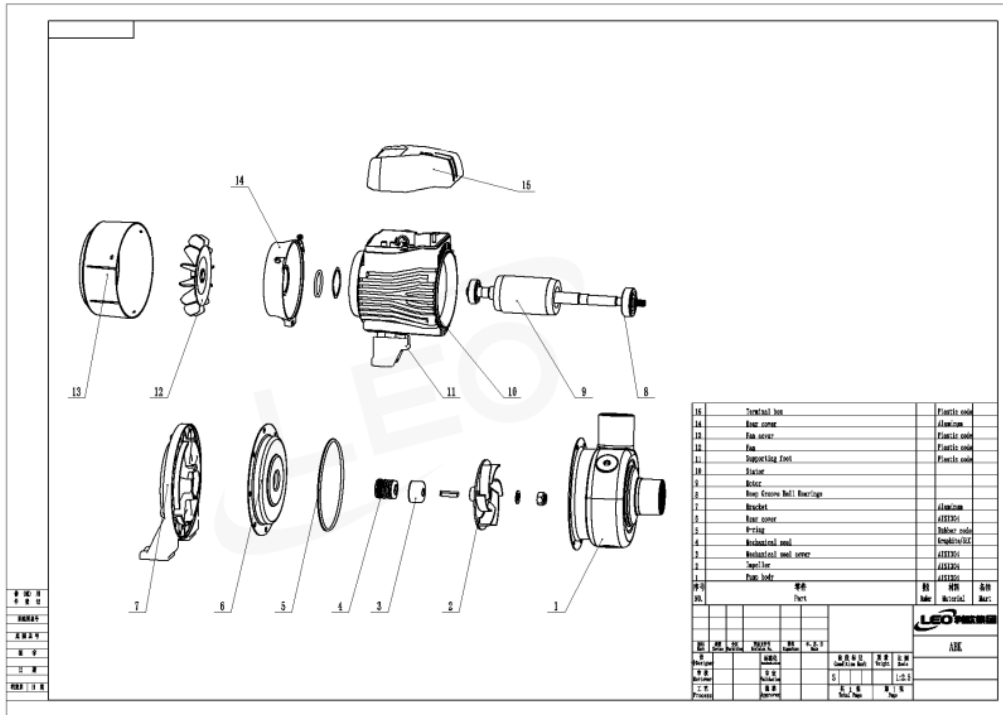
Performance Curve



Shape & Size



Exploded View





LEO PUMP GROUP CO.,LTD.

📍 Headquarter Address:
No.505,23rd Street,Qiantang District,Hangzhou,Zhejiang,310020, P.R.China

Base Address:
No.1,3rd Street,East Industry Center, Wenling,Zhejiang,317511,P.R.China
No.9 Jiu Hua Road,Jiu Hua Eco-Tec Development Area,Yuhu District,Xiangtan,Hunan,411202,P.R.China
No.19 Changshun Road,Changcheng Street,Lushunkou District,Dalian,Liaoning,116049,P.R.China

🌐 www.leopump.com ✉ export@leopump.com

☎ +86-576-8998 6556 📞 +86-576-8998 9898

* LEO reserves all the right of products modification without prior notification



Exploring More by Scanning!