

210x140mm

MULTI FUNCTION TRICYCLE

Contact us

Manufacturer : Zhongshan POVA Baby Products Co.,Ltd  
AD.: No.83 Tongxing West Road,Dongsheng Town,Zhongshan City,  
Guangdong,China 528400  
PIC : Catherine Chen  
Tel.: 0086-13450995214  
E-mail : sales01@zsjoiner.com

CONTENT

PRODUCTS CHARACTER..... 2

MAIN PART LIST..... 3

ASSEMBLY PROCESS.....4-5

SAFETY BELT AND BRAKE PADEL USING PROCESS..... 6

DISASSEMBLY PROCESS..... 7

FOLDING PROCESS..... 8

WARNING..... 9

CARE AND MAINTENANCE..... 10

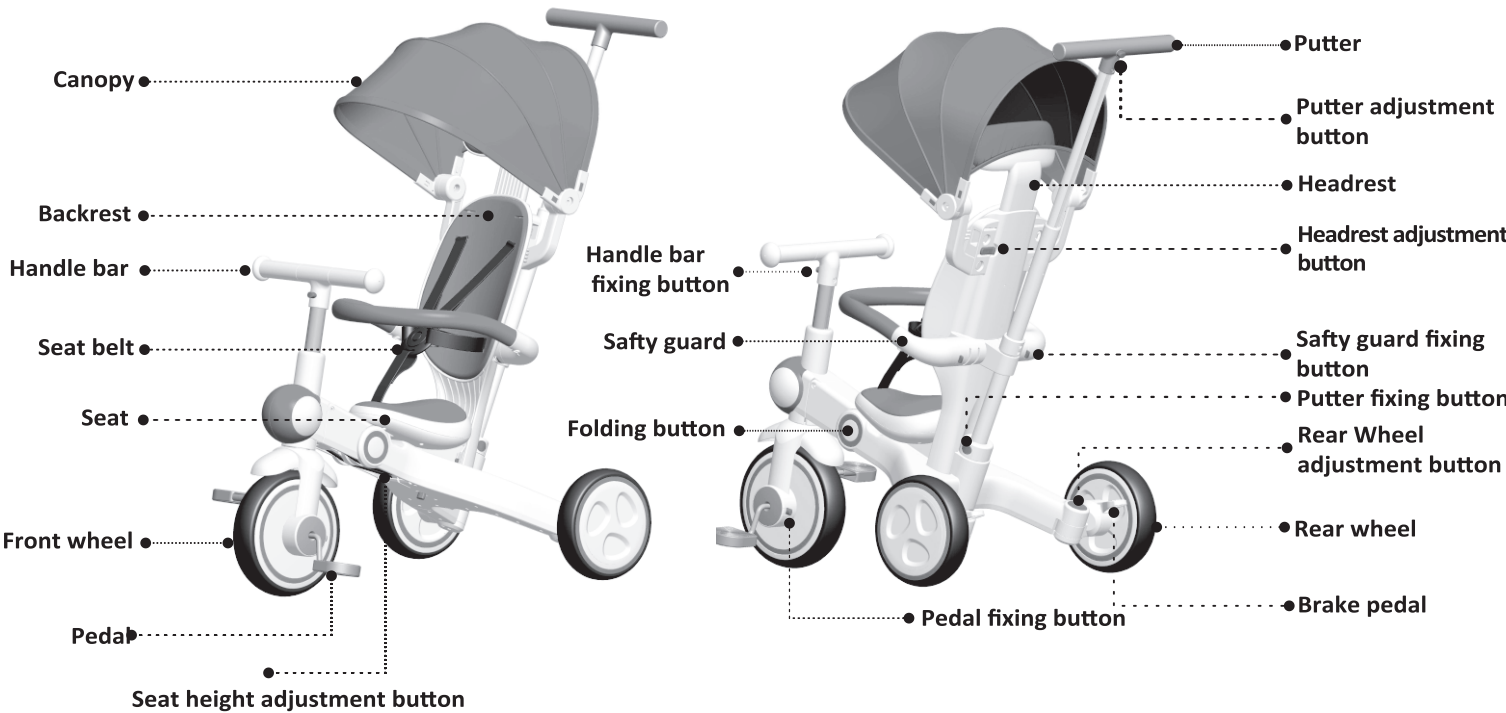
INSTRUCTION MANUAL

MODEL: A7



Before use, users and guardians should carefully read this manual and keep it for future reference. Failure to follow this manual may affect children's safety.

PRODUCTS CHARACTER



Special statement: The illustrations used in this specification are to illustrate the structure and operation of the product. Method, when there is a small difference between the physical object and the illustration, please take the physical object as the standard.

01

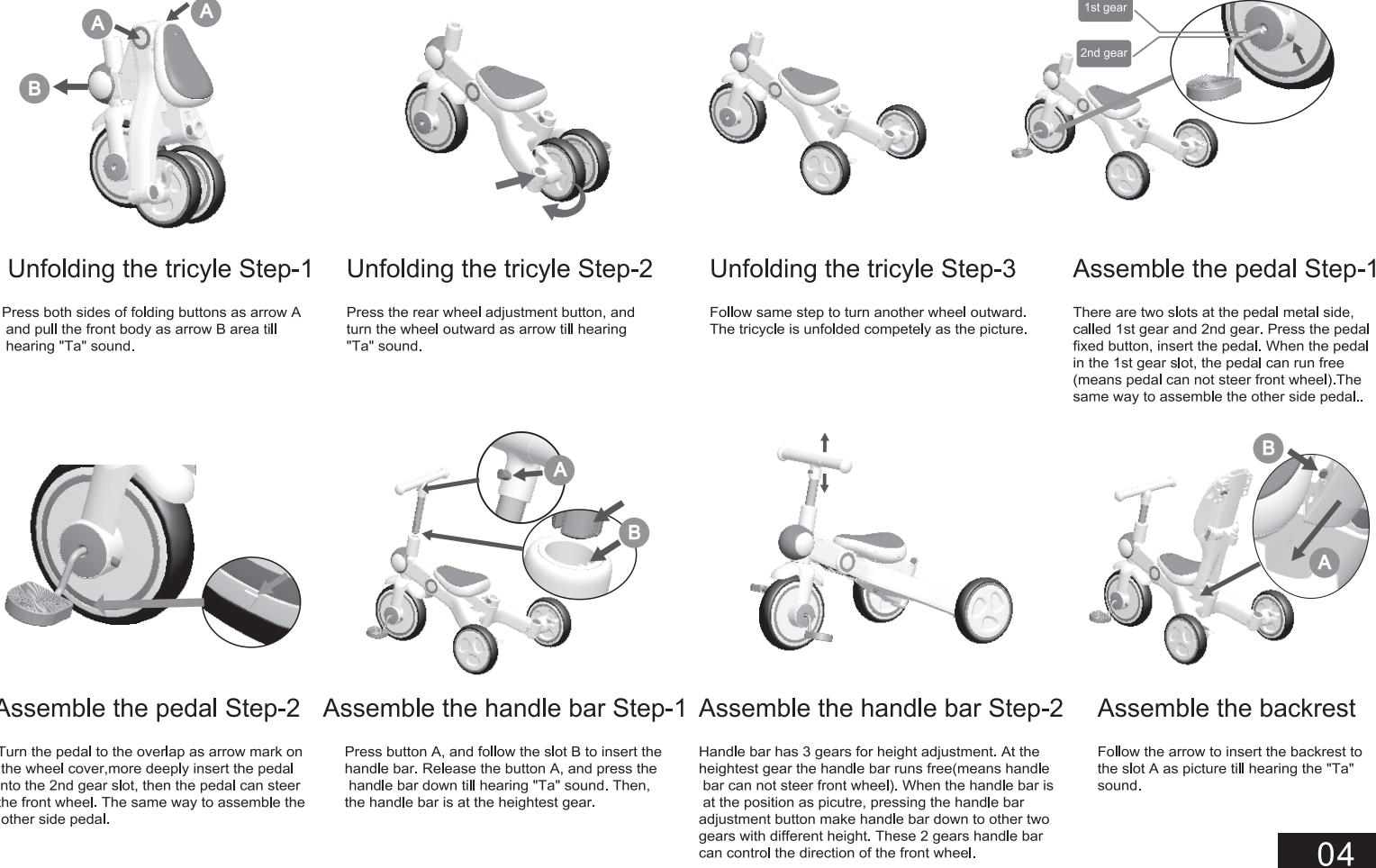
MAIN PART LIST

1. Main boby
2. Putter
3. Handle bar
4. Canopy
5. Headrest
6. Backrest
7. Safety guard
8. Pedal
9. Pedal adapter



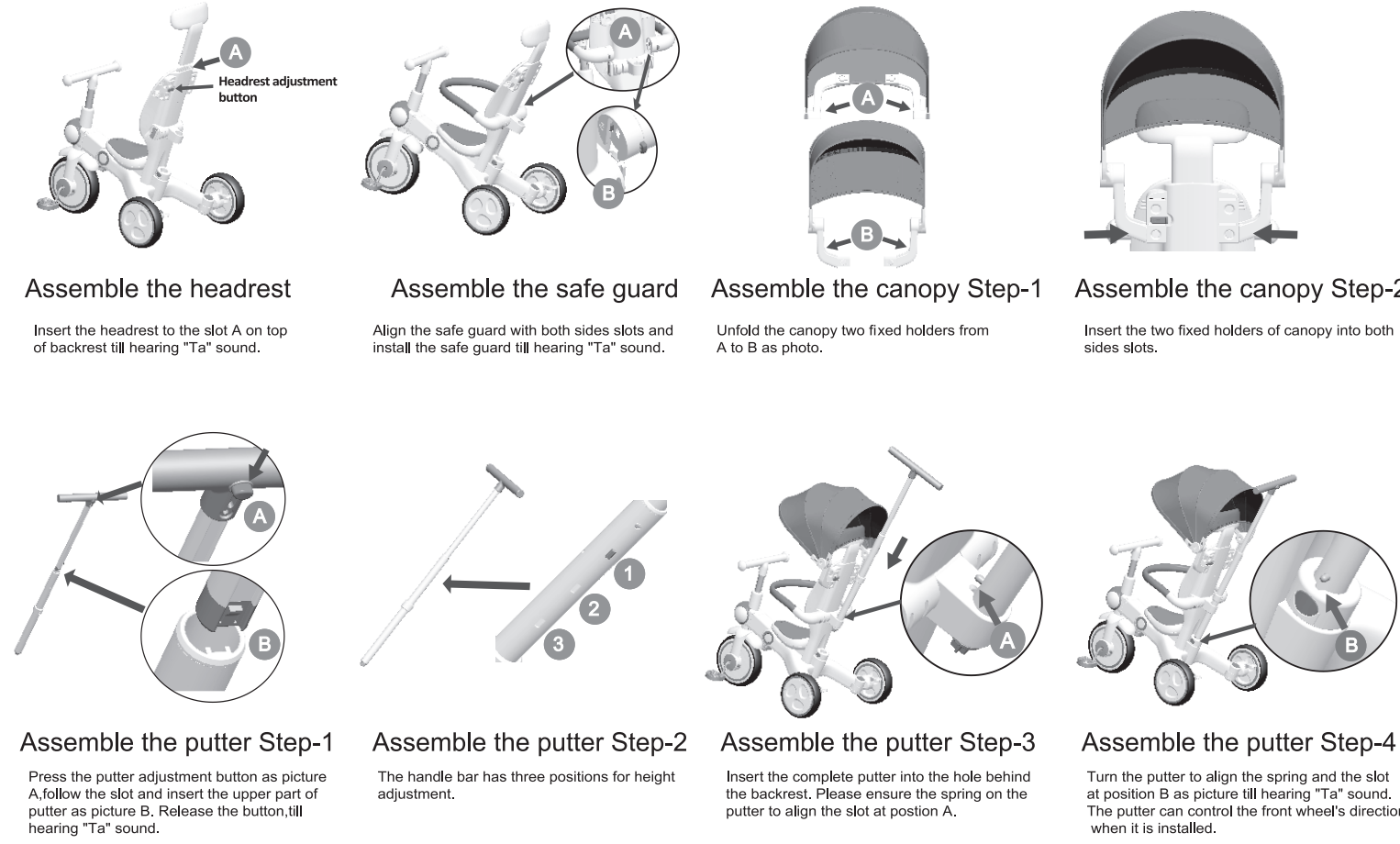
02

ASSEMBLY PROCESS



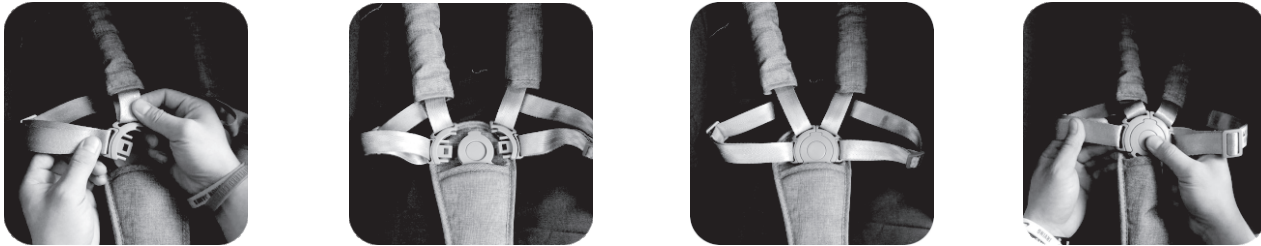
03

ASSEMBLY PROCESS



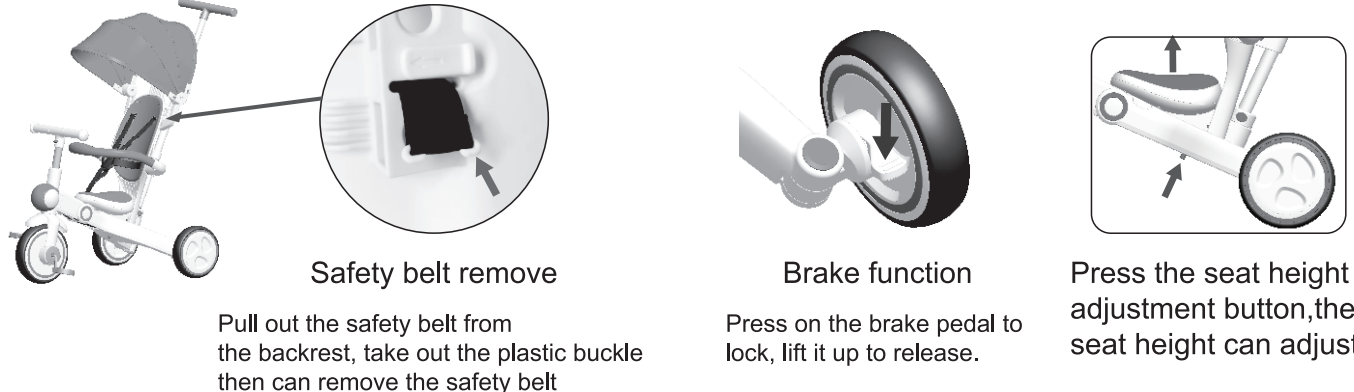
04

Safety belt



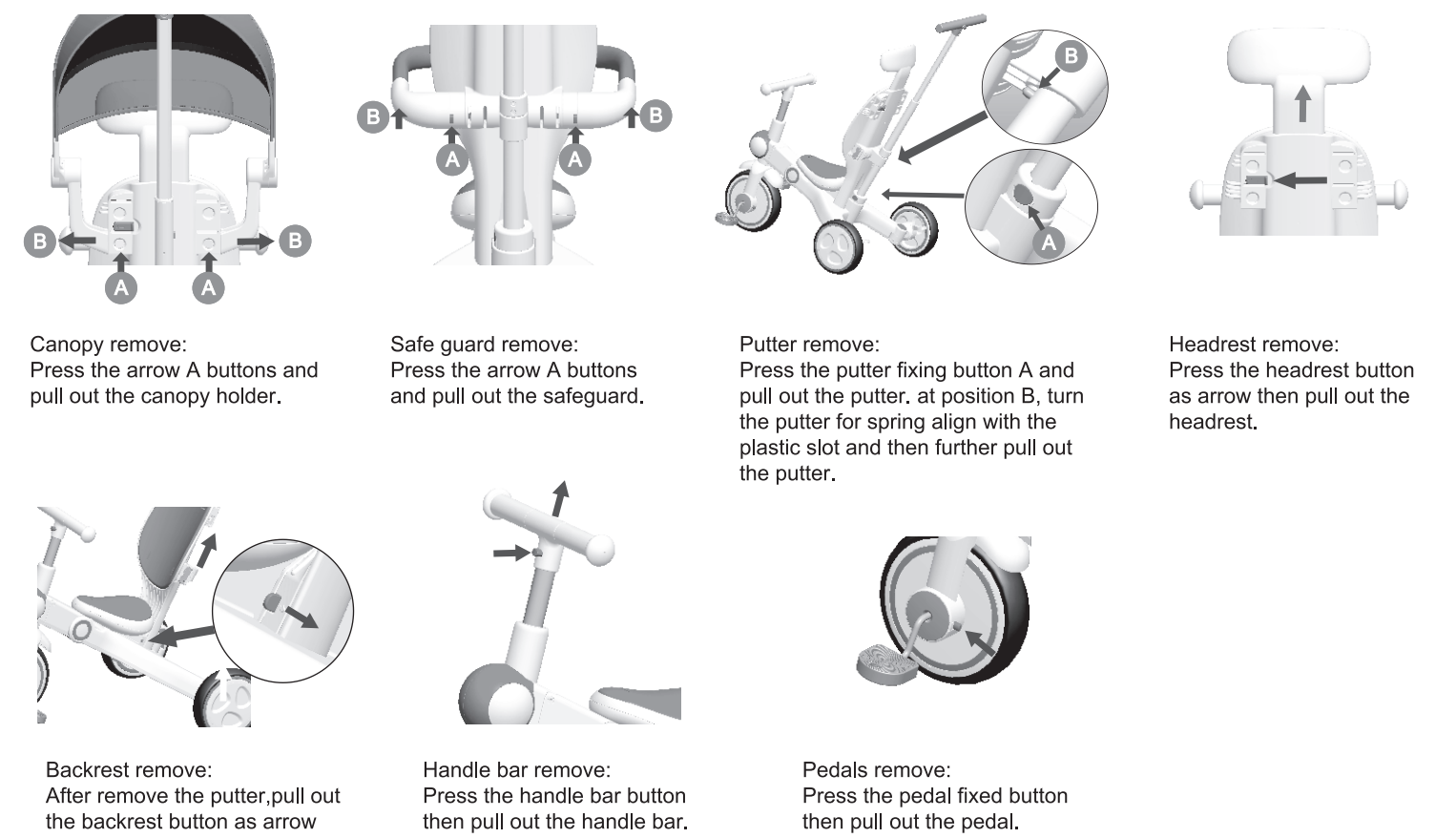
Warning: When the kids sit on the tricycle, the safety belt must be fastened well.  
Step 1: Connect the shoulder and waist buckles, then link to the middle buckles, when hear the"TA" sound, means lock well.  
Step 2: Safety belt length can be adjusted according to the kids age.  
Step 3: Press the middle button to open the safety buckle.

Safety belt remove/Brake function/Seat height adjustment



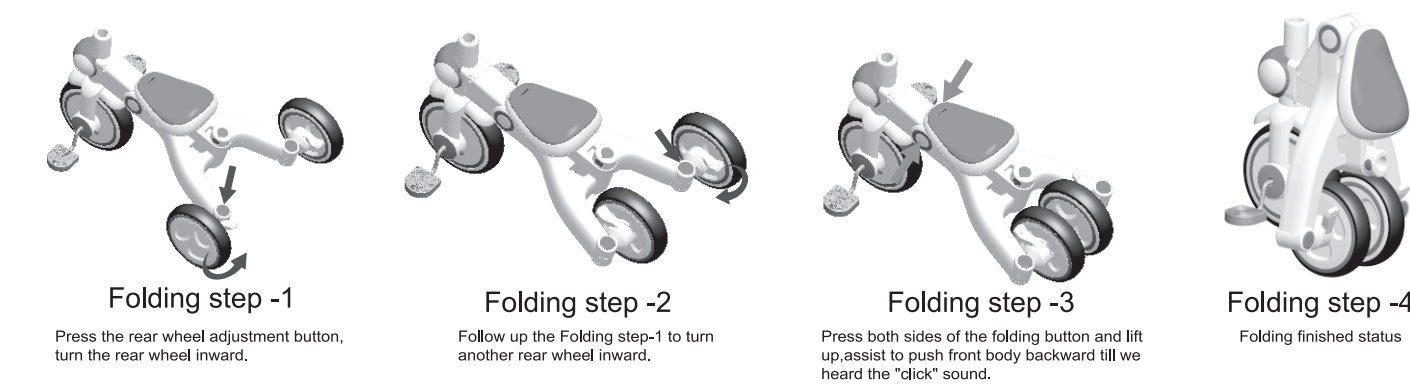
05

Disassembly Process



06

Folding Process



COMMON FAULTS AND HANDING

Common malfunctions	Possible reason	Handling method
Wheels can't rotate smoothly	There is obstacle stuck between the wheel and the wheel base.	Remove the obstacle.
	The wheel bearing is worn out.	Ask for parts to replace.
	The friction between axle and wheel.	Add a little household cleaner or vasoline to lubricate.
	The axle is bend due to overload or heavy impact.	Ask for parts to replace.
Wheels or plastic parts broken	Broken caused by the heavy impact or the big difference in temperature	Ask for parts to replace.
Brake is not working	Brake pedal is abnormal or damaged.	Ask for parts to replace.
Product can't go straightly or the steering is not flexible	Accidental impact deformation during transportation or in using.	Ask for parts to replace.
	There is obstacle stuck in the rolling parts.	Remove the obstacle.

08

WARNINGS

1. Do not leave children unattended while using the product.
2. The child should be instructed how to use the tricycle properly under the supervision of the adult.
3. The product apply to children age 18-60 months.
4. The maximum safe working load is 20kg(44lbs).
5. There are small spare parts inclusive in this products, and all assembling must be done by adults.
6. Safety belt must be fastened well before the child ride on. Shoes, protective-gear and helmet should be worn when using.
7. Do not use in the dangerous areas such as rough roads, public streets, slopes, pools and seaside surrounding to avoid accident & drowning.
8. Before use, safety inspection for the product include the hardware, joint parts, locking device or sharp edges by adult is required . Never use if any parts are missing or broken. It is compulsory to ensure that all locking devices are engaged before use or after switch mode or configuration.
9. Overloading or incorrect use, as well as to use the wrong components may cause the product can't work or unsafety.
10. Do not use if product is unstable or damaged.
11. Before use, please peruse the instruction manual & follow up all the steps to ensure the safety of your child. Keep these instruction manual for future reference. Your child's safty would be affected if don't follow the instructions.
12. Do not hang any article on the tricycle, it will affect the stability and safety.
13. Do not let the product close to the fire.
14. Recommended torque of the fasteners of the product is greater than 8kgf · cm, and less than 16kgf · cm.

09

CARE AND MAINTENANCE

1. Please check all components(screws and rivets) to ensure they are firm and intact without damaged before use. For the safty of your child, do not use if any irregular.
2. Avoid long-duration exposure to humid, bitterly, sunlight or extreme temperature environment, it will cause parts rust, aging, color change or fade, and other conditions, which will affect the service life of the product or causing risks.
3. Don't bleach or use the chemicals to clean the product. Use clean water to wipe the dirt. Avoid water on the metal parts so as not to rust and affect the service life of the product.
4. Inspect regularly the product such as the wheels, locking device, moving parts. Repair it in time if there is any problem.
5. Can use a little diluted lubricant on each rotating part such as whee affecting rotation.

10