

Instruction Manual Model: SL-168



Zhongshan Pova Baby Products Co., Ltd
Add: No. 83 Tongxing West Road, DongSheng Town,
Zhongshan City 528400, Guangdong, China
Mail: sales@zsjoiner.com

V1.0/2202

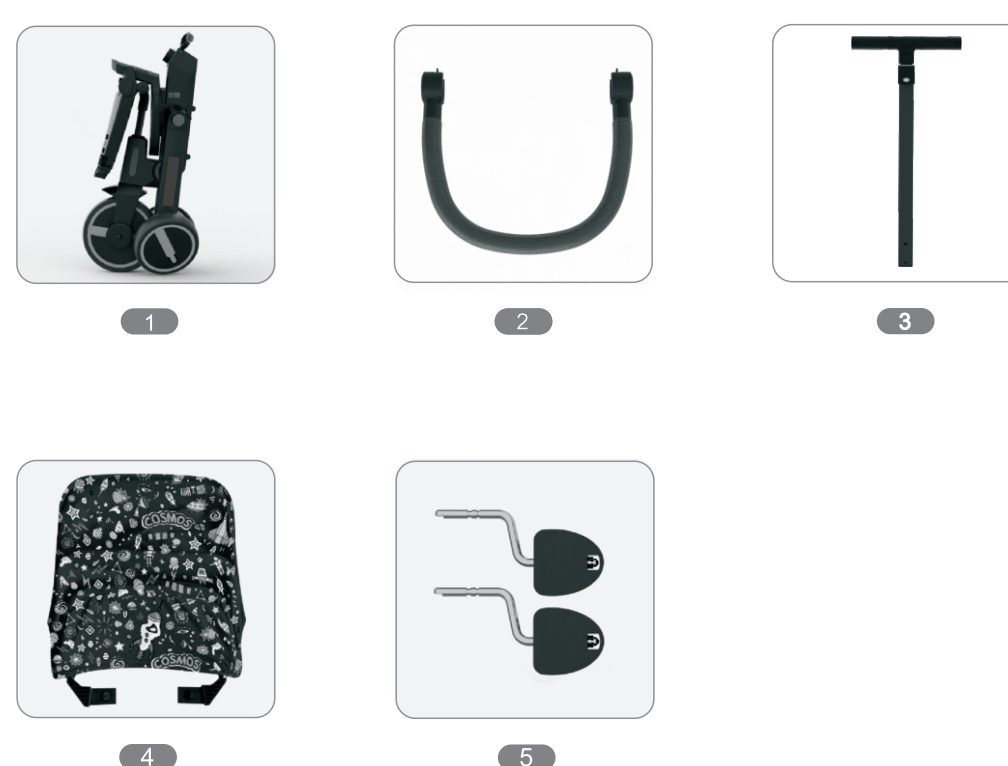
Please read the product manual carefully before assembling or using it, and keep the manual for future reference.

CONTENT

Main part list	02
Product character	03
Function characteristics	04
Assembly process	05-11
Warning and safe notice	12
Care and maintenance	13
Common faults and handling	14

MAIN PART LIST

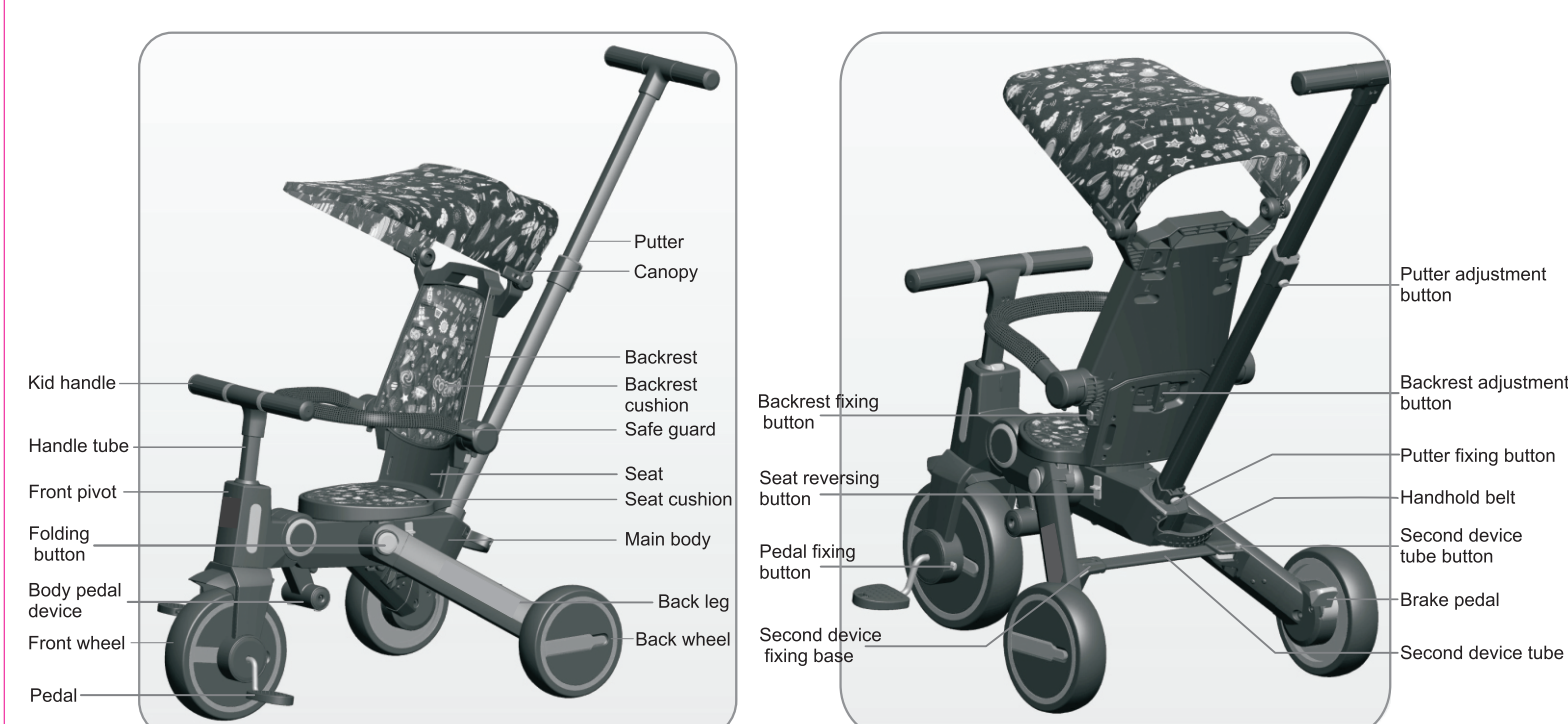
1. Main body
2. Safe guard
3. Putter
4. Canopy
5. Pedal



01

02

PRODUCT CHARACTER



03

FUNCTION CHARACTERISTICS

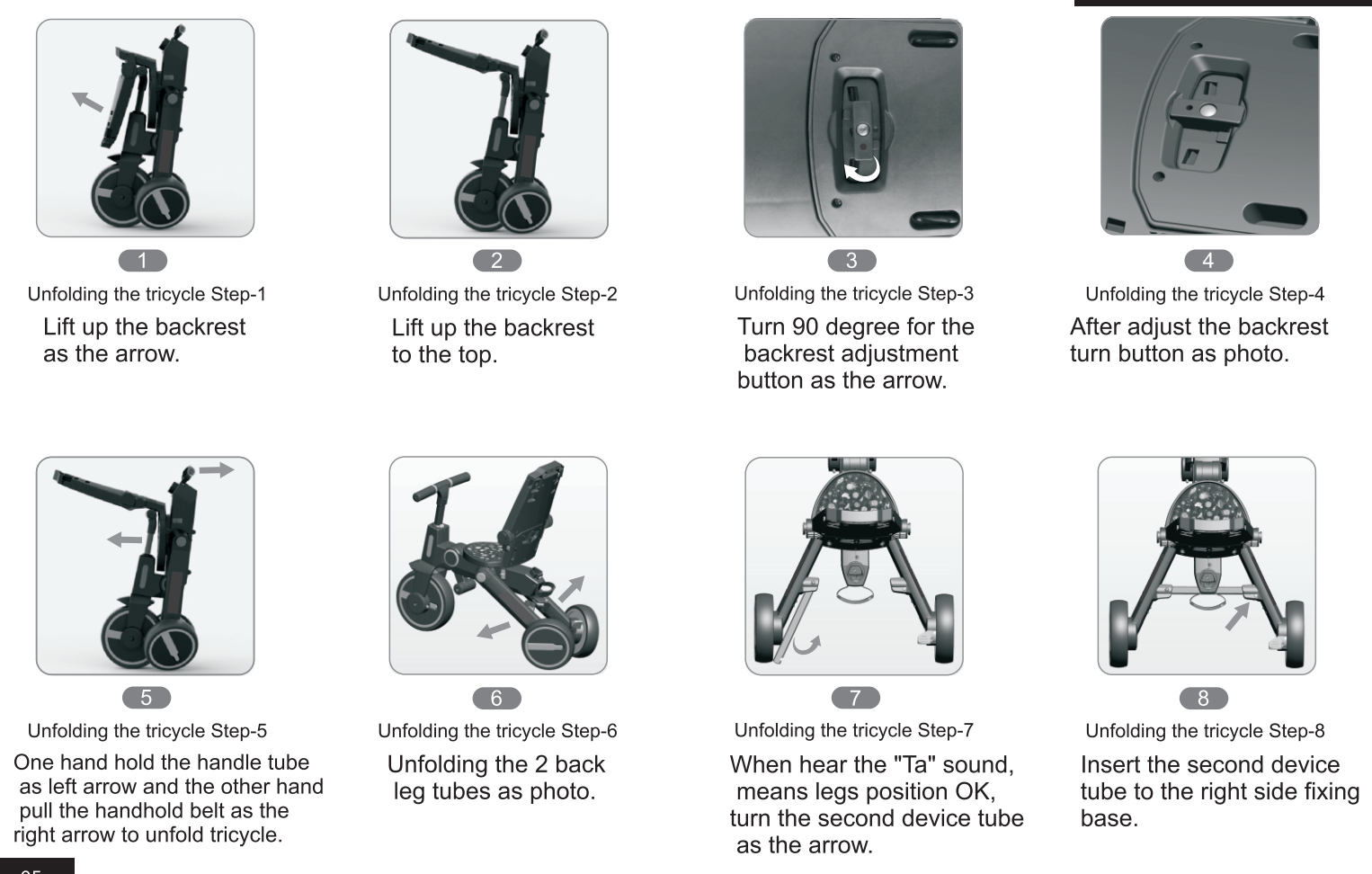
This tricycle has 7 different modes which apply to the kids grow up requirement.



03

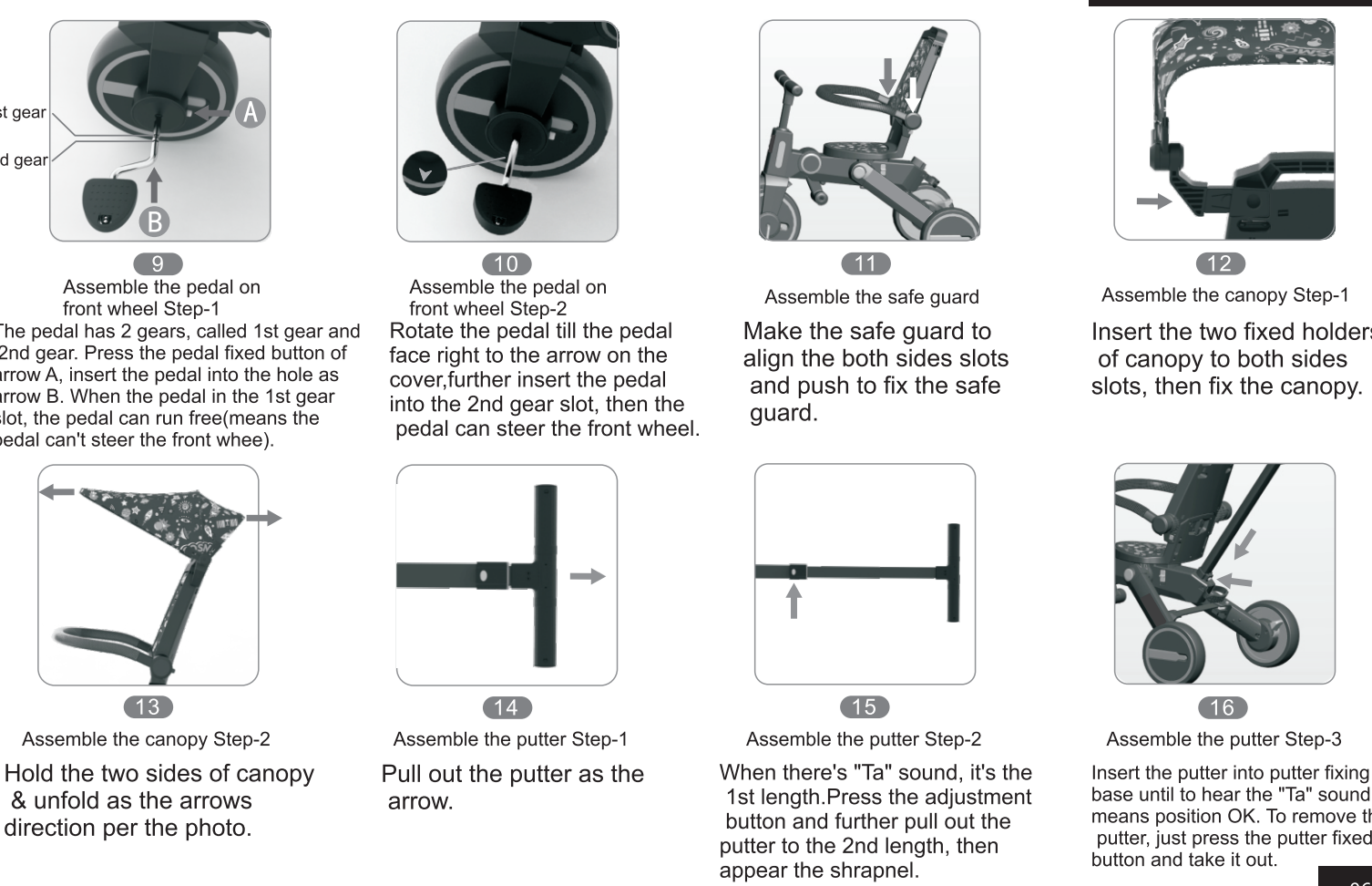
04

ASSEMBLY PROCESS



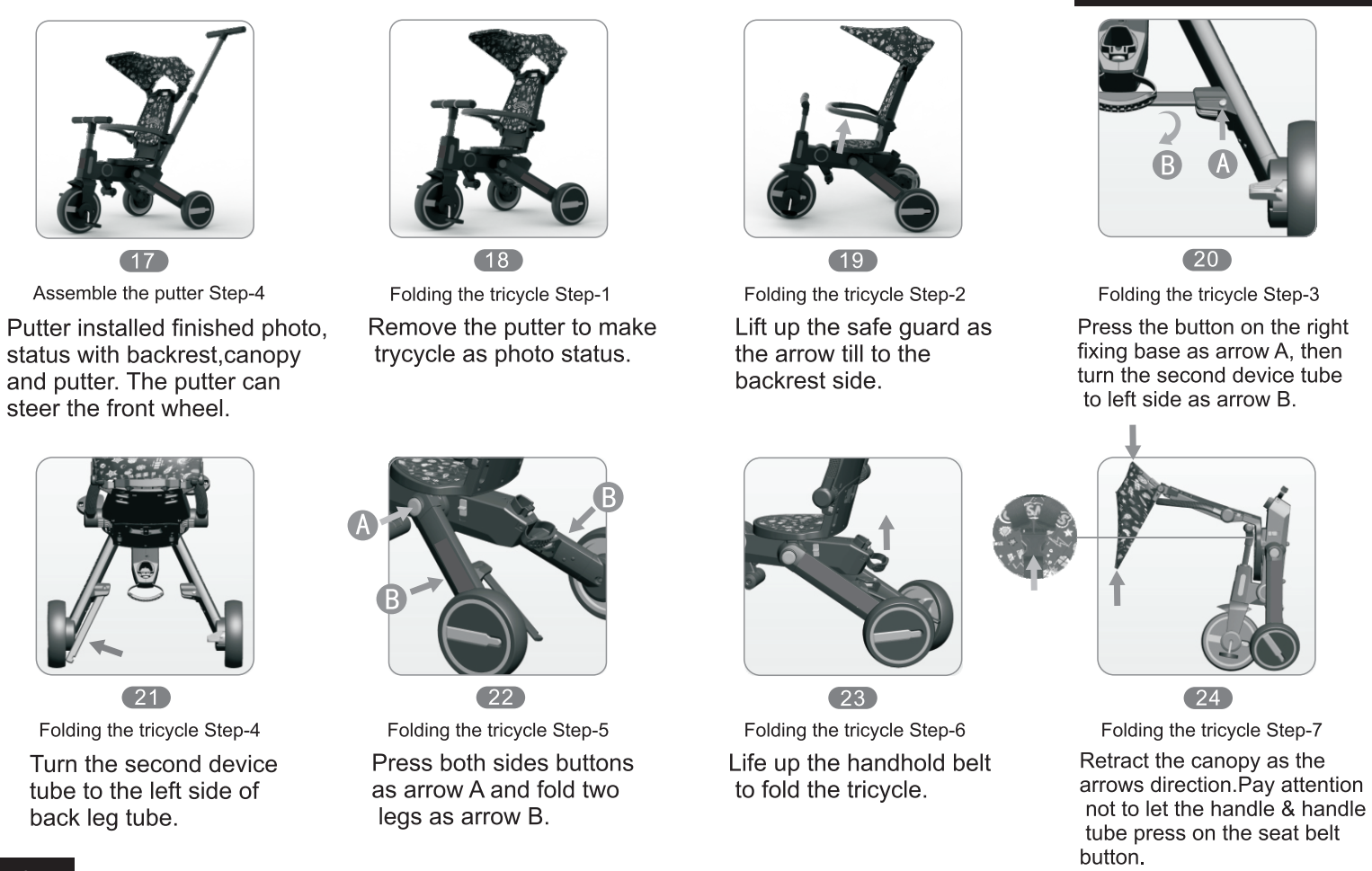
05

ASSEMBLY PROCESS



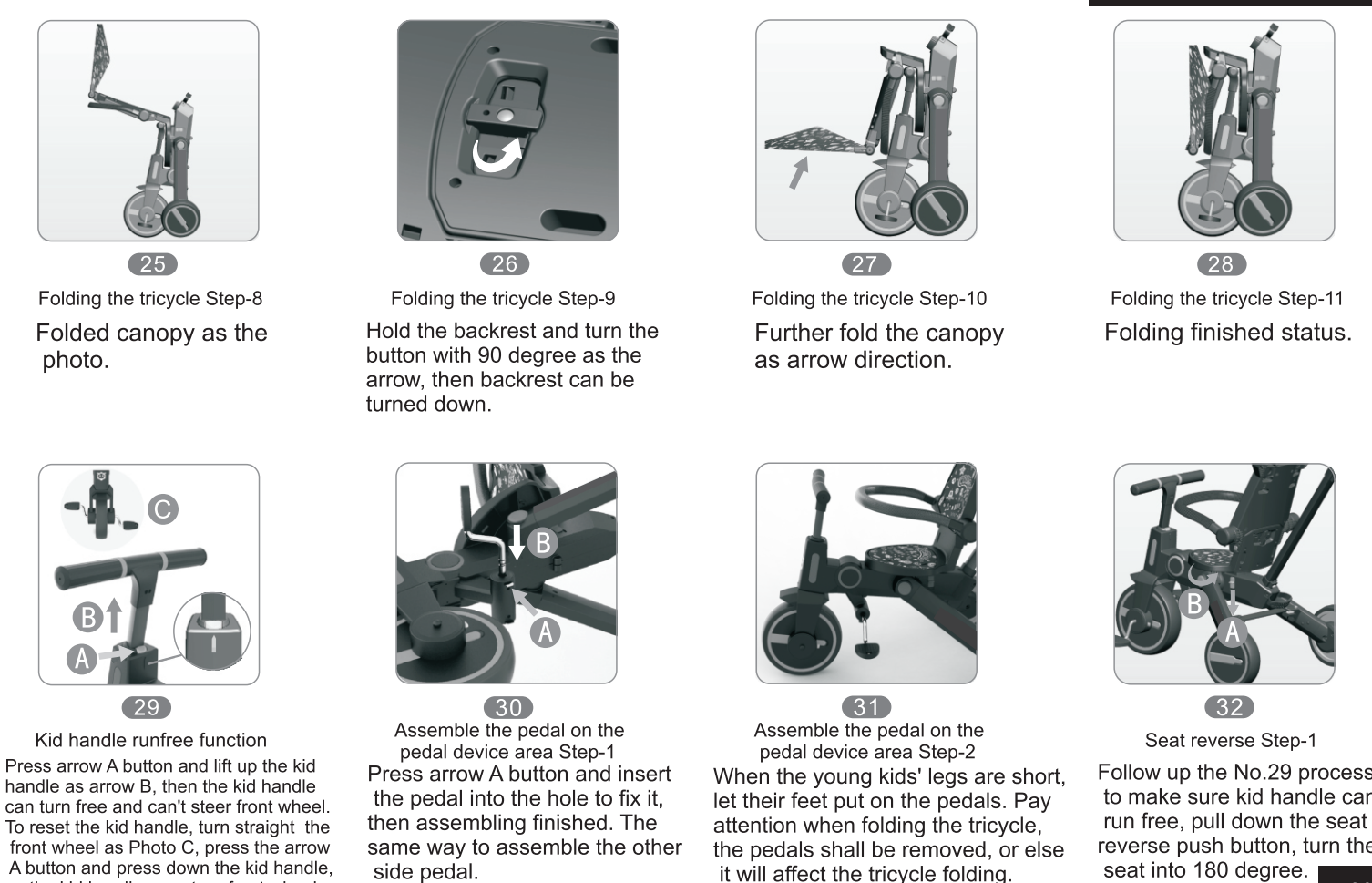
06

ASSEMBLY PROCESS



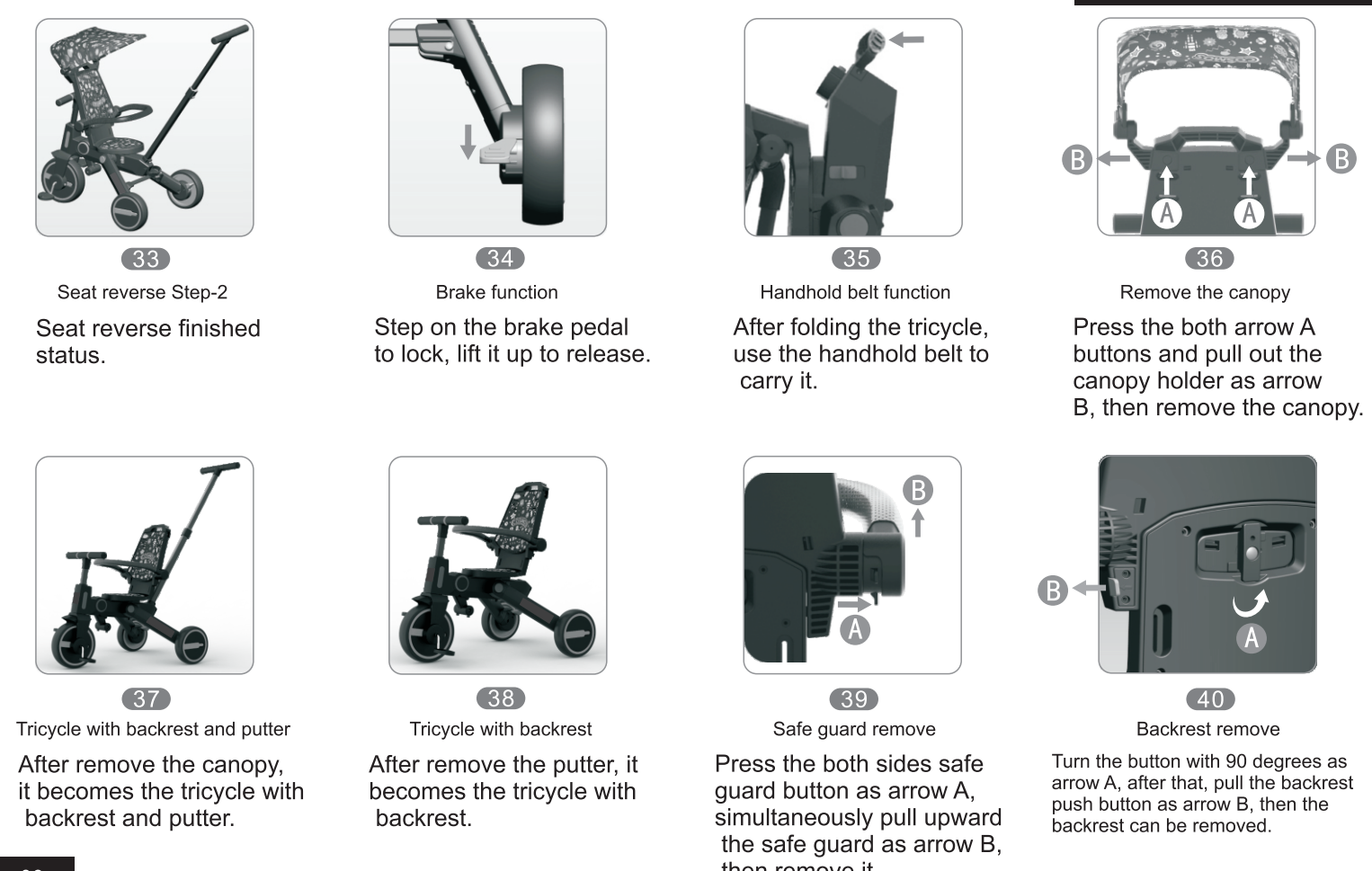
07

ASSEMBLY PROCESS



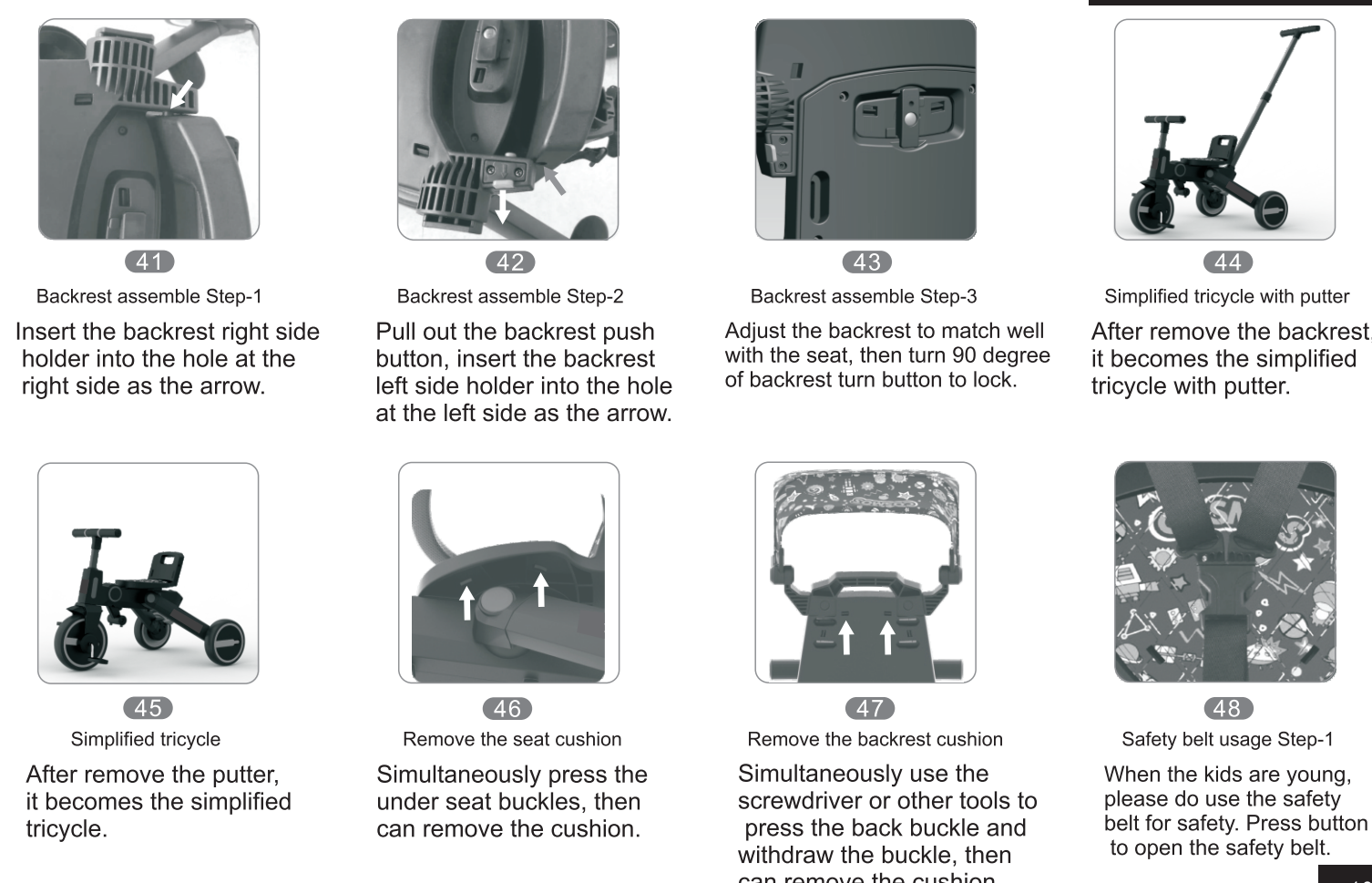
08

ASSEMBLY PROCESS



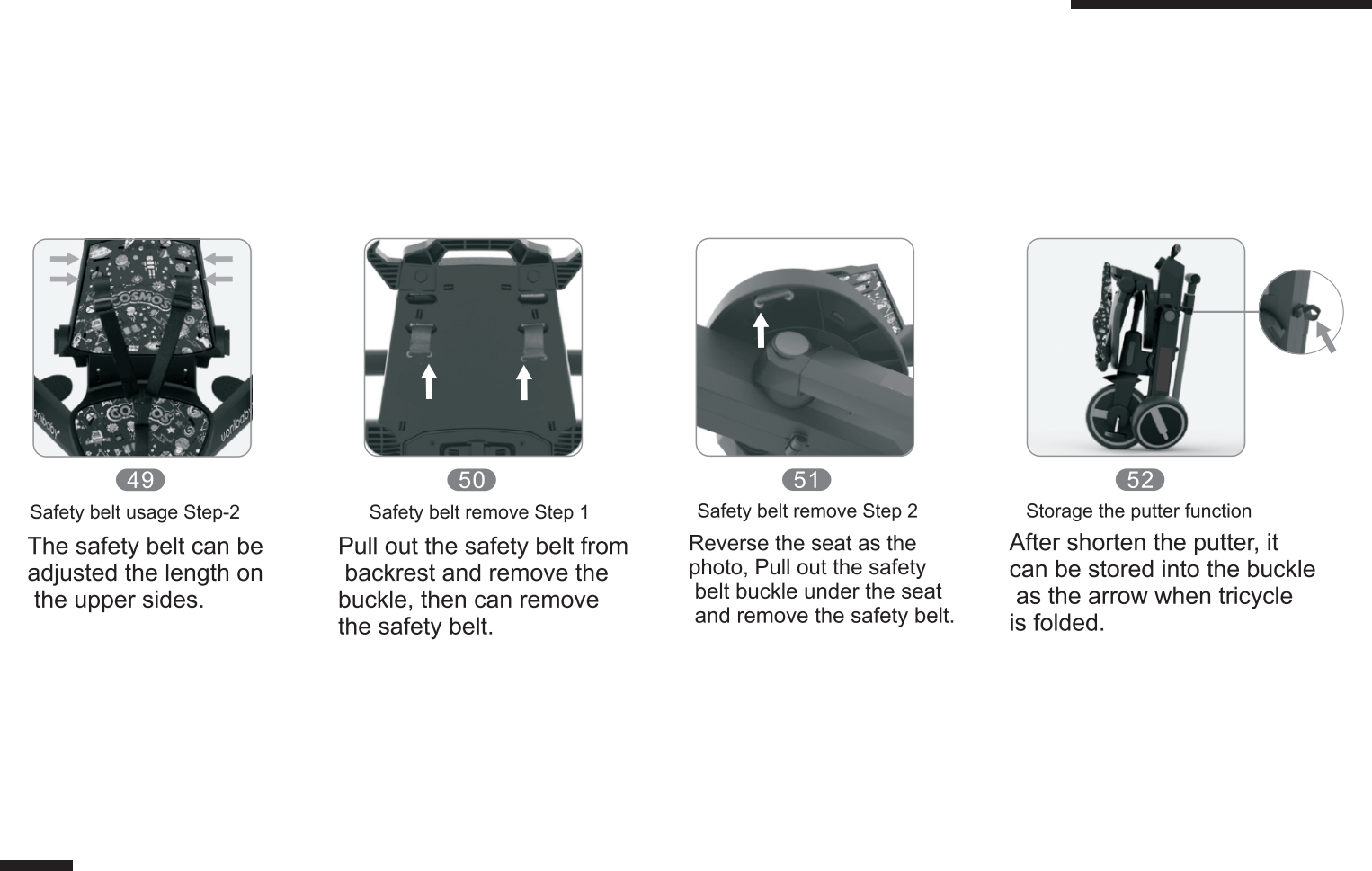
09

ASSEMBLY PROCESS



10

ASSEMBLY PROCESS



11

⚠ WARNINGS

1. Do not leave children unattended while using the product.
2. The child should be instructed how to use the tricycle properly under the supervision of the adult.
3. The product apply to children age 18-60 months.
4. The maximum safe working load is 20kg(44lbs).
5. There are small spare parts inclusive in this products, and all assembling must be done by adults.
6. Safety belt must be fastened well before the child ride on. Shoes, protective-gear and helmet should be worn when using.
7. Do not use in the dangerous areas such as rough roads, public streets, slopes, pools and seaside surrounding to avoid accident & drowning.
8. Before use, safety inspection for the product include the hardware, joint parts, locking device or sharp edges by adult is required. Never use if any parts are missing or broken. It is compulsory to ensure that all locking devices are engaged before use or after switch mode or configuration.
9. Overloading or incorrect use, as well as to use the wrong components may cause the product can't work or unsafety.
10. Do not use if product is unstable or damaged.
11. Before use, please peruse the instruction manual & follow up all the steps to ensure the safety of your child. Keep these instruction manual for future reference. Your child's safety would be affected if don't follow the instructions.
12. Do not hang any article on the tricycle, it will affect the stability and safety.
13. Do not let the product close to the fire.
14. Recommended torque of the fasteners of the product is greater than 8kgf · cm, and less than 16kgf · cm.

12

CARE AND MAINTENANCE

1. Please check all components(screws and rivets) to ensure they are firm and intact without damaged before use. For the safety of your child, do not use if any irregular.
2. Avoid long-duration exposure to humid, cold, sunlight or extreme temperature environment, it will cause parts rust, aging, color change or fade, and other conditions, which will affect the service life of the product or causing risks.
3. Don't bleach or use the chemicals to clean the product. Use clean water to wipe the dirt. Avoid water on the metal parts so as not to rust and affect the service life of the product.
4. Verify regularly the status of product such as the wheels, locking device, moving parts. Repair it in time if there is any problem.
5. Can use a little diluted lubricant on each rotating part such as wheel joints, etc. Don't use sticky lubricant to avoid debris sticking and affecting rotation.

13

14