

Environmental tips



Please dispose of the package, waste and used components (battery) and hazardous fluid antifreeze agent and machine oil according to local waste disposal regulation to ensure environmental safety and please always remember to recycle them for further use.

Product standard:

GB4706.1、GB4706.7、GB4343.1、GB17625.1
(IEC60335-1、IEC60335-2-2、EN62233、EN61000)

IMPORTANT STATEMENT

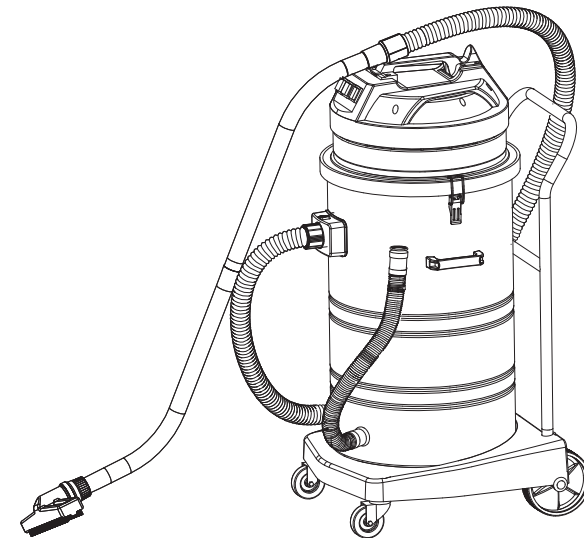
1. The content of this manual is for all users. Please read this manual carefully.
2. Manufacturer takes no responsibility to any damage due to operate machine without following this manual.
3. Manufacturer takes no responsibility to any damage due to modify, disassemble or do any other operations to the machine.
4. This manual provides important instructions on product operation. Manufacturer reserves the right to update and revise it. If there are some difference, the actual product shall prevail.

WARNING

1. Do not put the suction inlet towards ears, eyes, mouth, nose, reproductive organ or other vulnerable parts because the machine has strong suction.
2. Do not direct suction inlet at baby in the process of operating the machine.
3. The machine has no fireproof and anti-explosion functions. Keep it away from oily substances, gunpowder, alcohol and inflammables, explosion-prone objects.

VinnerMyer Wet/Dry Vacuum Cleaner

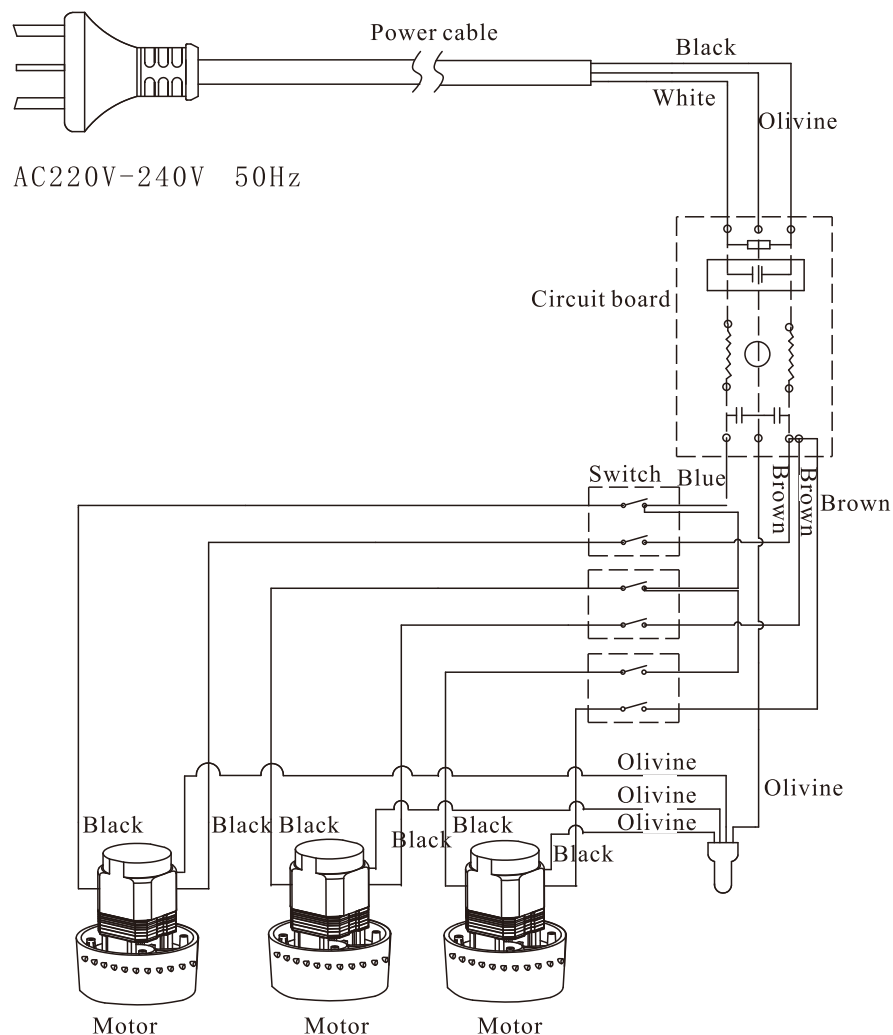
LSU380 Product Manual



There is important instruction in this manual for safe use.
Please read this instruction carefully before starting the machine.

Technical details

Wiring diagram



! Attention:

- This manual is provided together with the machine.
- This manual includes instructions on operation and maintenance.
- Please read this manual carefully before operating and maintaining the machine.

Description of symbols

Description of symbols in this manual

Warning



Text starting with this symbol is closely related to safety, which indicates potential accidents and human injuries. If the symbol appears in a chapter, the text starting with a “warning” symbol in the chapter should be read. If the text is not in the chapter, the number of the page where it appears can be found.

Attention



Text starting with this symbol indicates what will bring damage to the burnisher. If the symbol appears in a chapter, the text starting with an “attention” symbol in the chapter should be read. If the text is not in the chapter, the number of the page where it appears can be found.

Environmental tips



Text starting with this symbol is a piece of information related to environment protection.

Note



Text starting with this symbol provides supplementary information for a chapter.

Description of symbols on the unit



Follow the notes during operation.



Keep it away from fire.



Keep it from flammable or explosive materials and corrosive solutions.



Indication for strong current and avoidance of water.



Please read the operating manual and instruction before starting the machine.

Contents

Packing list

Standard configuration	1
Fittings	1

Maintenance instruction

Warranty information	2
Daily maintenance	2
Motor maintenance	2
Trouble shooting	3
Disclaimer	3

Safety precautions

Don'ts	4
Safety regulations	4

Operating instruction

Operating steps	6
-----------------	---

Technical details

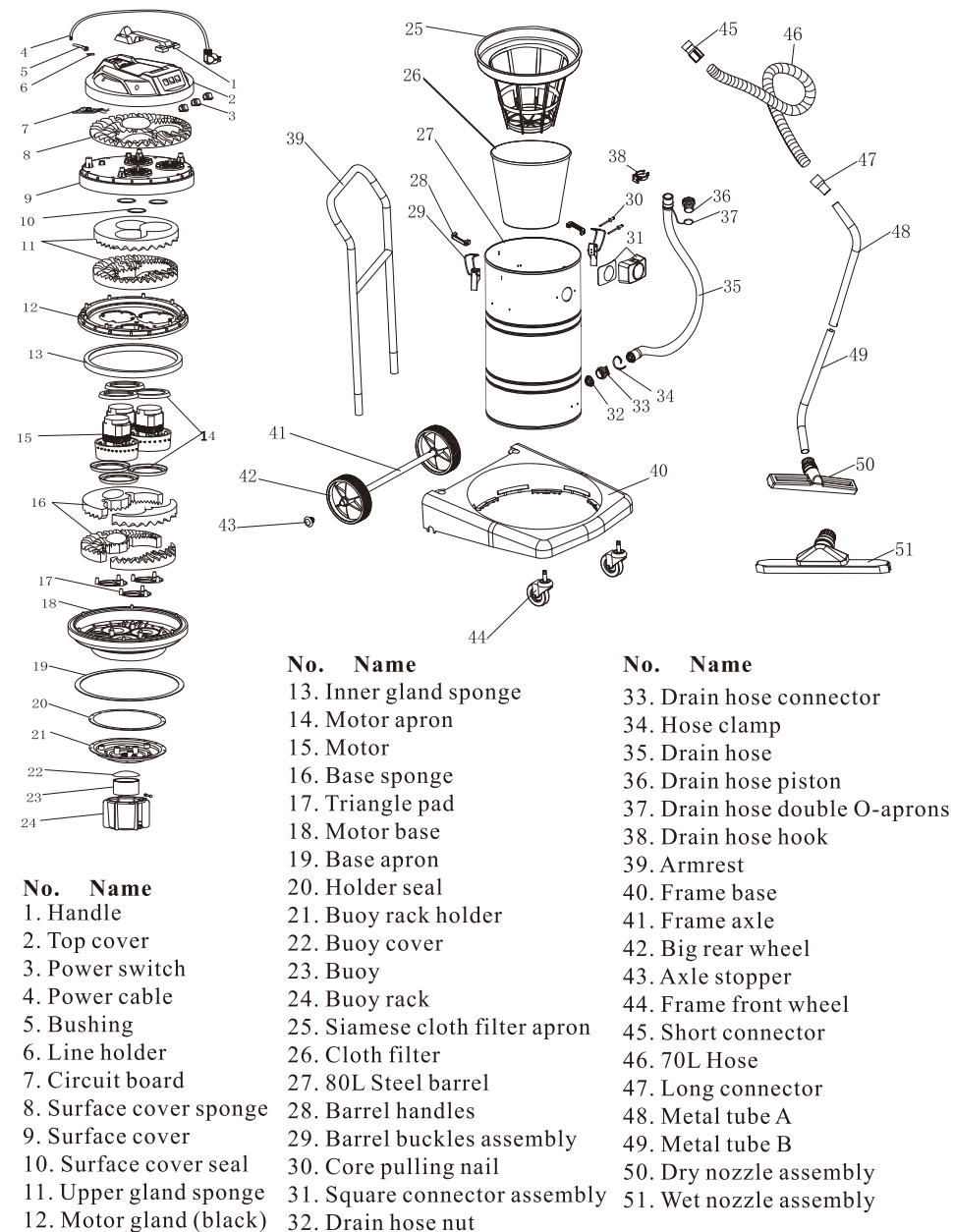
Technical specifications	8
Diagram Exploded	9
Wiring diagram	11

Note

This machine is designed for the cleaning of hotels, restaurants, factories, shopping malls and most of the industrial and commercial areas.

Technical details

Diagram of the machine



Technical details

□ Technical specifications

Type	LSU380
Power	3000W
Cooling mode	Recycle
Vacuum suction power	3100mmH ₂ O
Capacity	80L
Height	113cm
Tank diameter	44cm
Air flow	120L/S
Hose diameter	Φ40m
Function	Wet/dry
Voltage	220V-240V
Length of cable	7.2m
Carton dimension	60×53×107.5cm
Package	1 unit/carton

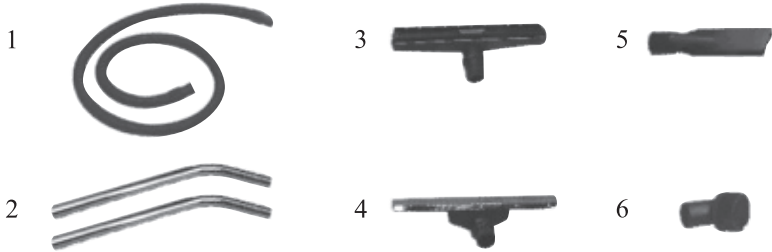
Packing list

Standard configuration

No.	Name	Unit	Quantity
1	Main unit	Set	1
2	Product Manual	Copy	1

Fittings

No.	Name	Unit	Quantity
1	Suction hose	Set	1
2	Metal tube A/B (one for each)	Set	2
3	Dry floor nozzle	Set	1
4	Wet floor nozzle	Set	1
5	Crevice tool	Piece	1
6	Dust brush	Piece	1



Maintenance information

Warranty information

Our authorized dealer is responsible for the repair of sold products. The critical components of machine, such as the motor, are guaranteed for 12 months

Note

Please note that the following cases will make the warranty invalid:

1. Any damage caused to the machine by unauthorized refit;
2. Any damage caused by the installation of unauthorized components or accessories;
3. Any damage caused by operating disobeying the product manual;
4. Any damage which is not due to quality-related reasons.

Daily Maintenance

When the cleaning work is over:

1. Clear debris in the barrel after use. Clean the fittings periodically and check if there is perforation or air leak.
2. Check whether the power cable and the plug are intact. Coil the power cable and hang them on the top cover.
3. After vacuuming, make sure the air in let is clear. Remove clogs and make sure buoy cover is fitted properly.
4. Check whether the barrel is cleared and whether the fittings are clogged, such as the hose, the nozzles, and the cloth filter.
5. Check whether the machine's suction power is normal. If not, check whether the connected fittings are connected well and whether the motor base seal is in good order.
6. Check the cleaning work. If it is a dust vacuuming, fit the cloth filter. If it is a wet work, remove the cloth filter. However, the machine can not be used to clean areas with too much debris and mud.

Motor maintenance

The carbon brush of the motor should be checked or replaced by professional every 3 months.

Operating instruction

Operating steps

4. After all the fittings needed for the work are fixed, the machine can be operated.

Attention

Ensure that leakage protector is available before use. Check the voltage on the nameplate and make sure the voltage you are using is suitable for the machine. Check whether the power cable, the plug and the switch are intact. While the machine is working, the power cable should be put behind the barrel and the nozzle. (fig.4)

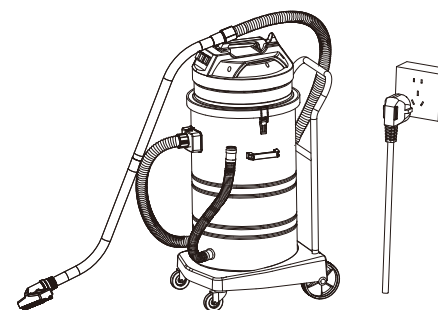


fig.4

5. As for narrow and rough floor, connect the crevice tool or the dust brush directly with the hose to do the cleaning work.

Operating instruction

□ Operating steps

1. Fix the fittings according to the cleaning work. If it is a dust vacuuming, the cloth filter should be fixed; if it is a wet work, the cloth filter should be removed. (fig.1)

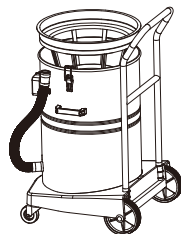


fig.1

2. Put the machine head on the machine body and make sure the power switch center in the machine head is aligned with center of square connector. Then fasten the two buckles to fix the machine body. (fig.2)

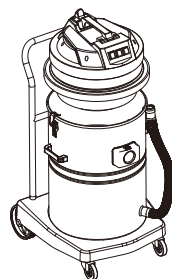


fig.2

3. Put the hose end with the short connector into the square connector and insert the switch of the square connector into the groove of the short connector. The other end of the hose should be connected with different fittings according to the cleaning work, such as the dry floor nozzle assembly, the wet floor nozzle assembly. (fig.3)

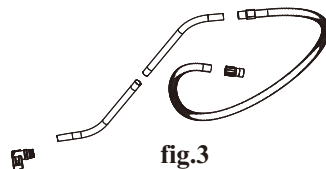


fig.3

Maintenance information

Trouble shooting by regular checking

1. If there is dirt in the cloth filter, clean the cloth filter thoroughly.
2. If there is too much rubbish in the barrel, clear the rubbish.
3. If the hose and the nozzles are clogged, clear out the hose and the nozzles.

Disclaimer

In the following cases, our company accepts no responsibility.

1. Check the voltage on the nameplate, and make sure that the voltage you are using is suitable for the machine. Our company accepts no responsibility for damage or human injuries caused by using wrong power sources.
2. Do not use the machine over its load. Our company accepts no responsibility for damage to any components caused by using the machine over its load.
3. Do not use the machine in adverse environment, such as acid, alkaline, and too high or too low temperature environment. Our company accepts no responsibility for damage, accidents or human injuries caused by using the machine in this kind of environment.
4. Use and maintain the machine according to the product manual. Our company accepts no responsibility for problems or damage caused by not obeying the product manual.
5. Our company accepts no responsibility for damage or human injuries caused by refitting the machine without permission.

Note

All the guarantee service is applied to users in the mainland of China. It is not applied to users in Hong Kong, Taiwan and foreign countries.

Safety precautions

This manual contains important information about the safe use of the machine, operation guide, recommendation and things requiring attention. Please read it carefully.

Don'ts:

- Do not block the ventilating place and the heat-discharge place;
- Do not move, change or cover the safety information sign;
- To ensure personal safety, the machine must be operated by a trained technician.
(New users can be trained the basic operation in the field by the sales agent.)

Safety precautions

Precautions before start the machine:

1. Check the voltage on the nameplate and make sure the voltage you are using is suitable for the machine. If not, do not use it.
2. Check whether the power cable, the plug and the switch are intact.
3. Check whether the switch of the machine is aligned with the square connector.
If not, adjust it to align with the square connector, otherwise, some other fittings may be easily broken.
4. Check whether the barrel is cleared up and whether the fittings are clogged, such as the hose, the nozzles, and the cloth filter.
5. Check whether the machine's suction power is normal. If not, check whether the connected fittings are connected well and whether the motor base seal is in good order.
6. Check the cleaning work. If it is a dust vacuuming, fit the cloth filter. If it is a wet work, remove the cloth filter. However, the machine can not be used to clean areas with too much debris and mud.

Precautions while operating the machine

1. Check whether the power cable plug is connected well and stable. If not, the machine will work in snatches and the suction power of the motor will not be enough, which will affect the lifespan of the motor.
2. If there is a lot of cleaning foam in the water while sucking water, it is necessary to put appropriate amount of YIMEI defoamer solution into the barrel, otherwise, the foam is easy to get into the motor and damage it.
3. While the machine are working, the power cable should not be too long, so do not prolong the power cable without permission. And the cable diameter can not be shorter than the specified diameter. Do not circle the cable, which will generate magnetic field and result in a low voltage of the machine.
4. Pay attention to the sound of the machine. If the sound becomes deep, check whether the hose and the barrel are full of debris. If they are, clear out the hose and the barrel.
5. Do not make the barrel upside-down to prevent liquid, including corrosive liquid, getting into the motor. Remove the machine head before dealing with the liquid in the barrel.
6. Do not use the machine for a long time continuously. And keep the continuous working time within 2 hours in order to extend service life.

Safety precautions



Warning

Safe use regulation

Follow the following basic precautions before use the machine:

1. Before fixing components, please switch off the power of the machine and pull out the power plug.
2. Before disassembling any connected part of the machine, please switch off the power of the machine and pull out the power plug.
3. Children are not allowed to use this machine.
4. If the power cable is broken, in avoidance of danger, contact the manufacturer, after-sales service, or a professional person to replace it.

INSPECT CERTIFICATE

Cable: <input checked="" type="checkbox"/>	_____	Charger: <input checked="" type="checkbox"/>	_____
Batteries: <input checked="" type="checkbox"/>	_____	Switch: <input checked="" type="checkbox"/>	_____
Outside: <input checked="" type="checkbox"/>	_____	Fittings: <input checked="" type="checkbox"/>	_____
Suction: <input checked="" type="checkbox"/>	_____	Control: <input checked="" type="checkbox"/>	_____
Fuselage: <input checked="" type="checkbox"/>	_____	Operation: <input checked="" type="checkbox"/>	_____
Manual: <input checked="" type="checkbox"/>	_____	Packing: <input checked="" type="checkbox"/>	_____
QC by: <input checked="" type="checkbox"/>	_____	Date: <input type="checkbox"/>	_____