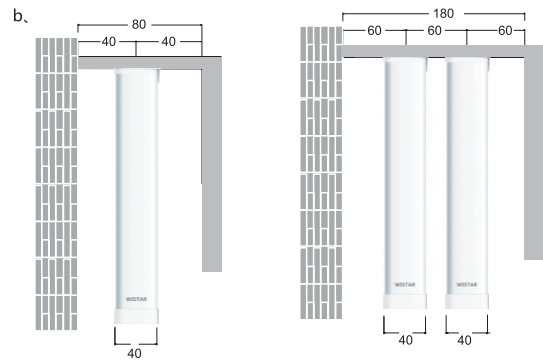
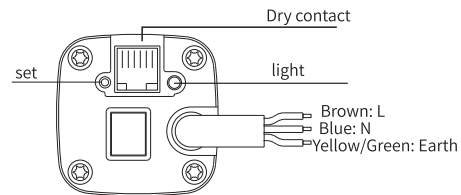


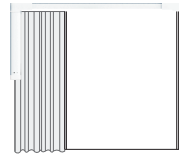
Curtain Motor Instruction

1. Technical dates

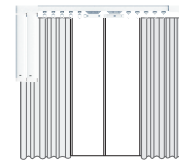
a, NY-CM-AC305 curtain motor
AC input: AC220V/50Hz
Insulation class: F
Protection index: IP20



A. Opened from one direction

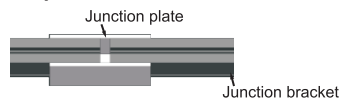


B. Opened from double directions



2. Belt & rail installation

A. Rail junction



Note: ■ Rail junction is needed when rails are shorter than the requirement.
■ It's inconvenient to deliver long rail, so most people chose cut them short, and then using rail junction to recover the length.

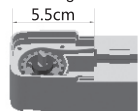


1) Insert junction bracket along with rails to the joint of two rails.

2) For the follow installation steps, please refer to "B. Belt & rail installation".

B. Belt & rail installation

1 Aluminum track size determining.

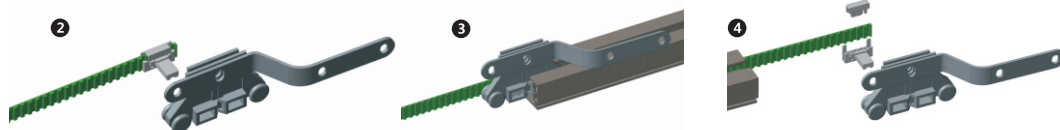


The length of aluminum track
= the length of entire rail - the length of transfer box*2



For example, the length of entire rail is 200cm

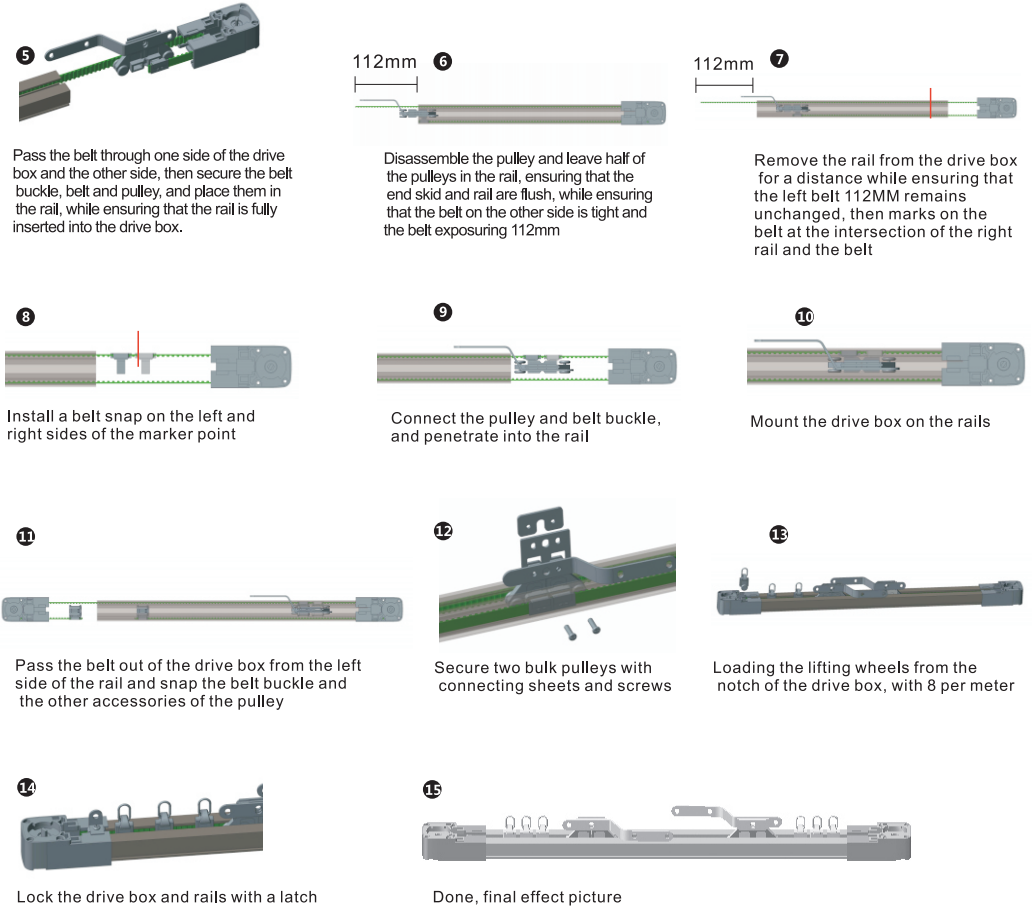
The length of aluminum track = 200 - 5.5 * 2 = 189cm



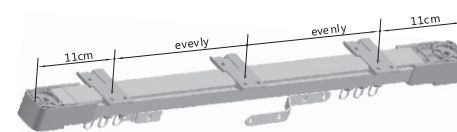
Cut with scissors from the middle of the belt crest. Then the belt is reserved for half a rack, secured with a belt buckle, and inserted the belt buckle into the pulley.

Use the pulley as towing, and the belt is passed through one end of the rail and the other end.

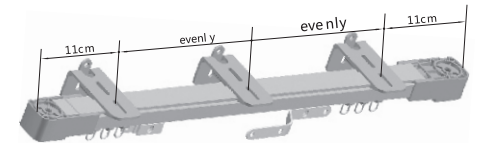
Disassemble the pulley and belt buckle



3. Curtain motor and wire connection

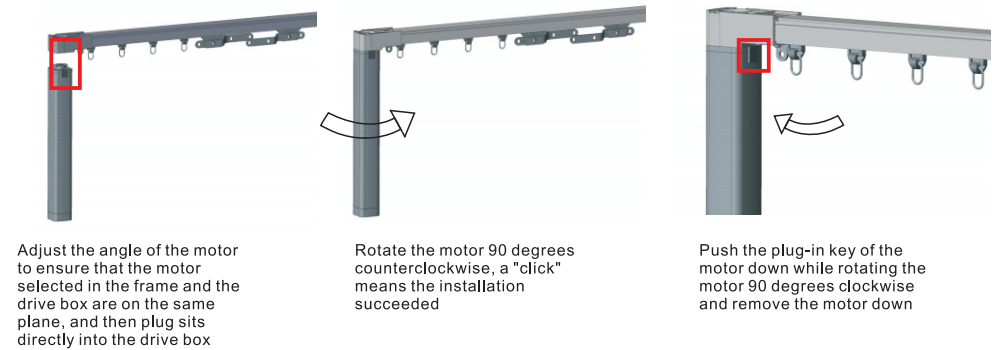


1) Ceiling installation.



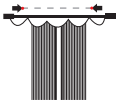
2) Side installation.

Motor installation and removal methods



4.Hand start function

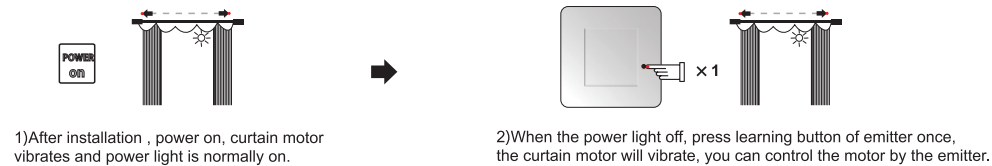
Gently pull the curtain fabric, it easily opens and closes.



5.Code learning

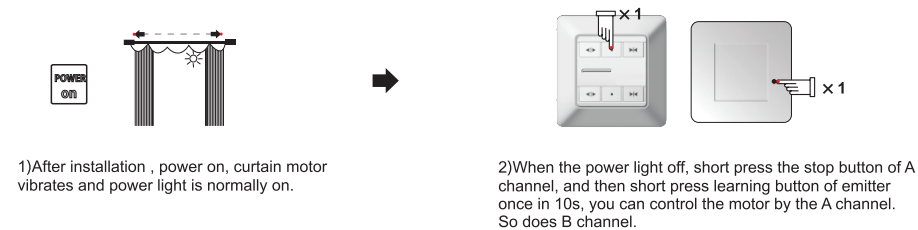
Way 1: Power on learning

a.Single channel emitter (WSRE204)



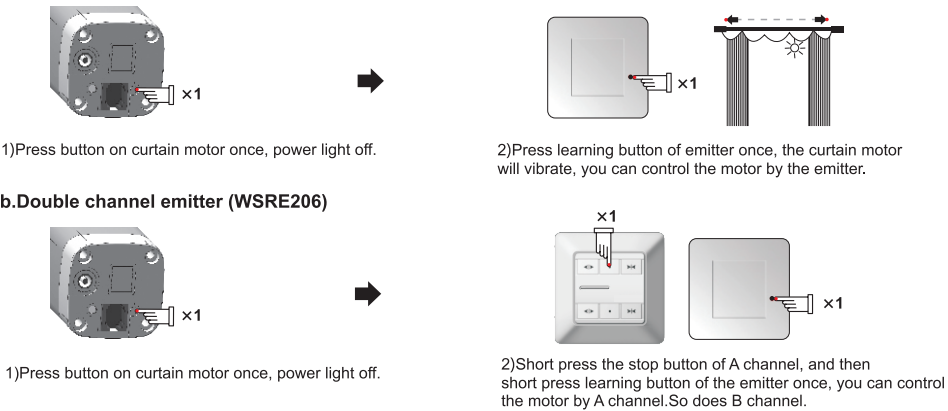
b.Double channel emitter (WSRE206)

This emitter has A and B channel, can control two receiver without interference.



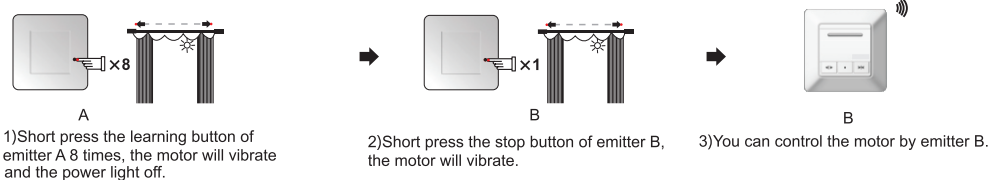
Way 2: Button learning

a.Single channel emitter (WSRE204)

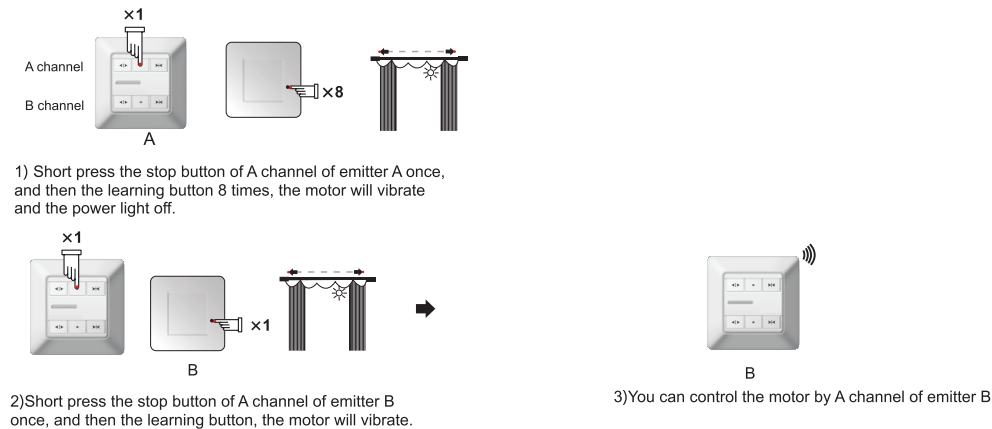


6.Copy

a.Single channel emitter (WSRE204)

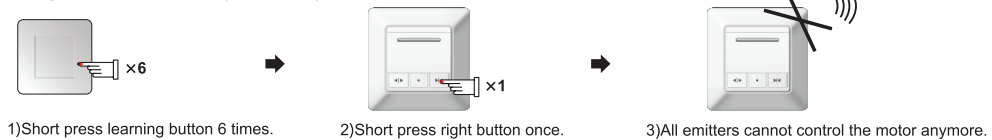


b.Double channel emitter (WSRE206)

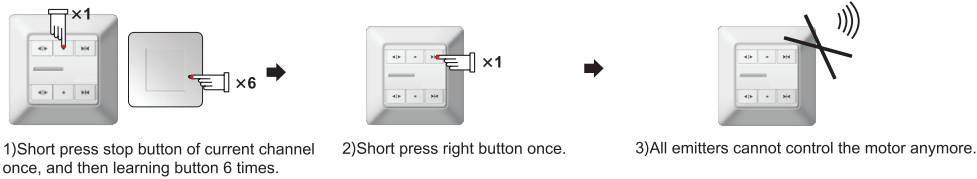


7.Delete

a.Single channel emitter (WSRE204)

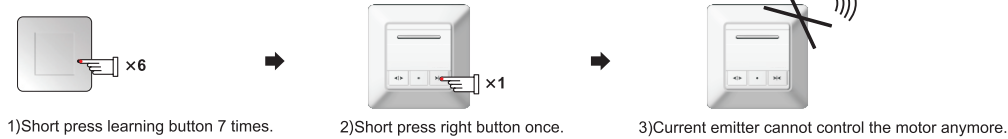


b.Double channel emitter (WSRE206)

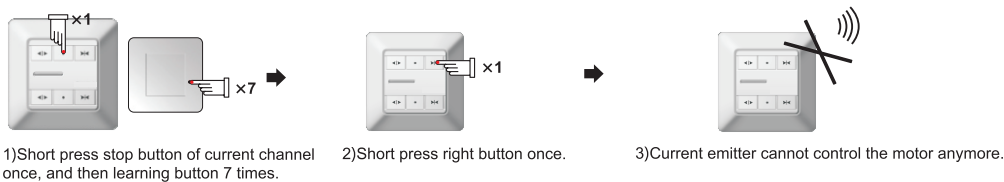


8.Delete current emitter

a.Single channel emitter (WSRE204)



b.Double channel emitter (WSRE206)



9.Set limit

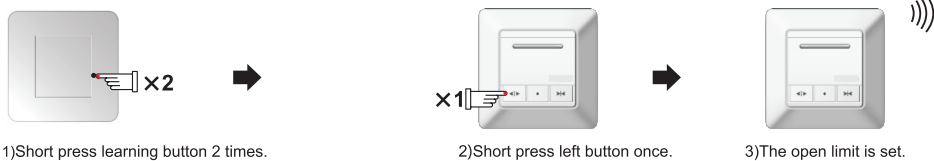
①Automatically set limit

Under the condition of no limit, when the motor first stops for obstacle, it will automatically set open and close limit.

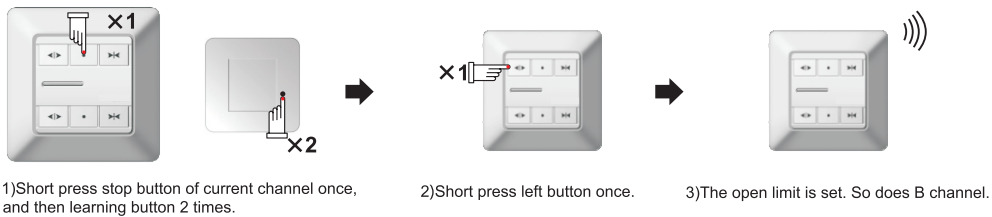
②Set limit by emitter

I.Set open limit

a.Single channel emitter (WSRE204)



b.Double channel emitter (WSRE206)

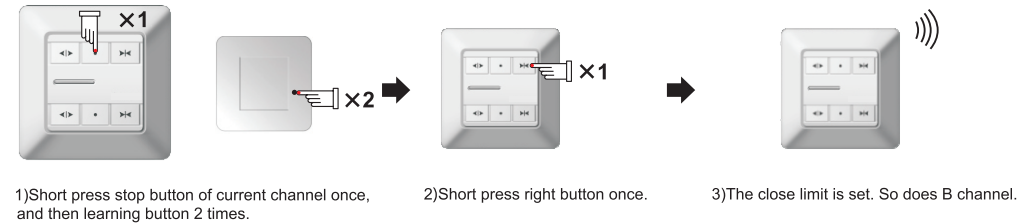


II Set close limit

a.Single channel emitter (WSRE204)



b.Double channel emitter (WSRE206)

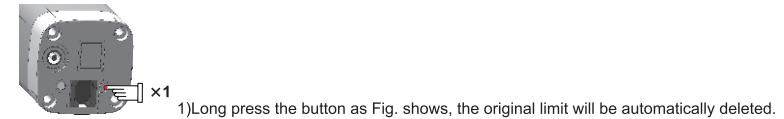


10.Delete limit

①Automatically delete limit

Under the condition of limit, if the motor encounters obstacles during operation process, the original limit will be automatically deleted. When blocks again, it will reset the limit.

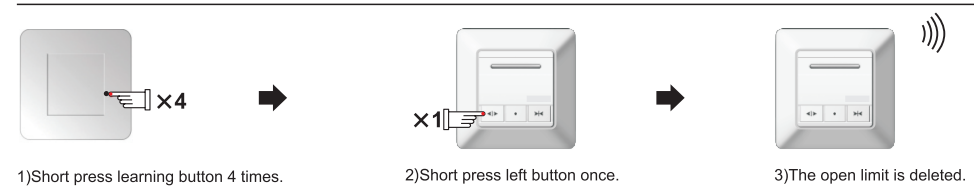
②.Delete limit by button



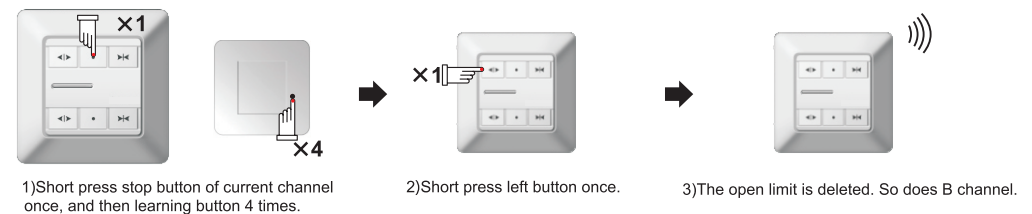
③.Delete limit by emitter

I Delete open limit

a.Single channel emitter (WSRE204)

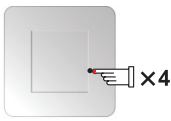


b.Double channel emitter (WSRE206)




II Delete close limit


a. Single channel emitter (WSRE204)



1) Short press learning button 4 times.




2) Short press right button once.

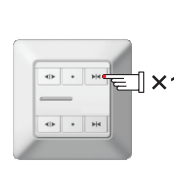


3) The close limit is deleted.


b. Double channel emitter (WSRE206)



1) Short press stop button of current channel once, and then learning button 4 times.



2) Short press right button once.



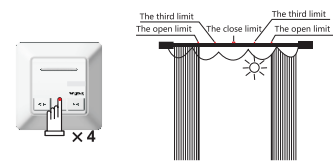
3) The close limit is deleted. So does B channel.

Note: When the motor stops, you can use stop button to control the power light on or off.

11. The third limit

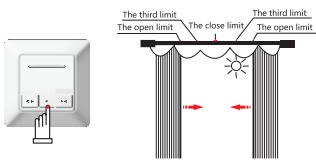
a. Set the third limit (WSRE204)

Short press stop button of emitter 4 times, the motor will vibrate, the third limit is set.



b. Operate the third limit (WSRE204)

Long press stop button of emitter, curtain will operate to the third limit.



c. Delete the third limit

When delete limit, the third limit will also be deleted.

1). Manual switch function

When the motor stops, connect 1 and 4, the first time, the motor opens or closes; disconnect and connect second time, the motor stops; disconnect and connect third time, motor opens or closes; circulation in turn. Connect 1 and 3, the first time, the motor opens or closes; disconnect and connect second time, the motor stops; disconnect and connect third time, motor opens or close.

13. Common faults and ruled out

No.	Faults	Reasons	Ruled out methods
1	Power on, the motor does not work or operate unstably and slowly.	A: Overload. B: Improper installation. C: low voltage.	A: Change large torque motor. B: Check connection of all parts. C: Adjust voltage AC200~260V/50Hz (100V~260V/60Hz).
2	Motor fails to fully match up the under cover of rail.	Output end of the motor is not in vertical with transfer box.	Slight pull curtain.

Note: The voltage in parentheses is voltage configuration data for AC 110V.

14. APP connection instructions

Scan the below QR codes to download Smart Life/ Nayun Smart App, register and find the next steps.



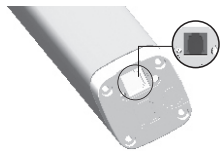
Smart Life



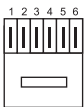
Nayun Smart

12. Optional function

RJ 11 interface drawing

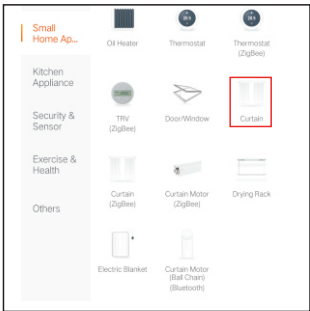


Insert crystal plug into motor.

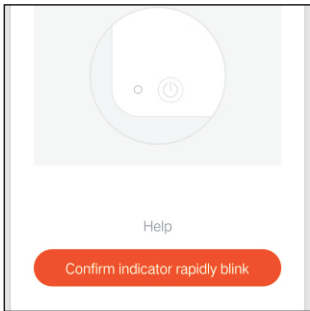


Type: RJ11

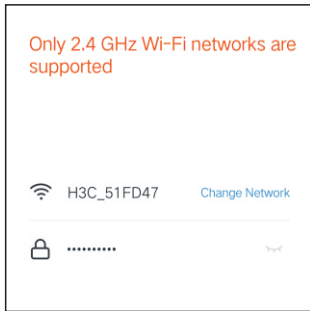
- 1. OPEN
- 2. COM
- 3. CLOSE
- 4. GND
- 5. /
- 6. /



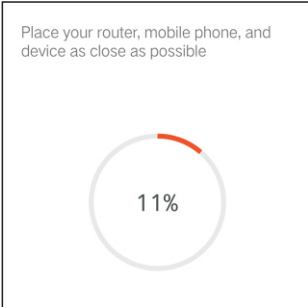
1. Click "Small Home Appliances" and then swipe up the icons on the right, to find the "Curtain" icon and click



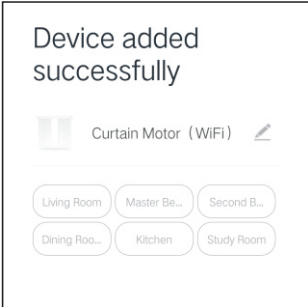
2. Power on the motor first, then press "SET" key selected in the frame for 4 times, the motor jogs once, the indicator flashes continuously, and then click "confirm indicator rapidly blink" on the APP



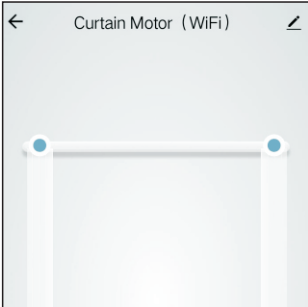
3. Enter the network name and password, and click "confirm"



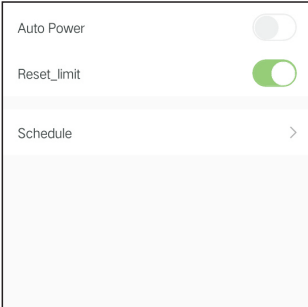
4.connecting



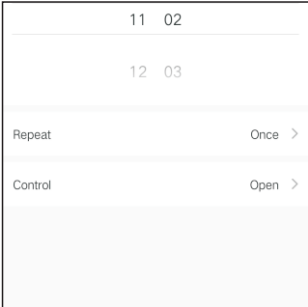
5. Device added successfully, click "Done"



6. Enter the curtain operation interface

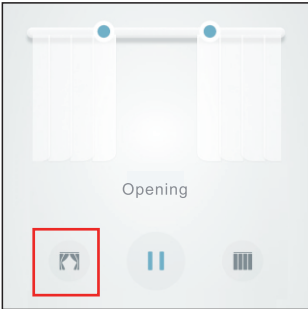


reset limits

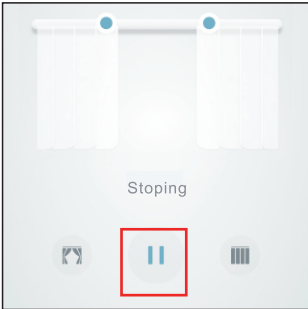


timer

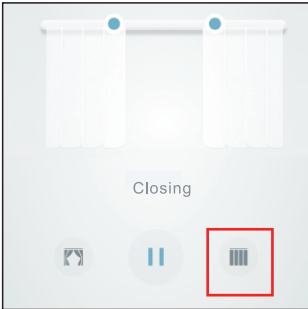
15.app functions



1. Open

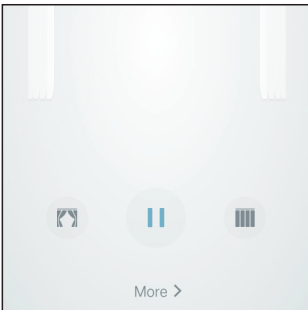


2. Pause

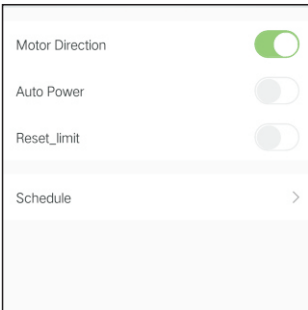


3. Close

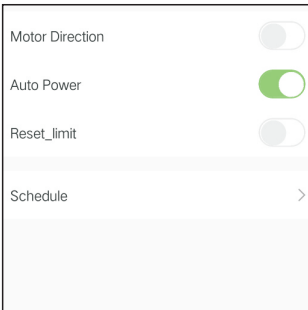
16.More



Click "More" to select functions

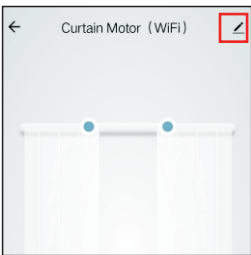


opposite direction

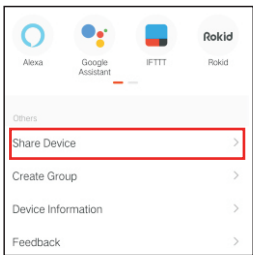


auto-on/off

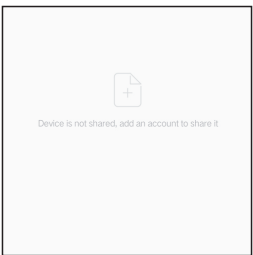
share device



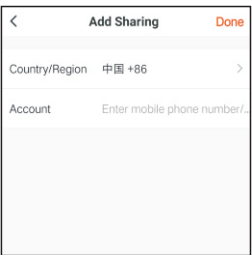
1.click set



2.click share device



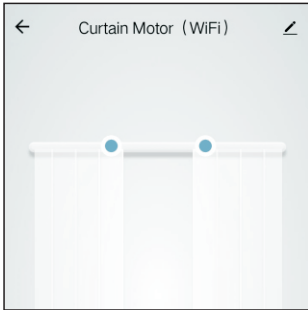
3.click add sharing



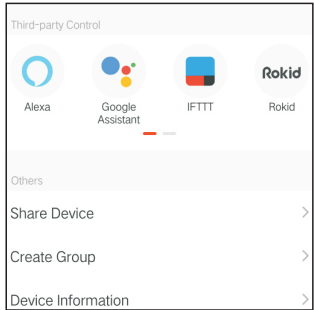
4. Make sure that the shared phone has downloaded and registered "Nayun Smart/Smart Life" APP, edit the phone number, and complete the sharing

voice control function

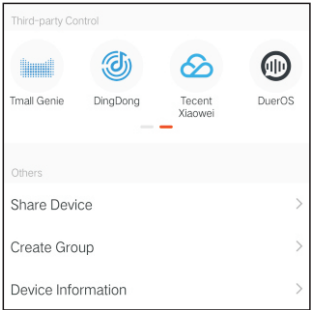
The device supports third-party voice control, details can be connected by the following actions (click on the corresponding third-party voice system icon to connect the device to the network)



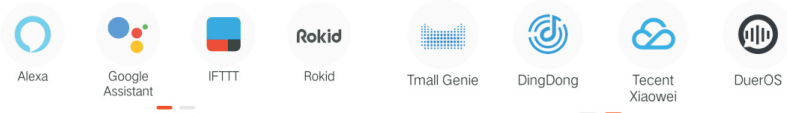
Click on the icon selected in the frame



Swipe left and right for interface switching



Below are all supported third-party voice system icons



Safety Information

Motor operating conditions

1.1 Environmental conditions:

A) Altitude: no more than 1000 m. When the altitude of the operating site exceeds 1000 m or the ambient air temperature of the operating site decreases with the increase of altitude, the limit value of temperature rise of the motor shall be modified in accordance with GB 755.

B) Ambient temperature: $-20^{\circ}\text{C} \sim +55^{\circ}\text{C}$.

C) Environmental humidity: the average maximum air relative humidity in the wettest month of the operating place is 80% RH, and the average minimum temperature in that month is no higher than 25°C .

D) In case of any dispute over the test results, the test of temperature $25\pm 2^{\circ}\text{C}$ and relative humidity $65\pm 5\%$ shall prevail.

Motor storage conditions

The motor shall be stored in the warehouse with ambient air temperature of $-25^{\circ}\text{C} \sim 60^{\circ}\text{C}$, relative humidity of no more than 90%RH, cleaning and good ventilation. It is strictly prohibited to store with strong magnetic objects, and corrosive gases shall not be contained in the air.

Maintenance and precautions

1. Power can be switched on after correct installation as required. No reverse connection, serial connection or short connection is allowed;
2. The motor shall not be blocked in the current running state;
3. In the process of transportation and use, collision, wrestling, knocking and other situations should be avoided, and external impact force on the motor output shaft and bearing should not be exerted;
4. When replacing the motor, it should be prevented from falling, and no more than 50N force should be applied on the shell;
5. The motor shall not be used in corrosive environment or places with inflammable and explosive materials;
6. The motor shall not be disassembled or replaced by non-professionals of the company, and shall not be reassembled for use after disassembling.

The motor shall not be disassembled under the state of electrification;



Не выбрасывайте батарейки вместе с обычным бытовым мусором. Содержащиеся в них опасные вещества могут повредить здоровью или окружающей среде. Сдайте батарейки или отслужившие изделия обратно производителю или воспользуйтесь услугами служб сбора опасного мусора в вашем городе.

EAC