

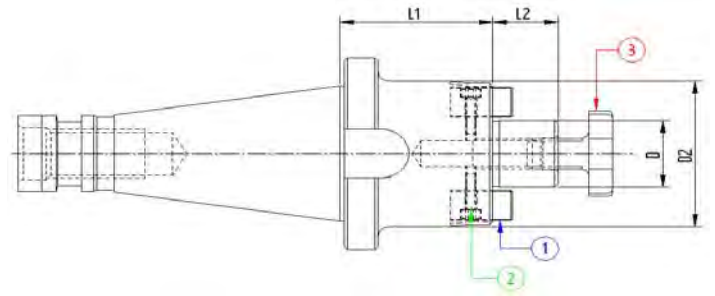
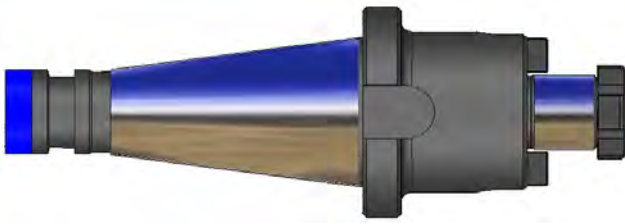


MANDRINI PORTAFRESA TRASCINAMENTO FISSO AD+B
 FACE MILL HOLDERS-TENONS DRIVE WITH INTERNAL COOLANT- SHORT
 MANDRINS PORTE-FRAISE-ENTRAINEMENT PAR TENONS AVEC ARROSAGE INTERNE
 AUFSTECKFRAESDORNE FÜR FRAESER MIT QUERNUT UND KUEHLMITTELZUFUHR



DIN2080

ISO3937

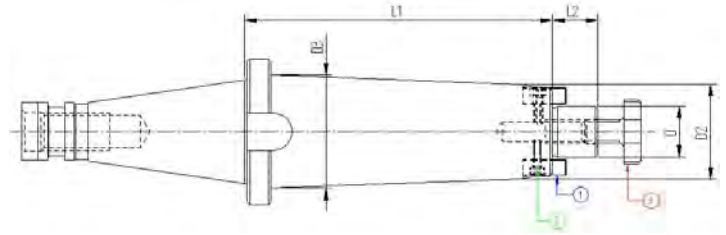
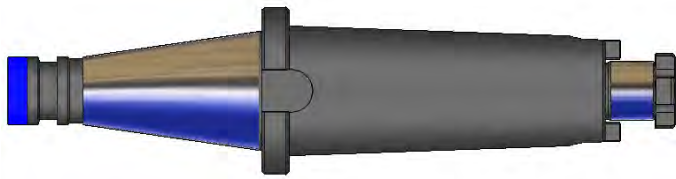


Codice	ISO	Descrizione	D	L1	D2	L2
540PF116	40	ISO40 DIN2080 P/F FISSO H45 D16	16	45	38	17
540PF122	40	ISO40 DIN2080 P/F FISSO H45 D22	22	45	48	19
540PF127	40	ISO40 DIN2080 P/F FISSO H45 D27	27	45	58	21
540PF132	40	ISO40 DIN2080 P/F FISSO H50 D32	32	50	78	24
540PF140	40	ISO40 DIN2080 P/F FISSO H55 D40	40	55	88	27
550PF116	50	ISO50 DIN2080 P/F FISSO H45 D16	16	45	38	17
550PF122	50	ISO50 DIN2080 P/F FISSO H45 D22	22	45	48	19
550PF127	50	ISO50 DIN2080 P/F FISSO H45 D27	27	45	58	21
550PF132	50	ISO50 DIN2080 P/F FISSO H50 D32	32	50	78	24
550PF140	50	ISO50 DIN2080 P/F FISSO H50 D40	40	50	88	27

----- Secondo fattibilità, fornibili su richiesta con cono ISO 30 -----

COMPONENTI - SPARE PARTS - PIECES DETACHEES - ERSATZTEILE

Tipo Cono	Ø	TASSELLO	Q.tà	VITE TASSELLO	Q.tà	VITE A CROCE	Q.tà
ISO 40 - 50	16	916TSL01	2	110301001	2	916VTC02	1
	22	922TSL01	2	110301201	2	922VTC02	1
	27	927TSL01	2	110401601	2	927VTC02	1
	32	932TSL01	2	110601601	2	932VTC02	1
	40	940TSL01	2	110601601	2	940VTC02	1



L=100

Codice	ISO	Descrizione	D	L1	D2	L2	D3
540PF216	40	ISO40 DIN2080 P/F FISSO H100 D.16	16	100	38	17	38
540PF222	40	ISO40 DIN2080 P/F FISSO H100 D.22	22	100	48	19	48
540PF227	40	ISO40 DIN2080 P/F FISSO H100 D.27	27	100	58	21	58
540PF232	40	ISO40 DIN2080 P/F FISSO H100 D.32	32	100	63	24	61
540PF240	40	ISO40 DIN2080 P/F FISSO H100 D.40	40	100	80	27	45
550PF216	50	ISO50 DIN2080 P/F FISSO H100 D.16	16	100	38	17	42
550PF222	50	ISO50 DIN2080 P/F FISSO H100 D.22	22	100	48	19	53
550PF227	50	ISO50 DIN2080 P/F FISSO H100 D.27	27	100	58	21	58
550PF232	50	ISO50 DIN2080 P/F FISSO H100 D.32	32	100	66	24	66
550PF240	50	ISO50 DIN2080 P/F FISSO H100 D.40	40	100	80	27	70

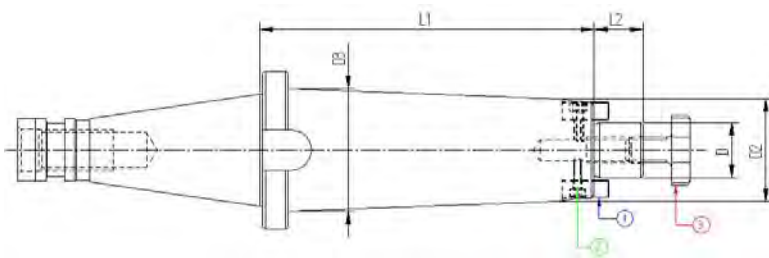
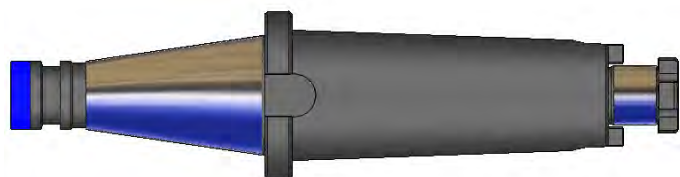
L=130

Codice	ISO	Descrizione	D	L1	D2	L2	D3
540PF316	40	ISO40 DIN2080 P/F FISSO H130 D.16	16	130	38	17	38
540PF322	40	ISO40 DIN2080 P/F FISSO H130 D.22	22	130	48	19	48
540PF327	40	ISO40 DIN2080 P/F FISSO H130 D.27	27	130	58	21	58
540PF332	40	ISO40 DIN2080 P/F FISSO H130 D.32	32	130	66	24	45
540PF340	40	ISO40 DIN2080 P/F FISSO H130 D.40	40	130	80	27	45
550PF316	50	ISO50 DIN2080 P/F FISSO H130 D.16	16	130	38	17	45
550PF322	50	ISO50 DIN2080 P/F FISSO H130 D.22	22	130	48	19	48
550PF327	50	ISO50 DIN2080 P/F FISSO H130 D.27	27	130	58	21	58
550PF332	50	ISO50 DIN2080 P/F FISSO H130 D.32	32	130	66	24	66
550PF340	50	ISO50 DIN2080 P/F FISSO H130 D.40	40	130	80	27	80

----- Secondo fattibilità, fornibili su richiesta con cono ISO 30 -----

COMPONENTI - SPARE PARTS - PIECES DETACHEES - ERSATZTEILE

Tipo Cono	Ø	TASSELLO	Q.tà	VITE TASSELLO	Q.tà	VITE A CROCE	Q.tà
ISO 40 - 50	16	916TSL01	2	110301001	2	916VTC02	1
	22	922TSL01	2	110301201	2	922VTC02	1
	27	927TSL01	2	110401601	2	927VTC02	1
	32	932TSL01	2	110601601	2	932VTC02	1
	40	940TSL01	2	110601601	2	940VTC02	1



L=160

Codice	ISO	Descrizione	D	L1	D2	L2	D3
540PF416	40	ISO40 DIN2080 P/F FISSO H160 D.16	16	160	38	17	38
540PF422	40	ISO40 DIN2080 P/F FISSO H160 D.22	22	160	48	19	48
540PF427	40	ISO40 DIN2080 P/F FISSO H160 D.27	27	160	58	21	58
540PF432	40	ISO40 DIN2080 P/F FISSO H160 D.32	32	160	66	24	45
540PF440	40	ISO40 DIN2080 P/F FISSO H160 D.40	40	160	80	27	45
550PF416	50	ISO50 DIN2080 P/F FISSO H160 D.16	16	160	38	17	47
550PF422	50	ISO50 DIN2080 P/F FISSO H160 D.22	22	160	48	19	57
550PF427	50	ISO50 DIN2080 P/F FISSO H160 D.27	27	160	58	21	58
550PF432	50	ISO50 DIN2080 P/F FISSO H160 D.32	32	160	66	24	66
550PF440	50	ISO50 DIN2080 P/F FISSO H160 D.40	40	160	80	27	70

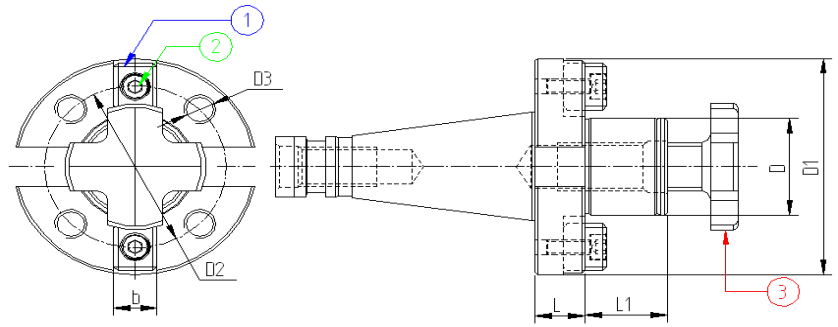
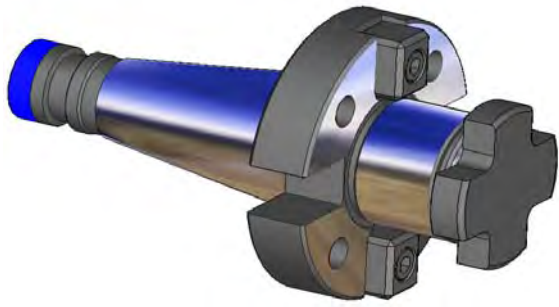
L=200

Codice	ISO	Descrizione	D	L1	D2	L2	D3
540PF516	40	ISO40 DIN2080 P/F FISSO H200 D.16	16	200	38	17	38
540PF522	40	ISO40 DIN2080 P/F FISSO H200 D.22	22	200	48	19	48
540PF527	40	ISO40 DIN2080 P/F FISSO H200 D.27	27	200	58	21	58
540PF532	40	ISO40 DIN2080 P/F FISSO H200 D.32	32	200	66	24	45
540PF540	40	ISO40 DIN2080 P/F FISSO H200 D.40	40	200	80	27	45
550PF516	50	ISO50 DIN2080 P/F FISSO H200 D.16	16	200	38	17	48
550PF522	50	ISO50 DIN2080 P/F FISSO H200 D.22	22	200	48	19	64
550PF527	50	ISO50 DIN2080 P/F FISSO H200 D.27	27	200	58	21	58
550PF532	50	ISO50 DIN2080 P/F FISSO H200 D.32	32	200	66	24	66
550PF540	50	ISO50 DIN2080 P/F FISSO H200 D.40	40	200	80	27	70

----- Secondo fattibilità, fornibili su richiesta con cono ISO 30 -----

COMPONENTI - SPARE PARTS - PIECES DETACHEES - ERSATZTEILE

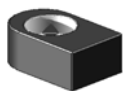


Tipo Cono	Ø	TASSELLO	Q.tà	VITE TASSELLO	Q.tà	VITE A CROCE	Q.tà
ISO 40 - 50	16	916TSL01	2	110301001	2	916VTC02	1
	22	922TSL01	2	110301201	2	922VTC02	1
	27	927TSL01	2	110401601	2	927VTC02	1
	32	932TSL01	2	110601601	2	932VTC02	1
	40	940TSL01	2	110601601	2	940VTC02	1

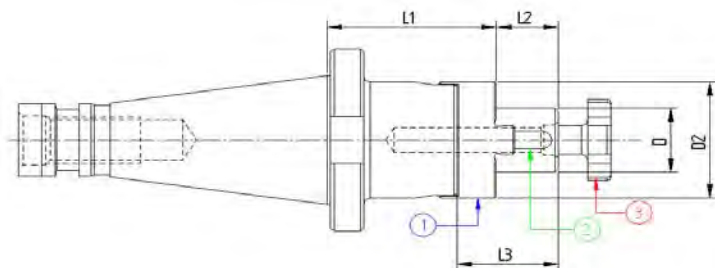
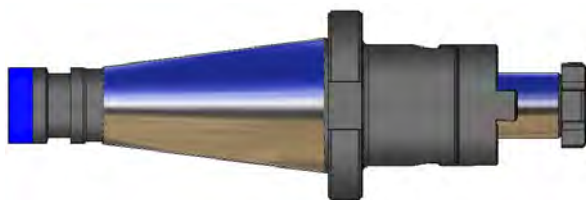


Codice	ISO	Descrizione	D	L	L1	D1	D2	D3	b
540PI140	40	ISO40 DIN2080 P/F TRA. FR. H20 D40	40	20	30	89	66,7	M12	15,9
550PI140	50	ISO50 DIN2080 P/F TRA. FR. H30 D40	40	30	30	89	66,7	M12	15,9
550PI160	50	ISO50 DIN2080 P/F TRA. FR. H30 D60	60	30	40	129	102	M16	25,4

----- Secondo fattibilità, fornibili su richiesta con cono ISO 30 -----

COMPONENTI - SPARE PARTS - PIECES DETACHEES - ERSATZTEILE

Tipo Cono	Ø	TASSELLO	Q.tà	VITE TASSELLO	Q.tà	VITE A CROCE	Q.tà
							
ISO 40 - 50	40	940TSL04	2	110601601	2	940VTC02	1
ISO 50	60	960TSL04	2	111202501	2	NON FORNITA	-

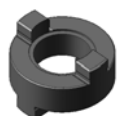


Codice	ISO	Descrizione	D	L1	L2	L3	D2
540PU116	40	ISO40 DIN2080 P/F UNIV.H52 D.16	16	52	17	27	32
540PU122	40	ISO40 DIN2080 P/F UNIV.H52 D.22	22	52	19	31	40
540PU127	40	ISO40 DIN2080 P/F UNIV.H52 D.27	27	52	21	33	48
540PU132	40	ISO40 DIN2080 P/F UNIV.H52 D.32	32	52	24	38	58
540PU140	40	ISO40 DIN2080 P/F UNIV.H52 D.40	40	52	27	41	70
550PU116	50	ISO50 DIN2080 P/F UNIV.H55 D.16	16	55	17	27	32
550PU122	50	ISO50 DIN2080 P/F UNIV.H55 D.22	22	55	19	31	40
550PU127	50	ISO50 DIN2080 P/F UNIV.H55 D.27	27	55	21	33	48
550PU132	50	ISO50 DIN2080 P/F UNIV.H55 D.32	32	55	24	38	58
550PU140	50	ISO50 DIN2080 P/F UNIV.H55 D.40	40	55	27	41	70

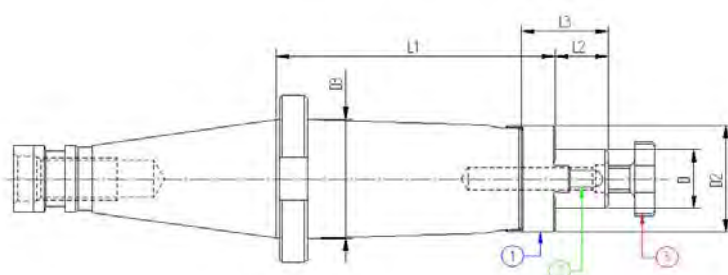
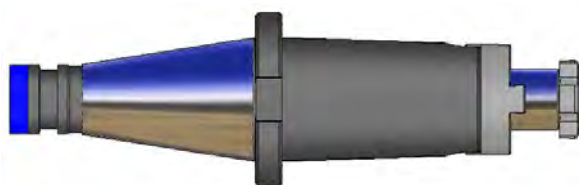
----- Secondo fattibilità, fornibili su richiesta con cono ISO 30 -----

COMPONENTI - SPARE PARTS - PIECES DETACHEES - ERSATZTEILE

Tipo Cono
 Ø
 GIUNTO
 Q.tà
 LINGUETTA
 Q.tà
 VITE A CROCE
 Q.tà



ISO 40 - 50	16	916GNT01	1	170402004	1	916VTC02	1
	22	922GNT01	1	170602506	1	922VTC02	1
	27	927GNT01	1	170702507	1	927VTC02	1
	32	932GNT01	1	170802807	1	932VTC02	1
	40	940GNT01	1	171003208	1	940VTC02	1



L=100

Codice	ISO	Descrizione	D	L1	L2	L3	D2	D3
540PU216	40	ISO40 DIN2080 P/F UNIV.H100 D.16	16	100	17	27	32	40
540PU222	40	ISO40 DIN2080 P/F UNIV.H100 D.22	22	100	19	31	40	44
540PU227	40	ISO40 DIN2080 P/F UNIV.H100 D.27	27	100	21	33	48	-
540PU232	40	ISO40 DIN2080 P/F UNIV.H100 D.32	32	100	24	38	58	-
540PU240	40	ISO40 DIN2080 P/F UNIV.H100 D.40	40	100	27	41	70	-
550PU216	50	ISO50 DIN2080 P/F UNIV.H100 D.16	16	100	17	27	32	50
550PU222	50	ISO50 DIN2080 P/F UNIV.H100 D.22	22	100	19	31	40	60
550PU227	50	ISO50 DIN2080 P/F UNIV.H100 D.27	27	100	21	33	48	60
550PU232	50	ISO50 DIN2080 P/F UNIV.H100 D.32	32	100	24	38	58	-
550PU240	50	ISO50 DIN2080 P/F UNIV.H100 D.40	40	100	27	41	70	-

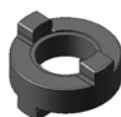
L=130

Codice	ISO	Descrizione	D	L1	L2	L3	D2	D3
540PU316	40	ISO40 DIN2080 P/F UNIV.H130 D.16	16	130	17	27	32	-
540PU322	40	ISO40 DIN2080 P/F UNIV.H130 D.22	22	130	19	31	40	-
540PU327	40	ISO40 DIN2080 P/F UNIV.H130 D.27	27	130	21	33	48	-
540PU332	40	ISO40 DIN2080 P/F UNIV.H130 D.32	32	130	24	38	58	-
540PU340	40	ISO40 DIN2080 P/F UNIV.H130 D.40	40	130	27	41	70	-
550PU316	50	ISO50 DIN2080 P/F UNIV.H130 D.16	16	130	17	27	32	-
550PU322	50	ISO50 DIN2080 P/F UNIV.H130 D.22	22	130	19	31	40	-
550PU327	50	ISO50 DIN2080 P/F UNIV.H130 D.27	27	130	21	33	48	-
550PU332	50	ISO50 DIN2080 P/F UNIV.H130 D.32	32	130	24	38	58	-
550PU340	50	ISO50 DIN2080 P/F UNIV.H130 D.40	40	130	27	41	70	-

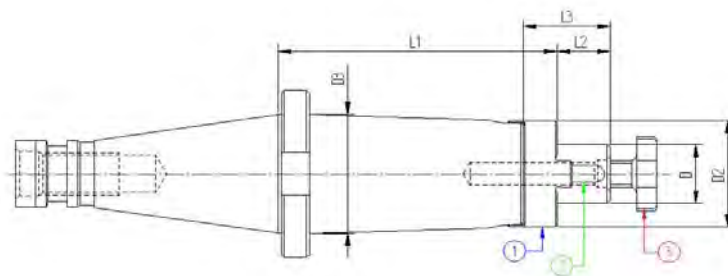
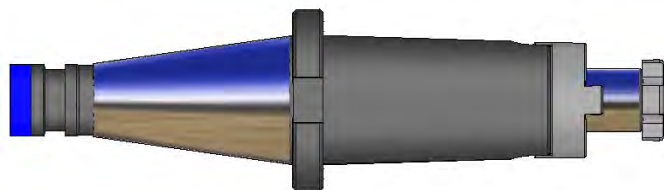
----- Secondo fattibilità, fornibili su richiesta con cono ISO 30 -----

COMPONENTI - SPARE PARTS - PIECES DETACHEES - ERSATZTEILE

Tipo Cono Ø GIUNTO Q.tà LINGUETTA Q.tà VITE A CROCE Q.tà



ISO 40 - 50	Ø	GIUNTO	Q.tà	LINGUETTA	Q.tà	VITE A CROCE	Q.tà
	16	916GNT01	1	170402004	1	916VTC02	1
	22	922GNT01	1	170602506	1	922VTC02	1
	27	927GNT01	1	170702507	1	927VTC02	1
	32	932GNT01	1	170802807	1	932VTC02	1
	40	940GNT01	1	171003208	1	940VTC02	1



L=160

Codice	ISO	Descrizione	D	L1	L2	L3	D2	D3
540PU416	40	ISO40 DIN2080 P/F UNIV.H160 D.16	16	160	17	27	32	-
540PU422	40	ISO40 DIN2080 P/F UNIV.H160 D.22	22	160	19	31	40	-
540PU427	40	ISO40 DIN2080 P/F UNIV.H160 D.27	27	160	21	33	48	-
540PU432	40	ISO40 DIN2080 P/F UNIV.H160 D.32	32	160	24	38	58	-
540PU440	40	ISO40 DIN2080 P/F UNIV.H160 D.40	40	160	27	41	70	-
550PU416	50	ISO50 DIN2080 P/F UNIV.H160 D.16	16	160	17	27	32	-
550PU422	50	ISO50 DIN2080 P/F UNIV.H160 D.22	22	160	19	31	40	-
550PU427	50	ISO50 DIN2080 P/F UNIV.H160 D.27	27	160	21	33	48	-
550PU432	50	ISO50 DIN2080 P/F UNIV.H160 D.32	32	160	24	38	58	-
550PU440	50	ISO50 DIN2080 P/F UNIV.H160 D.40	40	160	27	41	70	-

L=200

Codice	ISO	Descrizione	D	L1	L2	L3	D2	D3
540PU516	40	ISO40 DIN2080 P/F UNIV.H200 D.16	16	200	17	27	32	42
540PU522	40	ISO40 DIN2080 P/F UNIV.H200 D.22	22	200	19	31	40	-
540PU527	40	ISO40 DIN2080 P/F UNIV.H200 D.27	27	200	21	33	48	-
540PU532	40	ISO40 DIN2080 P/F UNIV.H200 D.32	32	200	24	38	58	-
540PU540	40	ISO40 DIN2080 P/F UNIV.H200 D.40	40	200	27	41	70	-
550PU516	50	ISO50 DIN2080 P/F UNIV.H200 D.16	16	200	17	27	32	45
550PU522	50	ISO50 DIN2080 P/F UNIV.H200 D.22	22	200	19	31	40	52
550PU527	50	ISO50 DIN2080 P/F UNIV.H200 D.27	27	200	21	33	48	60
550PU532	50	ISO50 DIN2080 P/F UNIV.H200 D.32	32	200	24	38	58	70
550PU540	50	ISO50 DIN2080 P/F UNIV.H200 D.40	40	200	27	41	70	-

----- Secondo fattibilità, fornibili su richiesta con cono ISO 30 -----

COMPONENTI - SPARE PARTS - PIECES DETACHEES - ERSATZTEILE

Tipo Cono	Ø	GIUNTO	Q.tà	LINGUETTA	Q.tà	VITE A CROCE	Q.tà
ISO 40 - 50	16	916GNT01	1	170402004	1	916VTC02	1
	22	922GNT01	1	170602506	1	922VTC02	1
	27	927GNT01	1	170702507	1	927VTC02	1
	32	932GNT01	1	170802807	1	932VTC02	1
	40	940GNT01	1	171003208	1	940VTC02	1