



NMO

UK/0126/0114

MI-008

EC type-examination certificate UK/0126/0114 Revision 5

Issued by

NMO

Notified Body Number 0126

In accordance with the requirements of Council Directive 2014/32/EU, this EU-type examination certificate has been issued to:

HASSAN İNŞ.MAK.SAN.TİC.LTD.ŞTİ.

Kaynarca Mah.Diyar Sk.No:7

Pendik

Istanbul

TURKEY

In respect of: Material measure of length
Accuracy class: II
Nominal length and width: 3 m x 16 mm

The necessary data (principal characteristics, alterations, securing, functioning etc) for identification purposes, including alternative models and conditions (when applicable), are set out in the descriptive annex to this certificate.

This revision replaces previous versions of the certificate.

Issue Date: 19th August 2016
Valid Until: 20th December 2021
Reference No: TS1002/0006

Marek Bokota
Technical Manager

For and on behalf of the Head of Certification Body

NMO | Stanton Avenue | Teddington | TW11 0JZ | United Kingdom
Tel +44 (0) 20 8943 7272 | Fax +44 (0) 20 8943 7270 | Web www.gov.uk/government/organisations/regulatory-delivery
NMO is part of the Regulatory Delivery directorate within the Department for Business, Energy & Industrial Strategy



0135

Descriptive Annex

1 REGULATIONS

The measuring instrument in respect of which this EU type examination certificate has been issued is subject to the provisions and requirements of the requirements of Council Directive 2014/32/EU.

2 DESCRIPTION OF THE PATTERN

The pattern is a composite, retractable measure, which may be in a case. The blade is 3 m long with a nominal width of 16 mm, and is made of steel. The tape blade has a sliding hook at the free end. It has black markings on a white background protected by a clear film. The blade is graduated in millimetres throughout on both edges; half-centimetres are also marked. The centimetre intervals are numbered consecutively throughout the blade. The numbers are marked in red every 10 centimetres. The case may be any colour.

3 TECHNICAL DATA

- 3.1**
- | | | |
|-----|-----------------|------|
| (a) | Accuracy class: | II |
| (b) | Nominal length: | 3 m |
| (c) | Scale interval: | 1 mm |

4 INSCRIPTIONS

The following inscriptions are marked at the beginning of the blade:

- | | | |
|-----|--------------------------------------|---------------|
| (a) | Nominal length: | 3 m |
| (b) | Manufacturer's identification: | dekor® |
| (c) | Class of accuracy: | II |
| (d) | EC type approval certificate number: | UK 0126 0114 |

5 APPROVAL CONDITIONS

The certificate is issued subject to the following conditions.

5.1 Legends and inscriptions

5.1.1 The following markings and inscriptions legends are durably and legibly marked onto the blade of the tape measure, and fulfil the requirements of Annex I Paragraph 9 of Directive 2014/32/EU:

- 'CE' mark
- Supplementary metrology mark
- Notified Body number
- Accuracy class
- Manufacturers trade mark or name and postal address
- Certificate number
- Tractive force (if applicable)
- Reference temperature (if other than 20°C)

6 LOCATION OF MARKS

6.1 The inscriptions detailed in section 4 together with the 'CE' marking, supplementary metrology marking and notified body number are printed on the blade near the beginning.

7 ALTERNATIVES

7.1 Having alternative models of steel tape measure blade as described in Table 1 below.

Accuracy class	Nominal length (m)	Nominal widths (mm)
II	5	19
II	5	25
II	8	25
II	10	25

Table 1

7.1.1 The blade is enclosed in a case which is marked with a case dimension for making internal measurements, as identified in Table 2 below.

Model ID	Tape blade (L x W)	Case dimension marking
294	3m x 16mm	+62mm
295	5m x 19mm	+72mm
296	5m x 25mm	+72mm
297	8m x 25mm	+84mm
298	10m x 25mm	+84mm
304	3m x 16mm	+62mm
305	5m x 19mm	+72mm
306	5m x 25mm	+72mm
307	8m x 25mm	+84mm
309	10m x 25mm	+84mm
406	3m x 16mm	+62mm
407	5m x 19mm	+72mm
408	5m x 25mm	+72mm
409	8m x 25mm	+84mm
426	10m x 25mm	+84mm

Table 2

7.1.2 The case which may be any colour including "clear", may be fitted with any of the following:

- blade lock
- belt clip

7.2 Having alternative models of steel tape measure blade as described in Table 3 below.

Model ID	Tape blade (L x W)	Case dimension marking
436	3m x 16mm	+62mm
437	5m x 19mm	+72mm
438	5m x 25mm	+72mm
439	8m x 25mm	+84mm

Table 3

7.2.1 The tape blades are dual marked, with Metric graduations along the bottom edge, and Imperial graduations along the top edge. The tape blades have black markings on a silver background protected by a clear film. The blade is graduated in millimetres throughout on both edges; half-centimetres are also marked. The centimetre intervals are numbered consecutively throughout the blade. The numbers are marked in red every 10 centimetres. The case may be any colour. The Imperial graduations are not included under this certification.

7.3 Having alternative models of steel tape measure blade as described in Table 4 below.

Model ID	Tape blade (L x W)
850	3m x 16mm
851	5m x 19mm
852	5m x 25mm
853	8m x 25mm
854	10m x 25mm
855	3m x 16mm
856	5m x 19mm
857	5m x 25mm
858	8m x 25mm
859	10m x 25mm

Table 4

7.3.1 The cases which do not have case dimension markings, and may be fitted with any of the following:

- blade lock
- belt clip

7.4 Having alternative models of steel tape measure blade as described in Table 5 below.

Model ID	Tape blade (L x W)
416	3m x 16mm
417	5m x 19mm
418	5m x 25mm
419	8m x 25mm

Table 5

7.4.1 The tape blades are dual marked, with Metric graduations on both the front and rear faces. The tape blades have black markings on a silver background protected by a clear film. The blade is graduated in millimetres throughout on both edges; half-centimetres are also marked. The centimetre intervals are numbered consecutively throughout the blade. The numbers are marked in red every 10 centimetres.

7.4.2 The case, which may be any colour including “clear”, may be fitted with any of the following:

- blade lock
- belt clip

7.5 Having alternative models of steel tape measure blade as described in Table 6 below. The hook is magnetic, and includes a graduated scale (Figure7). This graduated scale is not covered by this certificate.

Model ID	Tape blade (L x W)
816	3m x 16mm
817	5m x 19mm
818	5m x 25mm
819	8m x 25mm
820	10m x 25mm

Table 6

8

ILLUSTRATIONS

- Figure 1 Example of the tape blade and markings
- Figure 2 Examples of the case styles
- Figure 3 Example of the dual marked tape blade
- Figure 4 Example of alternative case styles
- Figure 5 Example of alternative case style
- Figure 6 Example of graduation markings on rear face (7.4)
- Figure 7 Example of magnetic, graduated hook (7.5)

ISSUE NO.	DATE	DESCRIPTION
UK/0126/0114	21 December 2011	Type examination certificate first issued.
UK/0126/0114 Revision 1	30 April 2014	Revision 1 issued. Addition of extra model numbers (406,407,408 and 409) in Table 2.
UK/0126/0114 Revision 2	22 July 2015	Revision 2 issued. Addition of: <ul style="list-style-type: none"> • 10m x 25mm in section 7.1 • section 7.2 • section 7.3.
UK/0126/0114 Revision 3	02 September 2015	Revision 3 issued. Addition of: <ul style="list-style-type: none"> • Model IDs: 298, 309 and 426 in Table 2 – section 7.1.1 • Model IDs: 850, 854 and 855 in Table 4 – section 7.3. • which may be any colour including “clear”, in section 7.1.2.
UK/0126/0114 Revision 4	26 November 2015	Revision 4 issued. Addition of: Section 7.4, for the following models of HELIX stainless, dual marked (Metric graduations on front and rear face), tape blades: <ul style="list-style-type: none"> • 416 - 3 m x 16 mm • 417 - 5 m x 19 mm • 418 - 5 m x 25 mm • 419 - 8 m x 25 mm Figures 5 and 6
UK/0126/0114 Revision 5	19 August 2016	Revision 5 issued: References to 2004/22/EC changed to 2014/32/EU, UK Regulations deleted from section 1. Manufacturer’s postal address to section 5.1.1 Addition of section 7.5



Figure 1 Example of the tape blade and markings



Figure 2 Examples of the case style



Figure 3 Example of the dual marked tape blade



Figure 4 **Examples of alternative case styles**



Figure 5 **Example of alternative case style**

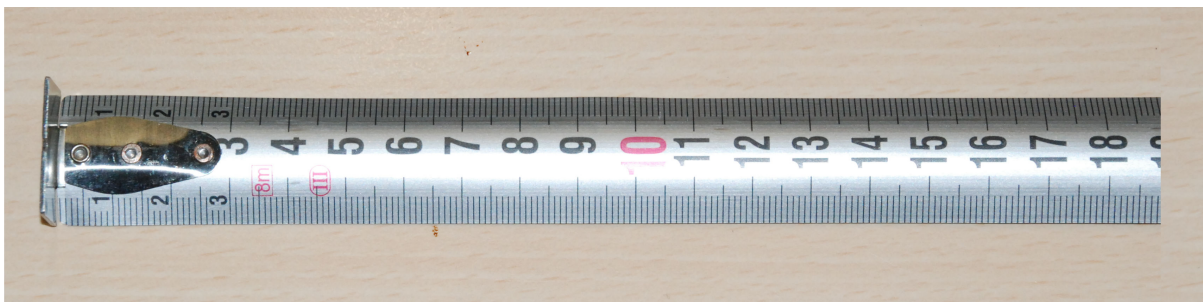


Figure 6 **Example of graduation markings on rear face (7.4)**



Figure 7 **Example of magnetic, graduated hook (7.5)**