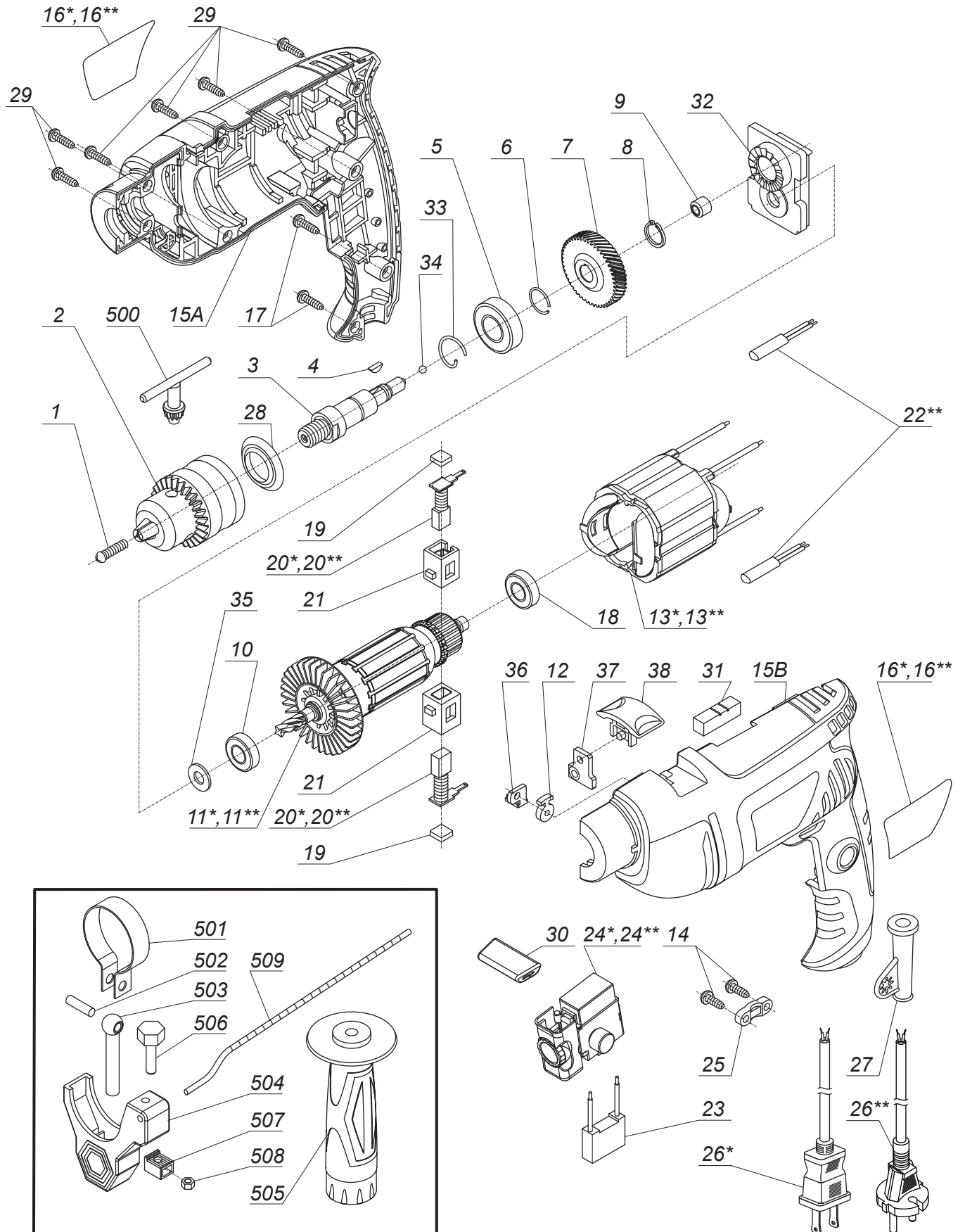
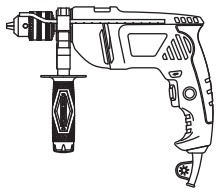


SBM-600



* - 127 V
 ** - 230 V

PRICE LIST OF SPARE PARTS

Pos.	Part Number	Description (Q-ty)	Description National Language (Q-ty)	Price, USD
1	S-170	Screw M6x22L		
2	Q-051	Chuck 13 mm		
3	K-051	Spindle		
4	R-014	Key 3x3.7x10		
5	O-010	Ball bearing 6002.2RS		
6	S-124	Snap ring Ø15		
7	F-023	Big gear		
8	S-094	Circlip for shaft Ø10		
9	O-037	Needle bearing HK0810		
10	O-002	Ball bearing 608.2RS		
11*	1A-022	Armature 127V		
11**	A-022	Armature 230V		
12	M-070	Oiling felt		
13*	1B-021	Stator 127V		
13**	B-021	Stator 230V		
14	S-074	Screw ST4x14 (2)		
15A	H-066	Housing A		
15B	H-070	Housing B		
16*	1T-049	Brand label 127V (SBM-600)		
16**	T-049	Brand label 230V (SBM-600)		
17	S-075	Screw ST4x16 (2)		
18	O-001	Ball bearing 607.2RS		
19	J-026	Brush cap (2)		
20*	1D-010	Carbon brush 127V (2)		
20**	D-010	Carbon brush 230V (2)		
21	J-018	Brush holder (2)		
22**	E-032	Inductor 10µH 230V (2)		
23**	E-005	Condenser 0.22 µF 230V		
24*	1C-014	VS switch 127V		
24**	C-014	VS switch 230V		
25	M-002	Cord clip		
26*	1E-001	Cord 127V		
26**	E-001	Cord 230V		
27	M-068	Rubber sleeve		
28	M-082	Gasket sealing		
29	S-077	Screw ST4x20 (6)		
30	I-032	Switch pole		
31	Q-038	Water level		
32	K-066	Bearing holder		
33	R-070	Spring		
34	R-002	Steel ball Ø4		
35	M-076	Sealing ring Ø16xØ8		
36	N-101	Oiling felt cover		
37	N-102	Impact washer		
38	N-105	Impact change button		
500	Q-052	Chuck key		
501	Q-046	Chuck ring		
502	L-046	Chuck ring pin		
503	S-180	Handle screw		
504	Q-007	Handle clip		
505	Q-001	Side handle		
506	S-061	Hex.head screw M6		
507	Q-017	Arresting lever fixed block		
508	S-065	Nut M6		
509	Q-022	Depth gauge		